

- 30 Waddell, P.J. *et al.* (1999) Using novel phylogenetic methods to evaluate mammalian mtDNA, including amino acid invariant sites LogDet plus site stripping, to detect internal conflicts in the data, with special reference to the positions of hedgehog, armadillo and elephant. *Syst. Biol.* 48, 31–53
- 31 Galtier, N. and Gouy, M. (1998) Inferring pattern and process: maximum likelihood implementation of a nonhomogeneous model of DNA sequence evolution for phylogenetic analysis. *Mol. Biol. Evol.* 15, 871–879
- 32 Galtier, N. and Mouchiroud, D. (1998) Isochore evolution in mammals: a human-like ancestral structure. *Genetics* 150, 1577–1584
- 33 Mouchiroud, D. *et al.* (1997) Impact of changes in GC content on the silent molecular clock in murids. *Gene* 205, 317–322
- 34 Galtier, N. *et al.* (1999) A nonhyperthermophilic common ancestor to extant life forms. *Science* 283, 220–221
- 35 Hillis, D.M. (1996) Inferring complex phylogenies. *Nature* 383, 130–131
- 36 Soltis, P.S. *et al.* (1999) Angiosperm phylogeny inferred from multiple genes as a tool for comparative biology. *Nature* 402, 402–404
- 37 Karlin, S. and Mrazek, J. (1997) Compositional differences within and between eukaryotic genomes. *Proc. Natl. Acad. Sci. U. S. A.* 94, 10227–10232
- 38 Lockhart, P.J. *et al.* (1998) A covariate model explains apparent phylogenetic structure of oxygenic photosynthetic lineages. *Mol. Biol. Evol.* 15, 1183–1188
- 39 Steel, M. *et al.* (2000) Invariable site models and their use in phylogeny reconstruction. *Syst. Biol.* 49, 225–232
- 40 Chang, B.S.W. and Campbell, D.L. Bias in phylogenetic reconstruction of vertebrate rhodopsin sequences. *Mol. Biol. Evol.* (in press)

Arbuscular mycorrhizal fungi, Collembola and plant growth

Alan Gange

There is an intriguing paradox in arbuscular mycorrhizal (AM) fungal ecology. Although there are numerous laboratory studies that have shown a variety of benefits to plants in forming a mycorrhizal association, there have been far fewer occasions when these benefits have also been demonstrated in natural situations¹. Positive effects of AM fungi on plants include enhanced nutrient uptake, protection against pests and pathogens, and relief of drought stress². Recently, it has been suggested that the response of any plant to AM colonization lies along a continuum from positive to negative³. Therefore, the question naturally arises as to whether laboratory studies at the positive end of this continuum are realistic mimics of field situations, which appear to lie in the null (no response) area. There is an urgent need to understand this problem, so that the ecology of mycorrhizas might be better described and future management of the symbiosis improved. In laboratory studies, many factors can be controlled, and some or all of these might be responsible for reducing the efficacy of AM fungi in field conditions. These include soil nutrient levels, plant stress factors (e.g. drought), plant diseases, and herbivorous and mycophagous animals⁴. An important group in the latter category is the Collembola (springtails).

Collembola are abundant microarthropods in virtually all soils, feeding on a range of materials, including fungi, bacteria, lichens, decomposing vegetation and detritus. The feeding ecology of most species is poorly known⁵, but there appears to be a preference for fungal hyphae over other food types. By consuming dead vegetation and hyphae, these animals can play an important role in decomposition processes⁶. In many cases, Collembola can enhance the decomposition process because hyphal grazing stimulates growth and respiration of the fungi⁷. The fact that most of

Arbuscular mycorrhizal fungi are ubiquitous in field soils, as are mycophagous animals such as Collembola. It has been suggested that these animals reduce the functioning of the mycorrhiza and are thus detrimental to plant growth. However, recent choice experiments suggest that Collembola preferentially feed on nonmycorrhizal fungi in the rhizosphere. If these preferences also occur in field soils, then Collembola might indirectly benefit plants through an enhancement of mycorrhizal functioning and indirect multitrophic links to foliar-feeding insect herbivores.

Alan Gange is at the School of Biological Sciences, Royal Holloway University of London, Egham, Surrey, UK TW20 0EX (a.gange@rhbnc.ac.uk).

the subterranean species feed (at least in part) on fungi has led to their being regarded as important regulators of the mycorrhizal symbiosis. Reviews of AM–soil fauna interactions suggest that Collembola have the potential to restrict mycorrhizal functioning in the field^{8,9}, but null and stimulative effects of their feeding have also been recorded. Other authors question their importance⁴, thus it is timely to ask whether Collembola are responsible for the disruption of AM associations, and whether they are one reason for the failure of field experiments to match results obtained under controlled conditions.

Laboratory studies

It is apparent that one species, *Folsomia candida*, has been used in almost 50% of laboratory pot trials (Fig 1a). The reason is simple: *F. candida* is exceptionally easy to culture, unlike many other species. However, to quote from a recent review¹⁰, using this species as representative of all Collembola ‘is about as ecologically sound as choosing a mole as a “typical” mammal’. It is interesting that the frequency distribution of AM fungal species used shows a less skewed distribution (Fig. 1b), but this also represents species that are generally amenable to pot culture. There have been remarkably few attempts to recreate a field situation in the laboratory by using co-occurring species of Collembola and AM fungi from one field site (but see Ref. 11).

Collembola densities in pot trials are usually given in numbers of individuals per dm³, but these have been converted to numbers per m² for ease of comparison with known field densities (Table 1). With few exceptions¹², the density of animals used has been at, or below, that normally encountered in comparable field situations²¹. A feature of this summary is that only the two early studies recorded a negative effect on plant growth resulting from collembolan grazing on the mycorrhiza^{18,19}. In these laboratory trials, there are three

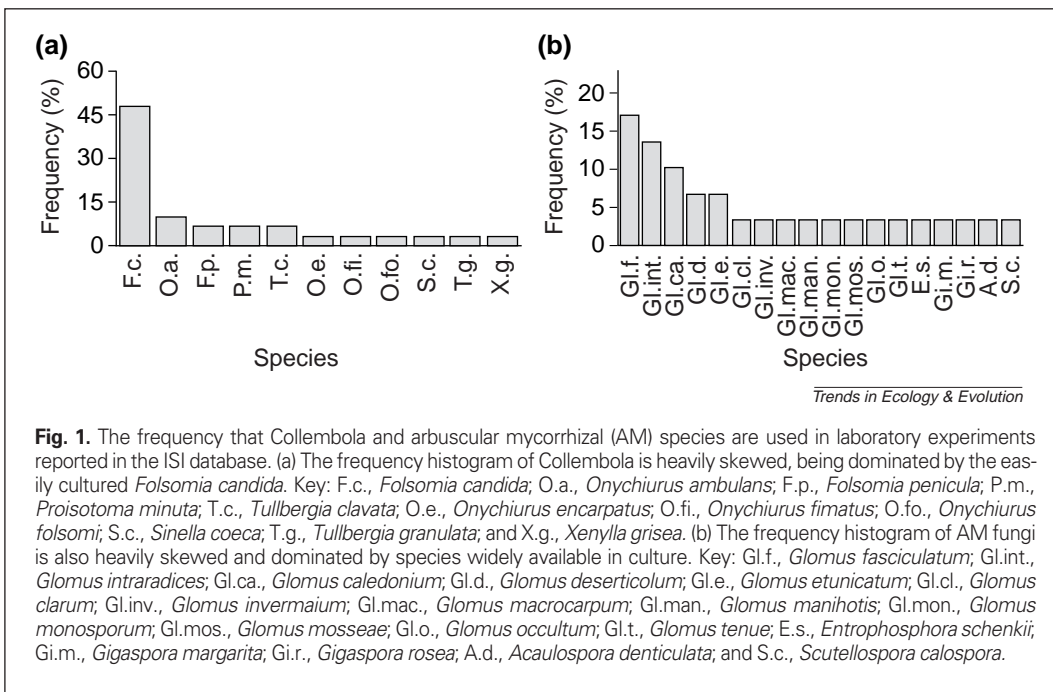


Fig. 1. The frequency that Collembola and arbuscular mycorrhizal (AM) species are used in laboratory experiments reported in the ISI database. (a) The frequency histogram of Collembola is heavily skewed, being dominated by the easily cultured *Folsomia candida*. Key: F.c., *Folsomia candida*; O.a., *Onychiurus ambulans*; F.p., *Folsomia penicula*; P.m., *Proisotoma minuta*; T.c., *Tullbergia clavata*; O.e., *Onychiurus encarpatus*; O.fi., *Onychiurus fimatus*; O.fo., *Onychiurus folsomi*; S.c., *Sinella coeca*; T.g., *Tullbergia granulata*; and X.g., *Xenylla grisea*. (b) The frequency histogram of AM fungi is also heavily skewed and dominated by species widely available in culture. Key: Gl.f., *Glomus fasciculatum*; Gl.int., *Glomus intraradices*; Gl.ca., *Glomus caledonium*; Gl.d., *Glomus deserticolum*; Gl.e., *Glomus etunicatum*; Gl.cl., *Glomus clarum*; Gl.in., *Glomus invermaium*; Gl.mac., *Glomus macrocarpum*; Gl.man., *Glomus manihotis*; Gl.mon., *Glomus monosporum*; Gl.mos., *Glomus mosseae*; Gl.o., *Glomus occultum*; Gl.t., *Glomus tenue*; E.s., *Entrophospora schenkii*; Gi.m., *Gigaspora margarita*; Gi.r., *Gigaspora rosea*; A.d., *Acaulospora denticulata*; and S.c., *Scutellospora calospora*.

Trends in Ecology & Evolution

instances of positive and two of negative effects. Six experiments produced no effect on plant growth, even though Collembola apparently reduced AM colonization in five of these^{13,14,16,17}. Therefore, the notion that mycorrhizal grazing by Collembola disrupts the functioning of symbiosis is not entirely supported by the literature.

Perhaps the greatest problem with most pot trials is that they are set up with a single plant–fungus–collembolan combination – a situation that is most unrealistic of field conditions. Of crucial importance is the fact that the soil used would not have contained as diverse an array of nonmycorrhizal fungi as would be found in the field. Although none of the trials in Table 1 was performed in sterile conditions, it is probable that the most abundant fungal hyphae would have been mycorrhizal because these were inoculated in each case. When fungal preference trials have been performed^{22,23}, it has been shown that Collembola consistently graze on other soil fungi, in preference to AM species. Furthermore, if different Collembola species are offered a selection of AM fungal species, distinct preferences are seen by each Collembolan species; however, these are not consistent between Collembola^{24,25}. Therefore, Collembola will graze on AM fungi but not through choice. The conclusion is that future pot trials involving Collembola, AM fungi and plants should also include a known nonmycorrhizal fungal complement. If a situation is set up in which the animals have little choice but to feed on the mycorrhizal species offered, then at reasonably high density we would expect to see a detrimental effect on the functioning of the symbiosis. However, if other fungal species are preferentially grazed, then the outcome of the experiment could be positive for the plant (see next section).

Field experiments

To understand the role of Collembola in AM associations, we need to perform studies in field situations. However, manipulation of soil communities is extremely difficult because there is no biocide specific to either Collembola or AM fungi. In the few situations where insecticide application has been used to reduce numbers of Collembola^{19,20} (Table 1), there was some evidence that reduction in grazing resulted in increased phosphorus (P) uptake and plant growth. This

might be circumstantial evidence that the Collembola were grazing on the AM fungi, thus reducing plant P uptake. It is also possible that the death of many soil animals resulted in a flush of nutrients for plants, thus resulting in higher P content in the biocide treatment. Furthermore, the insecticide used in both studies was broad-spectrum and the observed effects could have resulted from the removal of other larger rhizophagous insects, which feed on roots and also disrupt the mycorrhizal mycelium.

Instead of attempting to reduce numbers of a target group, one can take the alternative approach and augment a community with a particular species. Technically, this is much easier than

reduction, but is open to criticism in that the resulting densities might be unrealistically high. One experiment has taken this approach, with the addition of Collembola to microcosms surrounding soybean plants¹². In this case, the augmented densities were not excessive (a 26% increase), possibly owing to predation of the Collembola. However, what is interesting is that mycorrhizal colonization of the plants was enhanced in Collembola addition treatments, although no effect on plant growth was recorded. It is plausible that this study provides the first field evidence to prove that, at moderate densities, Collembola are actually beneficial to mycorrhizas rather than detrimental. These effects could have been caused by enhanced grazing on fungi, which compete with, or are antagonistic to, AM species – similar to the laboratory experiments described in the next section.

Positive effects on plants

Several controlled studies have shown a positive effect on plant growth of collembolan feeding on mycorrhiza^{12,17,19}. In each case, the response of the plant at increasing collembolan densities has been bell-shaped, remarkably similar to that seen in situations where Collembola graze on non-AM fungi¹⁰. For the plant–AM fungal association, stimulation of plant growth at intermediate densities is thought to result from either an increase in hyphal growth or mineralization of nitrogen (N) and P. At low collembolan densities, the hyphae are not stimulated to grow, but at high densities the grazing is detrimental. At intermediate densities, the preferential removal of small diameter hyphae towards the exterior of the mycelium²² might result in proliferation and a consequent increase in benefit to the plant through mineral uptake. Alternatively, the release of N and P from Collembola faeces²⁶, and subsequent plant uptake, might be sufficient to more than compensate for hyphal loss at intermediate animal densities.

These studies^{12,17,19} also suffer from oversimplification, because Collembola were presented with only one mycorrhizal species as a food source. A much more realistic experiment¹¹ examined the effects of feeding by a variety of microarthropods on AM fungi and growth of sugar maple (*Acer saccharum*). Here, the simultaneous addition of three mite and three collembolan species, at densities similar to those found in the field, had no effect on maple growth.

Table 1. Investigation of grazing by Collembola on AM fungi and the consequences for plant growth^{a,b}

Type of experiment	Collembolan density ($\times 10^3 \text{ m}^{-2}$)	Effect on AM fungus	Effect on plant growth	Refs	
Laboratory	17.0–150.0	Not recorded	Positive	12	
	24.0	HD: negative; RC: –	–	13	
	21.0–42.0	HD: negative; RC: –	–	14	
	2.8–11.0	Not recorded	–	15	
	9.5	RC: negative	–	16	
	6.0	RC: negative	Positive	17	
	1.9	RC: negative	–	17	
	3.2	RC: negative	–	17	
	3.0–22.0	–	Negative	18	
	<5.0	–	Positive	19	
	7.0–25.0	–	Negative	19	
	Field	0.99	RC: positive	Positive	12
		5.0	Not recorded	Negative	19
5.0		–	Negative	20	

^aKey: AM, arbuscular mycorrhizal fungi; HD, hyphal density; RC, density of root colonization; –, no effect.

^bReferences obtained from the ISI database. To put the collembolan densities used into perspective, an approximate average value for the temperate ecosystems simulated here is 48×10^3 individuals m^{-2} (Ref. 21). Most studies have used densities towards the lower end of the abundance scale and only one study¹² has used the very high numbers that can occur in nature²¹.

However, addition of the microarthropods and some decaying maple leaf litter resulted in a 59% increase in arbuscular colonization and a 32% increase in shoot biomass. Because the microarthropods preferred to feed on the non-AM fungi in the experiment, it appears that providing them with an alternative food source allowed mycorrhizal growth. It was suggested that by feeding on fungi that might compete with the mycorrhiza for root space and by the release of minerals from the ingested hyphae, greater AM colonization of roots and nutrient uptake occurred, with a benefit to plant growth. Therefore, this study¹¹ (like the previously mentioned field experiment¹²) raises the intriguing possibility that Collembola might be beneficial, rather than detrimental, to mycorrhizal functioning.

Mechanisms

There is no doubt that Collembola are capable of grazing on mycorrhizal hyphae, but these are probably not their preferred food²³. Choice experiments in which Collembola are fed AM and non-AM fungi are extremely limited^{22,27}. As a result, it is unknown why AM fungi appear to be relatively unpalatable to these animals, compared with saprophytic fungi. One reason, based on the optimal foraging model²⁸, has been put forward²⁷. According to this model, one would expect Collembola to preferentially feed on the food source that is most energetically rewarding and that maximizes reproductive success. It is interesting that the one study to address this question has found that reproductive success was indeed greater on non-AM fungi²⁷ when consumed in preference to AM fungi. However, the actual mechanism determining palatability remains unknown. It might be due to hyphal thickness and architecture, because most of the intricate AM mycelium is composed of hyphae $>10 \mu\text{m}$ (Ref. 29) and Collembola preferentially attack thin hyphae $<0.5 \mu\text{m}$ in diameter²². Alternatively, AM hyphae might be low in nutrients or high in antifeedants compared with saprophytic fungal hyphae, but these possibilities have yet to be examined.

At some of the extremely high field densities that have been reported for these animals²¹, it is possible that preferred fungal food resources could be depleted to the extent that AM fungi become heavily grazed. However, we

have yet to see a field experiment with Collembola and AM fungi in which the animal densities reach their recorded upper range²¹ of $1 \times 10^5 \text{ m}^{-2}$. If, at these extraordinary densities, AM fungi are eaten in the field, then the nature of the grazing interaction becomes important. If the ends of hyphal elements are severed, then regeneration might occur and the chance for proliferation of the hyphae exists. However, a mycorrhiza has an internal hyphal element in a root and an external one in the soil. If the hyphae are severed at the root surface, then this could have serious consequences for the plant. The internal mycelium would still receive carbon compounds from the host but the reciprocal transaction, namely the provision of mineral nutrients, is lost. Because the internal mycelium might represent as much as 20% of the biomass of a root⁸, it would become parasitic rather than mutualistic. The limited evidence we have is that even at high densities Collembola do not sever the larger hyphae at the root surface, but instead attack thin walled hyphae away from the root^{22,23}. Such a pattern of attack might limit the ability of the fungus to forage for nutrients, but the effects on the plant will be far less severe than if the hyphae were severed at the root surface. Therefore, it is possible that in most field situations, Collembola do not have a sufficiently negative effect on mycorrhizal functioning to be manifest in directly reduced plant growth.

Instead, they are more likely to have positive effects on plant growth and there are several mechanisms by which this might occur. Grazing on non-AM fungi might result in increased N mineralization; however, this might not always result in an increased uptake of nitrate (NO_3^-) by the mycorrhiza²⁶. This is because other microbes in the rhizosphere might take up the N and immobilize it. Grazing on non-AM fungi, which compete with the mycorrhizal fungus for root space, might allow greater colonization of the root by AM fungi. There is little evidence for this (Table 1), but if it did occur, it might be of indirect benefit to plants through enhanced nutrient uptake or protection against root pathogenic fungi³⁰.

A fascinating possibility is that Collembola might have indirect effects on plant growth by causing changes in the performance of foliar-feeding insects on the same plant.

Although not a mycorrhizal experiment, it has recently been shown that the presence of Collembola in soil can lead to a decrease in reproduction of the aphid *Myzus persicae* when feeding on *Trifolium repens*³¹. The causal mechanism was unclear. If, at moderate densities, Collembola can enhance mycorrhizal colonization, this might lead to improved plant growth because AM fungi increase the resistance of foliar tissues to chewing insects³². The mechanism is thought to be one in which the C:N ratio of the plant is increased by the mycorrhiza, leading to an increase in carbon-based defence compounds that are active against generalist chewing insects³³. Meanwhile, if high densities of Collembola do reduce AM colonization, then the performance of foliar-sucking insects might also be reduced because AM fungi have recently been shown to increase aphid performance³⁴.

A final mechanism by which Collembola might positively affect AM fungi is through their dispersal. Several studies have shown that AM fungal spores can be present in the guts of Collembola⁸ and the first demonstration of AM dispersal in soil by Collembola has recently been presented³⁵. The effect depends on the species of mycorrhiza involved.

Prospects

Evidence for the disruption of the AM mutualism by Collembola is equivocal. Indeed, the opposite might be true; Collembola might allow enhanced mycorrhizal growth and thereby be of indirect benefit to plants. However, there is an urgent need for the design of microcosm experiments that are ecologically realistic, so as to better understand this fascinating interaction. In particular, densities of Collembola need to mimic those found in the field, with ecologically realistic combinations of AM and non-AM fungi. The mechanism determining fungal palatability needs to be established and experiments conducted to determine whether preferential feeding is caused by chemical or morphological differences in AM and non-AM fungi. Finally, to determine if Collembola do reduce mycorrhizal functioning in the field, technologically difficult experiments need to be done, in which populations of animals and fungi are manipulated, although other soil organisms are unaffected. Given that AM fungi can affect the structure of plant communities, enhancing diversity and productivity³⁶, an understanding of the interactions between Collembola, AM fungi and herbivorous insects will be an important step forward in our knowledge of community-structuring forces.

Acknowledgements

I am grateful to A. Fitter and J. Klironomos for their helpful comments on this article.

References

- 1 Klironomos, J.N. and Kendrick, W.B. (1993) Research on mycorrhizas – trends in the past 40 years as expressed in the MYCOLIT database. *New Phytol.* 125, 595–600
- 2 Dodd, J.C. (2000) The role of arbuscular mycorrhizal fungi in agro- and natural ecosystems. *Outlook Agric.* 29, 5–62
- 3 Gange, A.C. and Ayres, R.L. (1999) On the relation between arbuscular mycorrhizal colonization and plant ‘benefit’. *Oikos* 87, 615–621
- 4 Smith, S.E. and Read, D.J. (1997) *Mycorrhizal Symbiosis*, Academic Press
- 5 Rusek, J. (1998) Biodiversity of Collembola and their functional role in the ecosystem. *Biodiv. Conserv.* 7, 1207–1219
- 6 Hedlund, K. and Ohrn, M.S. (2000) Tritrophic interactions in a soil community enhance decomposition rates. *Oikos* 88, 585–591
- 7 Lussenhop, J. (1992) Mechanisms of microarthropod–microbial interactions in soil. *Adv. Ecol. Res.* 23, 1–33
- 8 Fitter, A.H. and Sanders, I.R. (1992) Interactions with the soil fauna. In *Mycorrhizal Functioning, An Integrative Plant–Fungal Process* (Allen, M.F., ed.), pp. 333–354, Chapman & Hall

- 9 Fitter, A.H. and Garbaye, J. (1994) Interactions between mycorrhizal fungi and other soil organisms. *Plant Soil* 159, 123–132
- 10 Hopkin, S.P. (1997) *Biology of the Springtails (Insecta: Collembola)*, Oxford University Press
- 11 Klironomos, J.N. and Kendrick, W.B. (1995) Stimulative effects of arthropods on endomycorrhizas of sugar maple in the presence of decaying litter. *Funct. Ecol.* 9, 528–536
- 12 Lussenhop, J. (1996) Collembola as mediators of microbial symbiont effects upon soybean. *Soil Biol. Biochem.* 28, 363–369
- 13 Larsen, J. and Jakobsen, I. (1996) Interactions between a mycophagous Collembola, dry yeast and the external mycelium of an arbuscular mycorrhizal fungus. *Mycorrhiza* 6, 259–264
- 14 Larsen, J. and Jakobsen, I. (1996) Effects of a mycophagous Collembola on the symbioses between *Trifolium subterraneum* and three arbuscular mycorrhizal fungi. *New Phytol.* 133, 295–302
- 15 Boerner, R.E.J. and Harris, K.K. (1991) Effects of collembola (Arthropoda) and relative germination date on competition between mycorrhizal *Panicum virgatum* (Poaceae) and non-mycorrhizal *Brassica nigra* (Brassicaceae). *Plant Soil* 136, 121–129
- 16 Kaiser, P.A. and Lussenhop, J. (1991) Collembolan effects on establishment of vesicular–arbuscular mycorrhizae in soybean (*Glycine max*). *Soil Biol. Biochem.* 23, 307–308
- 17 Harris, K.K. and Boerner, R.E.J. (1990) Effects of belowground grazing by collembola on growth, mycorrhizal infection, and P uptake of *Geranium robertianum*. *Plant Soil* 129, 203–210
- 18 Warnock, A.J. et al. (1982) The influence of a springtail *Folsomia candida* (Insecta, Collembola) on the mycorrhizal association of leek *Allium porrum* and the vesicular–arbuscular mycorrhizal endophyte *Glomus fasciculatus*. *New Phytol.* 90, 285–292
- 19 Finlay, R.D. (1985) Interactions between soil micro-arthropods and endomycorrhizal associations of higher plants. In *Ecological Interactions in Soil* (Fitter, A.H. et al., eds), pp. 319–331, Blackwell
- 20 McGonigle, T.P. and Fitter, A.H. (1988) Ecological consequences of arthropod grazing on VA mycorrhizal fungi. *Proc. R. Soc. Edinburgh Sect. B* 94B, 25–32
- 21 Petersen, H. and Luxton, M. (1982) A comparative analysis of soil faunal populations and their role in decomposition processes. *Oikos* 39, 287–388
- 22 Klironomos, J.N. and Kendrick, W.B. (1996) Palatability of microfungi to soil arthropods in relation to the functioning of arbuscular mycorrhizae. *Biol. Fertil. Soils* 21, 43–52
- 23 Klironomos, J.N. and Ursic, M. (1998) Density-dependent grazing on the extraradical hyphal network of the arbuscular mycorrhizal fungus, *Glomus intraradices*, by the collembolan, *Folsomia candida*. *Biol. Fertil. Soils* 26, 250–253
- 24 Moore, J.C. et al. (1985) Ingestion of vesicular–arbuscular mycorrhizal hyphae and spores by soil microarthropods. *Ecology* 66, 1979–1981
- 25 Thimm, T. and Larink, O. (1995) Grazing preferences of some collembola for endomycorrhizal fungi. *Biol. Fertil. Soils* 19, 266–268
- 26 McGonigle, T.P. (1995) The significance of grazing on fungi in nutrient cycling. *Can. J. Bot.* 73 (Suppl.), S1370–S1376
- 27 Klironomos, J.N. et al. (1999) Reproductive significance of feeding on saprobic and arbuscular mycorrhizal fungi by the collembolan, *Folsomia candida*. *Funct. Ecol.* 13, 756–761
- 28 Stephens, D.W. and Krebs, J.R. (1986) *Foraging Theory*, Princeton University Press
- 29 Friese, C.F. and Allen, M.F. (1991) The spread of VA mycorrhizal fungal hyphae in soil – inoculum types and external hyphal architecture. *Mycologia* 83, 409–418
- 30 Newsham, K.K. et al. (1995) Multifunctionality and biodiversity in arbuscular mycorrhizas. *Trends Ecol. Evol.* 10, 407–411
- 31 Scheu, S. et al. (1999) Links between the detritivore and herbivore system: effects of earthworms and Collembola on plant growth and aphid development. *Oecologia* 119, 541–551
- 32 Gange, A.C. and Bower, E. (1997) Interactions between insects and mycorrhizal fungi. In *Multitrophic Interactions in Terrestrial Systems* (Gange, A.C. and Brown, V.K., eds), pp. 115–132, Blackwell Science
- 33 Gange, A.C. and West, H.M. (1994) Interactions between arbuscular mycorrhizal fungi and foliar-feeding insects in *Plantago lanceolata* L. *New Phytol.* 128, 79–87
- 34 Gange, A.C. et al. (1999) Positive effects of mycorrhizal fungi on aphid life history traits. *Oecologia*, 120, 123–131
- 35 Klironomos, J.N. and Moutoglis, P. (1999) Colonization of nonmycorrhizal neighbours as influenced by the Collembolan, *Folsomia candida*. *Biol. Fertil. Soils* 29, 277–281
- 36 van der Heijden, M.G.A. et al. (1998) Mycorrhizal fungal diversity determines plant biodiversity, ecosystem variability and productivity. *Nature* 396, 69–72