

How to change your SPSS Network License Server settings

Applies to

SPSS 14

SPSS 16

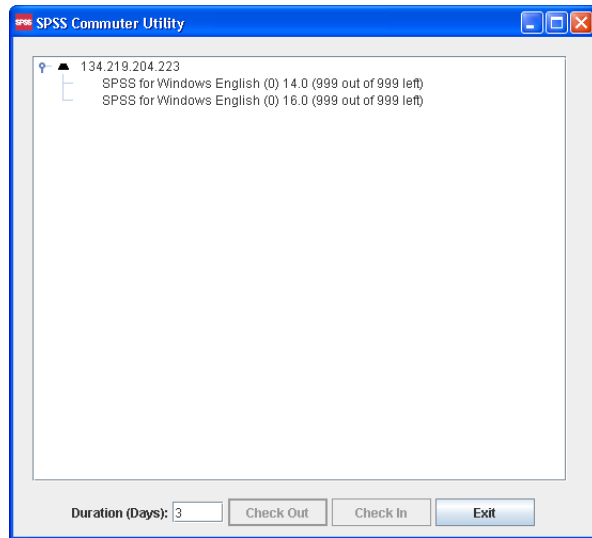
Background

The servers that host the SPSS network license service are out of warranty and the service has been moved across to the Computer Centres resilient Virtual Server platform. This means that if you have an RHUL installed copy of SPSS 14 or 16 the SPSS settings on your computer need to change in line with the server move by the end of August 2010 when the old servers will be switched off. The computer centre will be pushing the change out via SCCM to all domain clients, however, if you have a laptop or computer which is not on the CC domain within the computer centre SCCM database you will need to make this change yourself. Fortunately the process is straight forward and involves only three steps:

1. Download the SPSS migration Zip archive for your version to your computer.
2. Decompress the archive (right click on file extract all)
3. Run the batch file

Instructions

When you launch the SPSS commuter license program there should be a single server listed 134.219.204.223 as per screen shot below. If this is not the case you need to update your SPSS settings.



1. Download the archive for your version of SPSS - either [spss14mig.zip](#) or [spss16mig.zip](#) - to your desktop
2. Extract the archive by right clicking on the file and selecting "extract all"
3. Double click on the spss14 or spss16 batch file in the folder extracted.
4. Confirm the changes were successful by running the commuter license program. You should now see one server 134.219.204.223 with licenses available for SPSS 14 and 16.
5. You can delete the files downloaded once used if you wish.