

# Higher

Issue 19 Winter 2013



## The Curiosity Project:

Lifting the lid on the next exciting phase in our development



**The Sheriff of London:** Adrian Waddingham's year in the saddle  
**ICT4D:** Leading the way in using new technologies for development  
**Finding a voice:** How the brain controls vocal identity



# LEAVE YOUR MARK ON CAMPUS...

## OR YOUR



### Add your name to our special brick pathway and leave your permanent mark on the College

We're inviting Royal Holloway and Bedford New College alumni, students, staff and supporters to add their names to a special brick pathway, which will lead from Founder's Building to our stunning new library when it opens in 2016.

For a donation of £100, you can personalise one of the English Heritage-approved bricks with up to 32 characters and have it set into our walk of fame. At the same time, you'll be helping Royal Holloway to move forward with its ambitious plans - and up the university rankings.



#### **BE A BRICK - BUY A BRICK**

Visit [www.royalholloway.ac.uk/brick](http://www.royalholloway.ac.uk/brick) to give your name and pay online.

Alternatively, you can call **01784 414478** to give your name and pay by credit card or cheque. You can even pay by monthly instalments of £5 via Direct Debit - just visit [royalholloway.ac.uk/brick](http://royalholloway.ac.uk/brick) to set it up.



## **THE CURIOSITY PROJECT AT ROYAL HOLLOWAY FUELLING INQUISITIVE MINDS**

# Contents



JFK: new book on page 37

## In Focus 4

4–5 Women of India

## News 6

6 From the Principal  
7 Letters to the Editor  
8–9 College news  
10 Honorary Awards 2013  
11 Towards Magna Carta 800, by Nigel Saul

## Features 12

12–13 The Sheriff of London's year in the saddle  
14–17 ICT4D: Leading the way in using new technologies for development  
18–19 The way we were: Looking back at College life  
20–21 The Higgs particle  
22–23 Finding a voice: How the brain processes vocal identity and emotion  
24–25 Movers & Shakers...The Designers  
26–27 The Curiosity Project

## Alumni 28

28 The Bedford Society  
29–33 Class notes  
34–35 In memoriam  
36–37 New books by alumni  
38–48 Roll of Donors

## Dates for Your Diary 50

50 Alumni and College events

Editor: Steve Pickles s.pickles@rhbc.ac.uk

Cover image: Fowler's phrenological head © Science Museum/SSPL; discus thrower © Eureka/Alamy

The paper contains material sourced from responsibly managed forests.  
The manufacturing mill has both ISO 14001 and EMAS accreditation and is also accredited to produce paper to FSC standards.  
Higher magazine is published by Royal Holloway, University of London, Egham, Surrey, TW20 0EX.









# Women of India

Whilst at Royal Holloway, Rosa Pellicer founded Sustainable Empowerment for Women (S.E.W.) in Anantapur, southern India, a project which has helped a community of 40 impoverished women to improve their lives by starting their own business. This initiative was part of SIFE or Students in Free Enterprise (now called Enactus), a global community of students who use entrepreneurship to help those in need.

"I had witnessed the harsh realities that many women face in India. Indeed, violence and disrespect were a recurring theme, especially within poor and rural communities. Our project showed the women that took part how to produce and sell incense sticks; we covered everything from market research and product development to production and sales. It enabled them to rise above the poverty line and it increased their incomes by approximately 80%. These women are now able to provide the necessary support for their families, and buy groceries such as milk and vegetables. Some of them have also been able to save, in order to purchase the necessary treatment for their children and protect them from allergies and other health issues. Before the project, they would ask their husband for money, which would cause conflict, and often violence, within the household. By earning their own money, men see their wives as equals, curbing the violence significantly."

**Rosa Pellicer** (pictured centre)  
BSc Economics, Politics & International Relations,  
2013

## From the Principal



Welcome to the Winter 2013 edition of Higher magazine. In the busy days ahead, I hope that you will steal a few minutes to read some of the latest news from College. As usual, you will find stories about our leading research, extraordinary students, and phenomenal alumni, which I hope stoke your pride in the College as much as they do mine. This edition is particularly exciting because it marks the launch of The Curiosity Project, our campaign to raise £25 million in donations over the next five years.

The Curiosity Project will create a legacy, not just in bricks and mortar, but in fields as diverse as particle physics, creative writing, gene therapy, music, cyber security, sport and rare disease. The campaign supports our new College Strategy, which sets out our plan to attract more brilliant researchers, teachers and students to Royal Holloway. It will secure our tradition of rethinking the possible and making a difference to the world into the next decade.

The Curiosity Project and the College strategy it supports are not starting points, but steps along a journey we have already begun. So far this term, we have opened our new £3.5 million theatre and refurbished drama building, named after Professor Katharine Worth, Britain's first female Professor of Theatre and the founder of our Department of Drama and Theatre. We have unveiled the second phase of the Boiler House refurbishment, which brings a much needed 200 seat lecture theatre and new performance space to campus; and plans for our new Library are well underway.

These physical developments are accompanied by two key successes in securing funding for doctoral training centres, working in collaboration with other leading universities. We led a winning consortium, awarded £13.5 million to fund approximately 176 postgraduate students in the arts and humanities, as well as securing a share of £100 million of government funding for future environmental scientists as one of 15 newly established Doctoral Training Partnerships.

These successes, both in developing our physical campus and securing investment in the brilliant minds to which it is home, give me every confidence that The Curiosity Project will also be a success, and I do hope you agree. Every gift brings us one step closer to our goal and there are plenty of different opportunities to contribute; find out more on pages 26 -27.

Finally, from this edition, Higher will become an annual publication. The spring edition will go to make room for an annual report. In addition to alumni information and highlights from the year, the annual report will illustrate the remarkable financial support the College receives from alumni, parents and friends. It will also include an impact report so that donors and prospective donors can see the important difference that charitable gifts, like donations to The Curiosity Project, make to Royal Holloway.

**Professor Paul Layzell**

# Letters to the editor

Email: [alumni@rhbnc.ac.uk](mailto:alumni@rhbnc.ac.uk)



Dear Sir

I was surprised to read in the last issue that Community Action was just 10 years old. When I was a student in the mid-1970s there was a thriving Community Action group which worked with a range of people, from young offenders at Feltham to children with learning disabilities. The group ran a play scheme each half term for disabled children, helped at a youth club for teenagers, most of whom had Down's syndrome, and linked individual students with a family who had a disabled child. It was my involvement with Community Action which inspired me to go on to adopt two boys with Down's syndrome, so Community Action really transformed my life.

**Helen Ruffhead** (BSc Mathematics with Statistics, 1978 Royal Holloway College) Redhill, Surrey

**Editor:** The use of the name Community Action is a coincidence in this instance. The current programme was set up in 2002 with government funding from the Higher Education Active Community Fund. When this funding ceased in 2007-08 the College continued to support this vital initiative as part of its core budget.

Dear Sir

Were you aware that the United Kingdom was a comparatively recent convert to the concept of 'one man, one vote' in Parliamentary elections? No, I am not talking here about the extension of the franchise to all women over the age of 21 in 1928, but about the abolition in 1948 of the second vote which had been granted to graduates of British universities by the Reform Act of 1867. The first General Election to which this abolition applied was that of 1950.

My curiosity was aroused when my elderly relative, Freda Coles, now 96 and a graduate of Bedford College, told me that she voted for Mary Stocks in the 1945 General Election, in addition to voting in the local constituency in which she was registered.

The London University constituency was not a physical area, and its electorate consisted of the graduates of the University of London. There were 23,948 registered electors in 1945, of whom 63% cast their votes. Freda's vote was to no avail for, with just 2 candidates standing, Mary Stocks was defeated by Sir Ernest Gorden Graham Graham-Little, with a majority of just 149. Baroness Stocks, as she later became, was well known for her campaigns in the field of the welfare state, declaring herself to be an Independent Progressive.

Earlier candidates who had stood unsuccessfully for the London University constituency included H.G. Wells and Sidney Webb. I wonder if there are any other readers of Higher who recollect voting twice (quite legitimately)?

**James Dixon** (MA Modern History: Power, Culture & Society, 2005)



H G Wells stood for election as London University MP



Dear Sir

I noted with pleasure the 'Alumni Generations' column in the last issue, as it featured the marriage of young graduates Nick Warlow and Selina Whitehead. Before attending RHBNC, Nick was an A-Level student of mine when I was teaching. I, in turn, was also taught by an alumna: Marjorie Hilton at Manchester High School for Girls.

Marjorie was a Royal Holloway College alumna and I went on to Bedford College, so it is good to muse at these 'chains of learning', as generations of RHBNC alumni pass on their skills, enthusiasm and inspiration to new generations of students.

**Joyce Davis** (née Bowling, BSc Zoology, 1958 Bedford College) Oxford

Dear Sir

I was so glad that you marked the centenary of the suffragette, Emily Wilding Davison, in the last issue. In 1953, when the young Queen Elizabeth came to the throne, I was asked to design a Speech Day poster for my school, Queen Ethelburga's, Harrogate. I depicted the twenty-five year old Queen with suffragette figures like Pankhurst and Davison looking up to her and a map of the world showing all the Commonwealth countries in red! It was a time of hope for all young women in Britain, and all over the world!

**Anne Thomas FRSA** (BA General Arts, 1956 Royal Holloway College) Chislehurst, Kent

Dear Sir

In the 'Timeline of the Colleges' article in the last issue, Dame Lillian Penson, Professor of Modern History at Bedford (1930-62), has no mention. As Vice-Chancellor of the University (1948) she was the first woman to be appointed chancellor to any University.

**Jane Neely** (BA History, 1949 Bedford College) Ingatstone, Essex



Dame Lillian Penson



# College News

## Ranked amongst the world's top universities

The College has been celebrating its success in climbing 17 places in the Times Higher Education (THE) world university rankings for 2013-14. This puts the University 12th in the UK, 36th in Europe and 102nd in the world. Within that, Royal Holloway is also ranked 1st for its international outlook. The rankings rate universities on 13 measures, such as teaching, research and international outlook, which includes the proportion of international research

collaborations and the ability of a university to attract students and staff from across the world. Royal Holloway showed continued success in citations and international outlook, as well as improved scores and ranking for industry income and teaching. The College has successfully held its own, while a number of other UK universities have slipped down the table. This is the 10th year that the THE has published its annual world rankings.



## The Choir's Baltic adventures



Described as "spellbinding" by reviewers, Kreek's Notebook is the latest recording of the Choir of Royal Holloway. They are joined by the Britten Sinfonia for this rich collection of music from Estonia and Latvia, their third recording of Baltic music for Hyperion Records. The title work pays homage to Cyrillus Kreek, the first composer to research and collect Estonian folk hymns. During the Soviet regime, the singing of these religious songs was forbidden and this cultural genre was all but forgotten. At the end of the 20th century, however, the composer Tõnu Kõrvits was struck by the fresh possibilities and newly-discovered meanings of folk hymns.

The CD was launched as the Choir embarked on a two-week tour of Lithuania, Latvia and Estonia. They joined the Tallinn Chamber Orchestra to perform Kreek's Notebook in Tallinn, during a concert that was broadcast on Estonian radio. They were also guests of the Latvian choir BALSIS and took part in the 25th Latvian Song Festival, which brought more than 40,000 singers to Riga. In addition, the Choir performed in the cathedrals of Riga and Kaunas and gave the opening concert of the Viljandi Early Music Festival in Estonia.

Buy the CD and discover more about the Choir at [chapelchoir.co.uk](http://chapelchoir.co.uk)

## How stress is causing bee colonies to fail

Scientists from the School of Biological Sciences have found that extended periods of stress can cause failures in bee colonies. Their research, which was published in the journal *Ecology Letters*, showed that when bees are exposed to low levels of neonicotinoid pesticides - which do not directly kill bees - their behaviour changes and they stop working properly for their colonies. This discovery provides an important breakthrough in identifying the reasons for the recent global decline of bees, a trend that has baffled many experts worldwide.

"One in three mouthfuls of our food depend on bee pollination," said lead author, Dr John

Bryden. "By understanding the complex way in which colonies fail and die, we've made a crucial step in being able to link bee declines to pesticides and other factors, such as habitat loss and disease which can all contribute to colony failure. Exposing bees to pesticides is a bit like adding more and more weight on someone's shoulders. A person can keep walking normally under a bit of weight, but when it gets too much - they collapse. Similarly, bee colonies can keep growing when bees aren't too stressed, but if stress levels get too high the colony will eventually fail."





## New protection against cyber attacks



New technology will help protect people from the cyber-attack known as “phishing,” believed to have affected 37.3 million of us last year, and from online password theft, which rose by 300% during 2012-13. Phishing involves cyber criminals creating fake websites that look like real ones and luring users into entering their login details, and sometimes personal and financial information. Scientists from our Information Security Group have devised a new system called Uni-IDM which will enable people to create electronic identity cards for each website they access. These are then securely stored, allowing owners to simply click on the card when they want to log back in, safe in the knowledge that the data will only be sent to the authentic website.

Professor Chris Mitchell said, “We have known for a long time that the username and password system is problematic and very insecure, proving a headache for even the largest websites. LinkedIn was hacked, and over six million stolen user passwords were then posted on a website used by Russian cyber criminals; Facebook admitted in 2011 that 600,000 of its user accounts were being compromised every single day. Despite this, username and password remains the dominant technology, and while large corporations have been able to employ more secure methods, attempts to provide homes with similar protection have been unsuccessful, except in a few cases such as online banking. The hope is that our technology will finally make it possible to provide more sophisticated technology to protect all internet users.”

## Major award for research into television technology

Why do old television programmes look so strange and formal? And how has technology made modern shows such as Big Brother possible? New research will explore these questions in a £1.3 million study into the history of television technology since 1960, the first of its kind in the UK. From the over-rehearsed feel of black-and-white news interviews, to the filming of reality television, a team led by Professor John Ellis, from the Department of Media Arts, will research the technological constraints and developments that have given programmes their unique appearance. “With a huge amount of archive programming now being shown by channels such as BBC 4, ITV3

and Yesterday, there has never been a more important time to tell the story of how it was filmed,” Professor Ellis said. Researchers will work with former television technicians to discover how limitations in filming technology over the years drove changes in the industry. They will film reconstructions, which will be made available online, and conduct interviews about the difficulties they had adapting to technological changes. The award, from the European Research Council, is one of very few given to social sciences and humanities projects at UK universities.



# Honorary Awards 2013

In May, we awarded Honorary Fellowships to five exceptional supporters of the College: the former Chairman of College Council, the Lord-Lieutenant of Surrey and three distinguished former members of staff. Honorary Degrees were also awarded to six distinguished figures in the arts and sciences during our Science Festival in March and the Graduation Ceremonies in July.

## Honorary Fellows

**Sir Andrew Burns KCMG**, the distinguished diplomat, was Chairman of College Council until 2011. Under his Chairmanship the College grew from 6,000 to 8,500 students.

**Professor Mike Eysenck** was Head of the Department of Psychology from 1987-2005, during which time he laid the foundation for its present position as 7th in the country for research. Mike is regarded as one of the founders of research in stress and anxiety.

**Dame Sarah Goad DCVO JP** was appointed Lord-Lieutenant of Surrey in 1997 and is only the fifth woman in the UK to hold such a position.

**Professor Mike Green** was Head of the Department of Physics and was responsible for ensuring its top ranking in the 2002 Research Assessment Exercise. As Dean of Science he achieved the top ranking for five of his departments. Mike is an outstanding particle physicist.

**Dr Alan Mills** was Senior Medical Officer of the College for 20 years and then led the Health Centre from 2004-11.



Andrew Burns, Alan Mills, Sarah Goad, Mike Green and Mike Eysenck

## Honorary Graduates

**Professor Jim Al-Kalili OBE** has hosted several BBC productions about science and presents *The Life Scientific* on BBC Radio 4. He is Professor of Theoretical Physics and Chair in the Public Engagement in Science at the University of Surrey.

**The Rt Hon The Lord Bragg** is a writer and broadcaster. Melvyn Bragg was editor and presenter of *The South Bank Show* for 33 years. For BBC Radio 4, he presents *In Our Time* and he was the presenter of *Start the Week* from 1988-98.

**David Greig** is one of a new generation of Scottish writers, several of whose plays have become modern classics. Ranging from straight dramas to experimental performance pieces, his plays have been performed by the Royal Shakespeare Company.

**Sir Peter Knight** is Professor of Quantum Optics at Imperial College. He was President of the Institute of Physics, Chief Scientific Advisor at the UK National Physical Laboratory and Chair of the Defence Scientific Advisory Council at the Ministry of Defence.

**Professor Alice Roberts** was one of the original presenters on BBC2's *Coast* and has since presented a range of programmes for the channel. She is Professor of Public Engagement in Science at the University of Birmingham.



**Robin Ince** (BA English & Drama, 1991)

Comedian, writer and populariser of all things rational and scientific, alumnus Robin Ince was awarded an Honorary Doctorate during the College's Science Festival. With Professor Brian Cox, he presents BBC Radio 4's *The Infinite Monkey Cage*, an award-winning and comical tour of the world of science

and scientists that has already completed its eighth series. Robin tours continually, drawing on seemingly inexhaustible reserves of energy and stamina. With recent shows such as *Happiness Through Science* and *The Importance of Being Interested*, he is clearly on a mission to inspire a love of science in us all.



Jim Al-Kalili



Melvyn Bragg



David Grieg



Peter Knight



Alice Roberts



# Towards Magna Carta 800

Nigel Saul, Professor of Medieval History and a member of the Magna Carta 800 Committee, explains why the 800th anniversary of Magna Carta in 2015 is important and how the College will be involved.



Public reflection on the past turns increasingly on the marking of anniversaries, as the College's recent honouring of the centenary of the death of Emily Wilding Davison has shown. In 2015 our attention will turn to an anniversary with a local as well as a national and international dimension: the 800th anniversary of the making of Magna Carta at Runnymede. Members of the College will be involved at all levels in the organisation of events to mark this important occasion.

King John met the barons at the ancient meeting place of Runnymede largely for reasons of convenience, as he was at Windsor at the time and his opponents, who had just taken London, were at Staines. England by now was in a state of civil war, King John's oppression having provoked widespread popular discontent, and the barons of northern and eastern England having risen against him to demand a charter of liberties based on the coronation charter of Henry I. By mid-May the barons had gained the upper hand in the struggle, and in the following month after two weeks of shuttle diplomacy the terms of an agreement – the Great Charter – were

thrashed out. In the short term, this remarkable agreement was to be a failure, as the king quickly secured the pope's backing for tearing it up. Early in the next reign, however, that of his son Henry III, it was reissued in a less controversial form and enshrined as the law of the land. It is this later reissue, agreed to in 1225, which was to be final and definitive, becoming the first statute on the nation's statute book.

Over the course of the centuries, the inheritance of Magna Carta was to be much contested, with some claiming it as the foundation stone of English liberties, and others denouncing it as a concession to feudal privilege. What is beyond doubt is that it broke new ground in placing the king under the law. Before the enacting of the Charter, kings had claimed to be answerable only to God, whereas after it, and because of it, kings were placed under earthly constraint, bound by the same laws and legal processes as their subjects. This is the great achievement of clause 39, which says that no free man shall be imprisoned or dispossessed save by judgement of his peers and by the law of the land.



The field of Runnymede from the Kennedy Memorial

In conjunction with the Magna Carta 800th Committee, we have been staging annual Magna Carta lectures since 2005. Next year's speaker will be Professor Linda Colley CBE, speaking on Magna Carta in British history, on Tuesday 17 June 2014.

We have plans to stage a community fete on Sunday 14 June 2015, to explore the theme of liberty and its meanings for us today. Working with Surrey Arts, staff, students and alumni will be invited to contribute music, hands-on activities, recipes, games and art works to create a special day for our community and our international visitors. We are particularly keen to speak with anyone who lives in other places called Runnymede, or has

connections with schools or colleges called Runnymede or Magna Carta, to add an international dimension to the festivities.

Through the next year, a group of 50 students will be working with Surrey County Council, the National Trust, and Runnymede Pleasure Grounds Trust, to develop a smartphone app about the significance of Magna Carta and the importance of its setting. We will also be providing a number of short talks and guided walks through the summer of 2015.

For further information on any of these projects, or to contribute to ideas for the liberty fair, please contact:

**[emm.johnstone@rhbc.ac.uk](mailto:emm.johnstone@rhbc.ac.uk)**





# The Sheriff of London's year in the saddle

Adrian is a pensions expert and founded the firm of consulting actuaries Barnett Waddingham LLP in 1989. Headquartered opposite St Paul's Cathedral in Cheapside, Barnett Waddingham is now a sixty-partner firm with 600 employees in seven UK offices. Adrian stepped down as Senior Partner in 2012, but remains a partner. He has served as Master of the Worshipful Company of Actuaries and Chairman of the 2010 Association of Past Masters of Livery Companies. He has also chaired the Association of Consulting Actuaries and the International Association of Consulting Actuaries.

**Alumnus Adrian Waddingham CBE took up office as Sheriff of the City of London in September and is enjoying promoting the city he loves. He spoke to *Higher* about his new role and about his career as one of the country's foremost actuaries.**

I'm a lad from Lancashire who supports Preston North End, but I believe London to be the best city in the world to live in. I have lived here for 28 years and my three children all work here. It never fails to surprise and there is so much going on under the surface. The City of London loves its history and pomp, but there is also a cutting edge to developing new markets. The commodities market, for instance, is the only place to trade in Chinese currency outside China. People respect the legal system here and the world brings its legal disputes to London, whether they are Russian oligarchs or Greek shipping tycoons. There is very little industrial arbitration in the USA, for instance; it's mostly done in London.

I was at Royal Holloway College from 1968-71 and graduated with a BSc in Computer Science and Mathematics & Statistics. The campus was generally very politically charged in the late 1960s. I am by inclination a moderate and yet somehow I managed to convince a majority of students that I wasn't so bad, for they elected me Vice-President of the Students' Union. The Maths I learnt at College has always played a key role in my working life. Like music, I find that if you have an aptitude for Maths, you can get along with it really well and with some ease. Of course, it helps that I have fond memories of my tutors.



The Lord Mayor Fiona Woolf CBE with Sir Paul Judge (left) and Adrian Waddingham CBE

In June, the Liverymen of the City of London elected me as the non-Aldermanic Sheriff of the City of London. I am serving my term alongside the Aldermanic Sheriff, Sir Paul Judge, and we are resident (with our wives) in the Old Bailey. My role, amid the Old Bailey's staff of 100, is to oversee the smooth running of its 19 courts, and to ensure the judges' comfort, which includes hosting a daily lunch. However, my primary purpose is to support the Lord Mayor of London in promoting the City nationally and internationally. As the City of London works closely with the Foreign Office to develop closer links with other countries, the Lord Mayor will spend a third of her time abroad and I will accompany her on trips to Turkey and Kazakhstan.



The interior of the Old Bailey

A series of happy accidents brought me to where I am today. The careers service at College suggested a career in advertising for me, but I originally wanted to be a lawyer. One day, I saw an advert in The Daily Telegraph for a job as a trainee actuary in Liverpool. As chance would have it, my girlfriend Angela (now my wife) was already in Liverpool training to be a teacher. I completed the course and joined consulting actuaries Duncan C Fraser & Co in Liverpool, becoming a partner in 1977. After working at the firm for some time, they offered me a chance to head up their office in Kuala Lumpur. I spent four wonderful years there - going out with two children and coming back with three - before returning to the UK in 1985. Again luck smiled: the company's London office was busier than the Liverpool one and so they had me resettle here. Within a few years I started with others a new firm of actuaries.

My involvement in The Worshipful Company of Actuaries, a charitable arm of the actuarial profession, began in the late 1980s and I was Master of the Company in 2009-10. This year, 2013, is the first time that the three members of the civic team come from "modern" Liveries (those founded after the Second World War): Lord Mayor Fiona Woolf CBE from the Solicitors' Company, Sir Paul Judge from the Marketors' Company and myself from the Actuaries Company. Collectively, the 109 Worshipful Companies in the City give £44 million per year to charity, making them one of the major charitable funding sources in the country. Whilst the Actuaries Company's endowment isn't as large as some of the more historic Companies, we manage to distribute £155,000 each year, of which we designate a reasonable sum in support of Maths education. Company networking also helps us launch initiatives, like the actuarial training program that I started running at Kumasi University in Ghana last year.

Actuarial science involves managing risk. Nobody can eliminate risk, but actuaries can help by creating contingency plans. In other words, we can't stop a tsunami, but we can plan what to do in its aftermath. Actuarial expertise should be used on any long-term project where substantial sums are involved. Actuaries are traditionally known for being employed by pension schemes and with so many schemes closing you would think there would be less demand for us. Yet we are a growing sector, with new areas becoming open to the profession. Lloyds of London, for example, employed only a few actuaries before its troubles in the 1980s and now employs over 200 actuaries. The plentiful employment in life insurance actually stunted the wider development of actuarial science. Fortunately, the next generation of actuaries will experience a greater scope of work.



Adrian's Badge of Office: "I chose for my Sheriff's coat of arms the motto Expectate Vitam, which means "expect the time of your life" - a pun on the work of actuaries. I also incorporated the shield of Royal Holloway College into the badge (bottom right)."



# ICT4D

Leading the way in using new technologies for development



ICT4D is a research area in which Royal Holloway plays a key role at an international level. This year our ICT4D group was named one of the Top Ten science and technology think tanks in a global survey run by the University of Pennsylvania. The group's aim is to conduct research into how new technologies can best be used to assist poor and marginalised people in their own development. The ICT4D Centre is multidisciplinary and unites 11 academics and 12 PhD students from the Departments of Geography, Computer Science, the Information Security Group and the School of Management.

Professor Tim Unwin founded the ICT4D Collective in 2004 to bring together people committed to undertaking the highest possible quality of research in the field of ICT4D, and to make the results of this available freely to the global community. The Collective has its own site [www.ict4d.org.uk](http://www.ict4d.org.uk) and a Facebook page with almost 2,500 members.

UNESCO honoured this ICT4D work by recognising Royal Holloway in 2007 with a UNESCO Chair in ICT4D, with Tim Unwin as the first Chairholder. The Centre was founded in 2009 and the following year hosted the largest academic conference in ICT4D, with over 500 delegates from around the world. On the back of this momentum, the group launched a Masters specialism in ICT4D which is embedded in the Masters in Practising Sustainable Development.

"This is our course for training practitioners and researchers who we hope will then go on to become future leaders with a strong ethical compass in this exciting new area of development work" says Dr Dorothea Kleine, Director of the ICT4D Centre. "Some stay on with us for a PhD, and the quality and dynamism of our PhD community is also highly recognised in our field".

Experts from the Centre act as advisers to policy-makers at an international level, including speaking regularly at high-level UN conferences. Since 2011, Tim Unwin has also been Secretary General of the Commonwealth Telecommunications Organisation. Dorothea Kleine and her co-authors are currently completing a major report for UNICEF, examining what ICT4D projects can offer for child-related development initiatives. In 2012 the group signed a memorandum of understanding with Lanzhou University in Western China, in order to facilitate staff and student exchange and collaboration.

The Centre was also recently involved in a major EU-funded project to build collaboration between European and African universities in ICT4D.

"We are known for the quality of our work and our specific ethos", explains Dorothea Kleine. "At the grassroots level, we stand for working with communities in participatory ways, working *with* people and not talking *at* them. In our academic communities and at the policy level, we are often that little bit more irreverent when analysing traditional top-down or technocentric development projects and a bit more agile in our thinking. Our partners, from small NGOs, companies like Cisco to international organisations like UNICEF and UNCTAD, really value our distinct ethos. This, alongside the calibre of our work, is why they seek us out for collaborations."

Read on for a small selection of our projects in ICT4D and find out more about the ICT4D Centre at [www.ict4dc.org](http://www.ict4dc.org)



Dorothea Kleine discussing future ICT policy directions at the UN World Summit on the Information Society Forum in Geneva, 2013



ICT4D (Information and Communication Technologies for Development) researchers and practitioners aim to understand how and why ICTs can be used effectively to contribute to broadly defined 'development' agendas, with the intention of supporting people and communities to achieve their digital aspirations. The United Nations actively promotes ICTs as a powerful tool for economic and social development around the world.



Tech-entrepreneurs at BongoHive in Lusaka

### 'Tech hubs' in Sub-Saharan Africa

Andrea Jiménez, Management PhD student

People don't expect technological innovations to happen in Sub-Saharan Africa," says Andrea

Jiménez, "and there is a reason for that." Andrea is researching the growing phenomenon of technology and innovation hubs, spaces where people can collaborate, exchange knowledge, and start businesses and community projects. One of the biggest problems for software developers in developing countries is the lack of affordable broadband.

Andrea conducted fieldwork at BongoHive in Zambia, one of more than 80 'tech hubs' in Sub-Saharan Africa, to trace the story of the Zambia Draft Constitution phone app. The app is designed to support the process of developing a new constitution for the country by allowing users to submit comments. It went on to become the most successful project in the hub, just as Africa experiences a boom in mobile telecommunications.

"The Zambian government has offered to pay for the expansion of BongoHive," she says, "but the offer comes with the expectation that it will contribute towards ensuring that the government is seen to be democratic. The members of the hub are worried that they will be working for the government rather than concentrating on developing software for the community."

"If research like mine can show how innovations can happen in the Sub-Saharan context, and there are local computer scientists and technologists that not only have the capacities to innovate, but also intimately know local problems and how to reach local people, this will help the development of African innovation systems in general," she argues. "The next question is how the hubs can scale up and achieve sustainability."

### Digital inclusion for social inclusion in Brazil

Sammia Poveda, Geography PhD student

"I don't walk over that bridge any more. Two girls were raped there last month." Sammia Poveda is interviewing a student on a new type of IT training course in Brazil. "That's terrible," she says, "If you could, would you like to live somewhere else?" "No, not really", replies the student, "I like it here, I've lived here all my life." The course is run by CDI, an organization which argues that students should be able to use ICT as a tool for transforming the environments they live in and not simply for communication. If training does not promote critical use of the internet, then people will only use the technology for very limited purposes. Sammia explains, "I wanted to know if there is a link between this critical computer training and de facto critical use of computers?" Working in a participatory way, she developed a questionnaire with CDI to evaluate the effectiveness of their work. Observation and interviews were also carried out to complement the data. Early findings which compare the CDI programme with a more traditional course suggest that people undertaking the CDI course use the internet in a more open-ended and exploratory way. "I started off by thinking that the computer was the Medusa," remarked one student, "but after this course I realize that it is more like a kitchen blender. It's an appliance that is there to work for me."

Sammia says, "You can't expect someone, just because they are trying hard, to get far, because the environment may be very challenging. CDI tries to bring awareness that besides their own personal growth, students



Observatório de Favelas ("Slum Observatory"), a social organization in Rio combatting social exclusion

should seek changes to their social context and that these might be possible by working together." Sammia argues that there needs to be a change in the way that computing is taught - in schools in the UK as well as in the global South.

The academic staff who are part of the ICT4D Centre: Professor Tim Unwin (Geography), Dr Dorothea Kleine (Geography), Dr Kostas Stathis (Computer Science), Dr Lizzie Coles-Kemp (ISG), Professor David Simon (Geography), Dr Yingqin Zheng (Management), Dr Endrit Kromidha (Management), Dr Gwilym Eades (Geography), Dr G Harindranath (Management) and Professor David Grimshaw (Geography).



Using collage as a medium for communication

### Establishing trust across digital divides

Dr Lizzie Coles-Kemp, Senior Lecturer in Information Security

Although ICT4D is often associated with projects in the global South, many of the members of the ICT4D Centre conduct their research in challenging conditions closer to home, for example in and around prisons. Dr Lizzie Coles-Kemp recently completed two major collaborative projects focusing on disconnected communities. The first was designed to understand how families who have been separated by prison access online information which could help them to cope. "Having a family member in prison tends to make people more cautious about sharing and online communications

are often treated with suspicion," reports Lizzie. Her second project involved engaging with marginalized groups, such as young people considered to be at risk of offending, in order to understand how they perceive issues of privacy and consent in their interactions with ICTs.

Lizzie's team found that citizens from all demographics are interested in privacy and in managing their information meaningfully on-line and that the way that they use information is strongly shaped by life circumstances. This can be a problem when service providers need to engage hard-to-reach groups — the aim of 'digital by default' government policy is to move more support functions online — so Lizzie's team developed service design principles and disseminated them to government and third sector organizations. "Our key finding was that if you want citizens to engage with services online, you have to, as a service provider, communicate your values and your ethics, the principles by which you want the engagement to take place. Otherwise the assumption is that you are there to harvest as much data as possible and that you are not going to give the citizen any control over where that information goes."

"We found that there were lots of things that families wanted to communicate about, really everyday things, and there just wasn't a way for them to talk about everyday family life — the official prison visit was such a huge effort, such a big event," she says. "We worked with the families and an artist to generate a collage about their thoughts and feelings, about what they want to communicate but can't, and how isolated they feel. It became a very powerful intervention and is now used as a training tool across the country. It is also displayed inside the prison itself."



### Empowering Zambian women through participatory video

Tony Roberts, Geography PhD student

The Asikana Network is a group of young women in Zambia with ICT qualifications who are finding it hard to find work in a male dominated field. Tony Roberts used participatory video techniques to enable the group to discuss why women are

underrepresented in the technology sector and what the underlying causes are: where do the gender stereotypes come from and what would be needed to be done to change the situation. "There is an absence of women's voices in all levels of public discourse in Zambia," says Tony. "Participatory video enables excluded groups to break that silence to discuss their own situation and to rehearse resistance in a safe space."

Participatory video is a process of enabling excluded groups to make their own films. All of the filming and all of the editing is carried out by the participants themselves. The purpose is not the production of a film, it is the process itself: to create a space in which a group of people can research and discuss the inequalities that affect them and produce their own narrative in the form of a film, using that to generate movement for change. "I found that the women reported

increases in their self-esteem, their confidence, their sense of agency, their knowledge about women's rights, and they committed to work for change to improve their situation," reports Tony.

What was unexpected was that this particular group turned the cameras on the men. "Once they became confident with the cameras, they felt able to walk up to men and ask those direct questions that they would not otherwise have been able to ask them. There's something about holding the camera that gave them authority and power that they otherwise would not have had, and they used that opportunity to question the men about what they thought about women working in the technology sector, and what they thought the causes of those gendered work roles were." The men reported that the engagement with the film had stimulated them to consider their implicit assumptions.





Yingqin Zheng is researching Weibo, the Chinese Twitter-like blogging site

### Social media is changing the relationship between China and its citizens

Dr Yingqin Zheng, Lecturer in Information Systems, School of Management

“Despite state censorship and commercial manipulation, the growth of social media in China has expanded the boundaries of public debates and participation, and in some ways has reconfigured the relationship between the state and its citizens,” argues Yingqin Zheng. She has been conducting research to understand how Chinese Web 2.0 technologies, such as the Twitter-like platform Weibo, are affecting the development of civil society. “Cyberspace is a double-edged sword. There is, underlying it, a complex entanglement of multiple powers and interests, political and commercial,” she says. One area of Yingqin’s research is concerned with emerging ICT-enabled practices and collective actions which could be of significance to the emergence of cyberactivism in China. One of her studies examines the role of social media in citizen participation in public affairs, which ranges from expanding information channels, voicing public concerns, to exposing social injustice and holding authority accountable.

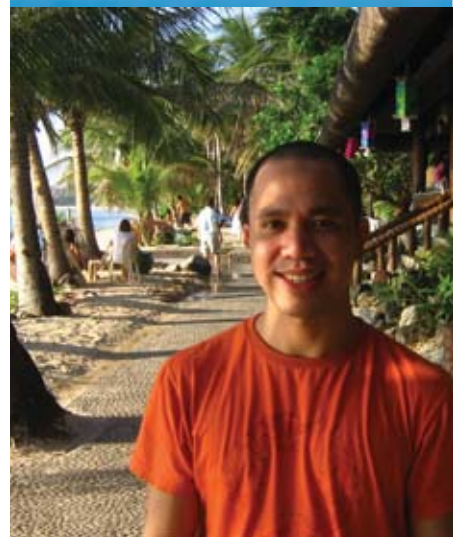
Another project is a case study of the online campaign for Free Lunch for Children (FL4C) which has established school kitchens in over

two hundred rural schools. The campaign is an example of a new form of organizing in China: a charitable campaign based on social media. FL4C is one of the earliest and most successful Web 2.0 campaigns and was launched with few resources and little government support. Started in April 2011 by a group of journalists, FL4C has raised more than £5.7 million in two years, and supports over 30,000 pupils. The organisation utilizes Weibo and other social media to launch and promote the campaign, interact with donors and the public, recruit and co-ordinate volunteers across China, and to take in donations using e-commerce transaction digital applications. The project works to enhance transparency by constantly updating financial information and even requires sponsored schools to self-report itemised daily expenditure on school lunches through the Weibo platform as part of the monitoring process. These practices enabled FL4C to quickly establish trust and legitimacy with the public, enrolling a wide range of alliances and offer support both online and offline. FL4C mobilized significant public participation and resources within a short period of time.

### Help us change the world, by supporting future leaders

Every year, for every student joining our course from a developing country, there are a dozen applicants from income-poor countries who meet our high standards and receive offers of a place, but who are not able to come due to lack of funds. In the past, generous support from alumni has allowed students such as Nikos Dacanay from the Philippines to take up their offer of a place. Nikos is an accomplished ICT4D practitioner – he works with Burmese human rights activists on cybersecurity and co-authored the award-winning book, *Txt-ing Selves – Cellphones and Philippine Modernity*. He plans to go back to the Philippines to teach ICT4D and train other practitioners.

If you would like to explore options for supporting our students, please contact [Dorothea.Kleine@rhbc.ac.uk](mailto:Dorothea.Kleine@rhbc.ac.uk)



Nikos Dacanay



# The way we were...

2003

The College introduced its first online degree in 2003. From September, students in Classical Studies could study via an entirely online class and only had to come onto campus to sit their final exams. 2003 was also the year that the then Poet Laureate, Andrew Motion, took up the position of Professor of Creative Writing. This led to the introduction of two new joint degree programmes as well as a new MA in Creative Writing. He remains on the staff today and our Creative Writing programmes go from strength to strength.



Professor Andrew Motion teaching a class outside Founders



Helene Raynsford

Graduating this year were the singer-songwriter **Example** (Media Arts) and the Paralympian, **Helene Raynsford** (Biochemistry). Helene made history by winning Gold in the arms-only single sculls event at the Beijing Paralympics in 2008 - the first time rowing had been a Paralympics sport.

1993

In October 1993, the Bedford Library was opened in the centre of campus. Library provision for science students had been in a series of temporary cabins known as the Orchard Buildings since the merger and the campus was crying out for a new purpose built library to complement the historic Founder's Library, which had served Royal Holloway College since it opened in 1886. The new library provided study spaces and room for the collections to grow, but 20 years on the student body has outgrown the building and plans are currently being developed to build a larger library and student services centre on campus.



The Bedford Library



KT Tunstall

Students at College this year included the singer-songwriter **KT Tunstall** (Music & Drama) and the former Wasps, Harlequins and England rugby player, **Nick Greenstock** (Geography). KT Tunstall released *Invisible Empire* // Crescent Moon, her fourth studio album, in June to great acclaim.

1983

The partnership agreement between Royal Holloway and Bedford was signed in 1982, so by 1983 planning for the new college was well underway. The name of the new College was a heated area of discussion with various suggestions put forward including New College and Queen's College, but after the Queen Mother (Patron of Bedford College) expressed her wish that the 'Royal' title should remain, Dorothy Wedderburn (Bedford's Principal) suggested Royal Holloway and Bedford New College, which was accepted. A Joint Standing Committee was formed in March 1983 and plans were drawn up (and altered several times) for new buildings on the Egham site to accommodate the increase in students and staff.



Signing the merger agreement



Mark Strong

Graduating this year were **Jayne-Anne Gadhia** (History), now Chief Executive of Virgin Money, whilst undergraduates included the future film actors **Mark Strong** (Drama & Theatre Studies) and **Jeremy Northam** (English), and the ITV newsreader **Mary Nightingale** (English). Mark Strong appeared in *Zero Dark Thirty* and *Tinker, Tailor, Soldier, Spy*.

# Looking back at College life from 10, 20, 30, 40, 50 and 100 years ago

1973

This year saw an eventful RAG week at Royal Holloway College. There was a world record attempt from Mark Hetherington, Iain Ross and Geoff Lambert, who played snooker continuously for a total of 176 hours over 350 frames, beating the previous record by 6 hours (although there was some question over whether it would be made official as Mark had to drop out for the last 8 hours – the archives don't tell us whether they made it into *The Guinness Book of Records*). A poetry reading marathon also took place which lasted 100 hours. Between them they raised £331 toward the RAG total.



350 frames and still going strong



Professor John Broome

Graduating this year was the philosopher and economist Professor **John Broome FRSE FBA** (Philosophy), who is now White's Professor of Moral Philosophy at the University of Oxford, arguably the most prestigious chair of moral philosophy in the world.

1963

1963 saw the beginning of big changes both inside and outside the Colleges. The Robbins Report was published in September of this year which called for a huge increase in higher education opportunities to meet growing demand. At Bedford and Royal Holloway Colleges this meant admitting male undergraduates to study for the first time. Both Colleges benefitted from government funding for the expansion and Royal Holloway received an anonymous donation of £250,000 to build a second residence for men. It wasn't just the buildings which needed updating to accommodate the male students, but academic life as well – new courses were introduced and existing ones reorganised.



According to Phillip Larkin, sex began in 1963. "Between the end of the "Chatterley" ban and the Beatles' first LP."



Angela Mason CBE

Undergraduates this year included the civil rights campaigner, **Angela Mason CBE** (History), who led the Equality and Human Rights Commission and the gay rights organisation Stonewall. Angela is now Chair of The Fawcett Society, the organisation which campaigns for women's rights.

1913

The new purpose-built buildings for Bedford College in Regent's Park were officially opened by HM Queen Mary in July 1913. The Queen was shown around the buildings by the Principal, Miss Margaret Tuke, and the occasion caused great excitement amongst the students, who practiced their curtsies. The move gave staff and students much more space to live and work, and lectures were sometimes taken out into the grounds. The buildings continued to be extended and rebuilt throughout the 70 years that the College spent there, especially following extensive damage caused by wartime bombing.



Queen Mary outside the Tate Library at Bedford College, 4 July 1913



Dame Freya Stark

Graduating this year was the writer and traveller **Dame Freya Stark** (Intermediate in Arts), who went on to serve as a nurse on the Italian front during the First World War. She became legendary for her epic travels in the Near and Far East and in Asia. Her travel writings are a memorial to her remarkable achievement as a solitary female traveller.

# The Higgs particle

The discovery of the Higgs particle in July 2012 provided the answer to a question that had remained unanswered for almost 50 years: where does the mass of elementary particles come from? The Centre for Particle Physics at Royal Holloway is one of the research groups that contributed to this achievement.

These days everyone has heard of the Large Hadron Collider (LHC), located in the European National Laboratory for Particle Physics (CERN) in Geneva, Switzerland. By making high energy protons collide, this circular 27 km long underground particle accelerator enables researchers to study the elementary particles of nature, from the electron to the top-quark, and how they interact with one another. Two specialised particle detectors – known as the ATLAS and CMS experiments – help scientists study the debris from the collisions. Each detector is installed at a separate location in the ring.

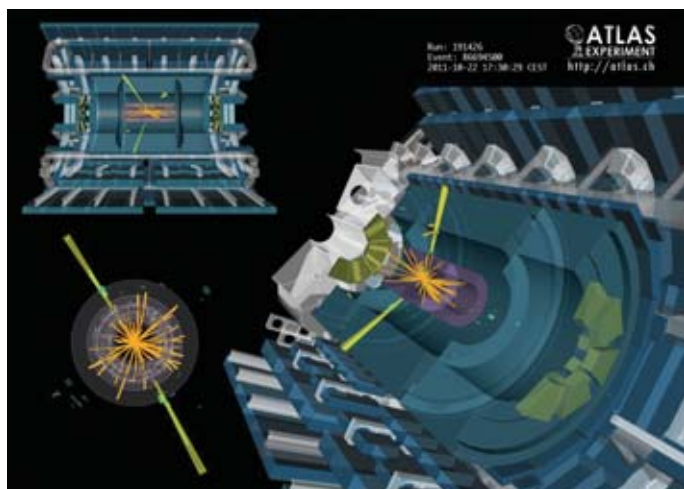
More than 20 years ago, Royal Holloway's Centre for Particle Physics (CPP) was a founding member of the ATLAS experiment, a large collaborative project which today comprises 3,000 physicists from 180 universities and research laboratories in 40 countries. Royal Holloway physicists have contributed to

the ATLAS data filtering system (known as the "trigger") that does the live selection of the data. From a staggering 20 million collisions every second, the system selects 400-500 interesting ones to be recorded and analysed later. The group's research has focused on the Higgs particle, the study of the top-quark, the search for new exotic particles and extra space-time dimensions, and statistical methods for data analysis in particle physics. A third of the group's approximate 20 members (including PhD students, post-doctoral research assistants, an engineer, and academic staff) spend a few years at a time at CERN, while the remaining members are based on campus.

The Standard Model, an otherwise very successful mathematical theory that summarises our knowledge of elementary particles and how they interact with one another, did not, in its original form, allow any elementary particles to have nonzero mass. While a few elementary particles are indeed massless (i.e. photons, the particles in light), most are undoubtedly not. Hence the big question: How do we account for the masses?

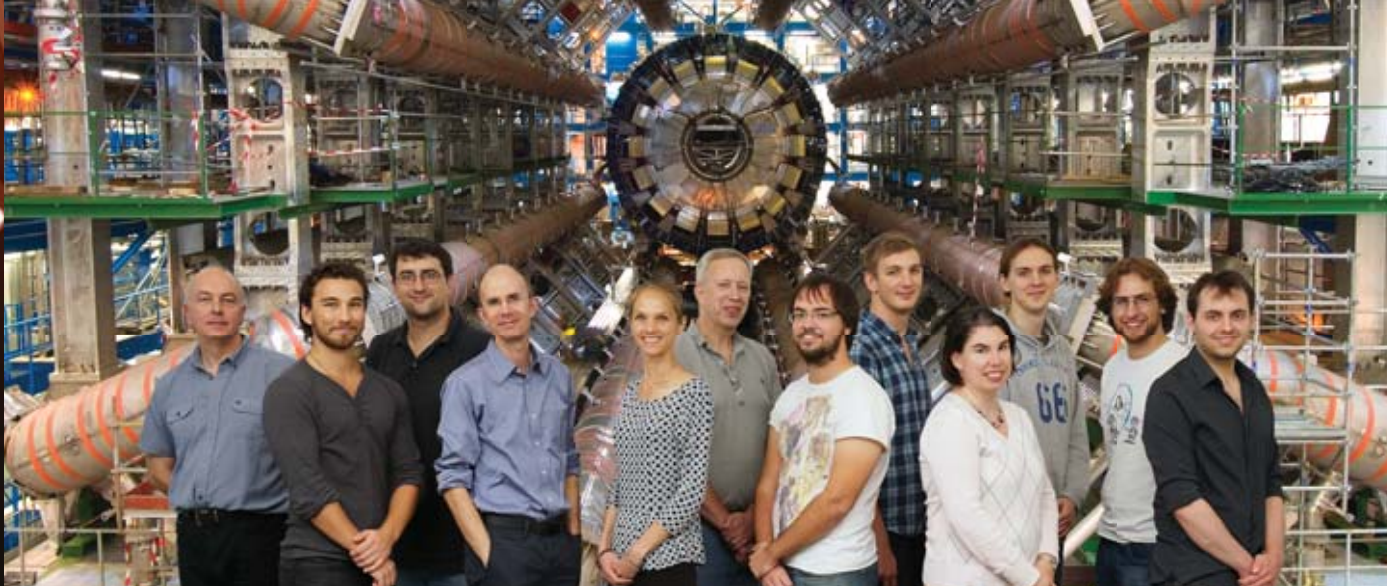
Several physicists, sometimes referred to as the "gang of six" (Higgs; Englert and Brout; Kibble, Guralnik and Hagen), worked out a possible theoretical solution to this conundrum. They published their work within a ten-week period in the summer of 1964. In it they proposed one unavoidable consequence of the "mass mechanism". Nature had to have a new particle with certain specific properties, in addition to every elementary particle observed up until then. Over the years, this predicted particle became known as the Higgs boson, and observing it (or alternatively, establishing once and for all that it didn't exist) became key in the quest to understand the origin of mass.

Higgs particle production occurs incredibly rarely, making its experimental detection tremendously difficult. The LHC physicists rose to the challenge, with the help of the cutting-edge accelerators and detectors at CERN. On the 4th of July 2012, the ATLAS and CMS experiments announced the discovery of a new particle found in their data. After sifting through the data they had accumulated in the preceding 12 months, both experiments confirmed that they had independently found strong evidence ("5 sigma", or less than 1 in a million probability of the result being due to a chance fluctuation) for the production of a new particle in the recorded collisions.

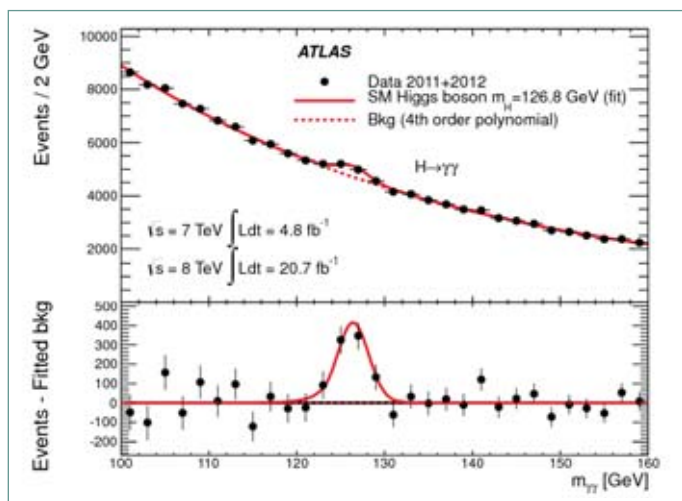


Computer display of a collision recorded in the ATLAS detector, consistent with the production of a Higgs particle. Once produced the Higgs particle rapidly decays, giving birth to two energetic photons (indicated by the two long yellow markers in the figure). The ATLAS detector, shown here in a cutaway view, is about the "size of a cathedral": approximately a cylinder 44m long and 22m diameter.





Members of Royal Holloway's ATLAS group in front of the Large Hadron Collider



Mass peak – evidence in the data collected in the two-photon decay mode that contributed to the discovery of the Higgs particle with a mass of approximately 125 GeV.

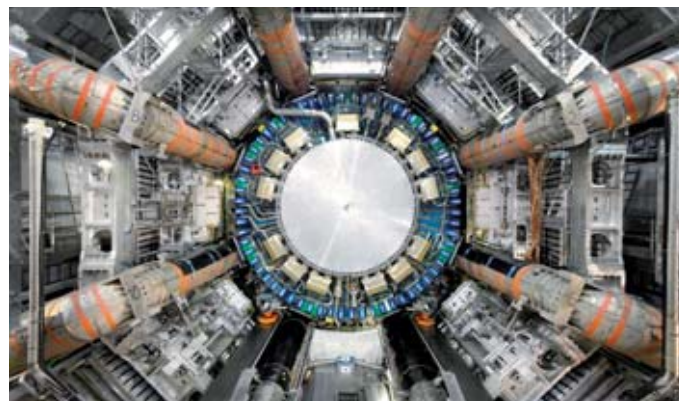
Discovery of this new particle at CERN, which we now know behaves consistently with what is expected of a Higgs particle, gave us a quantum leap in our understanding of how Nature works at its most elementary level. For the first time, we can claim to understand how elementary particles actually can have nonzero mass. The ATLAS and CMS collaborations of physicists have been awarded several prestigious prizes for their discovery. In October, François Englert and Peter Higgs received the 2013 Nobel Prize in physics for their original insight.

Dr Pedro Teixeira-Dias, leader of the ATLAS group at Royal Holloway, said “It’s been the most amazing conclusion to a long journey. The announcement of the discovery finally set in motion the settling of a major fundamental question in physics, which had been puzzling physicists for the last five decades. The question was ‘How is it that elementary particles actually get

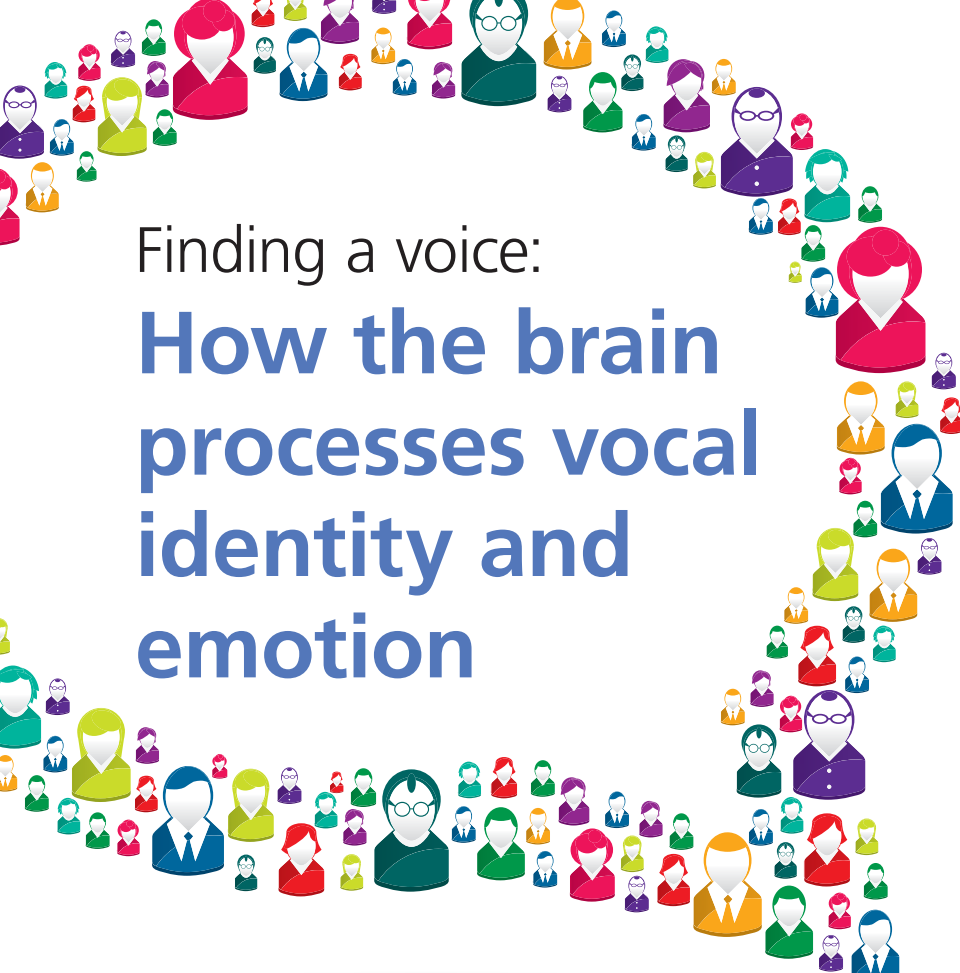
their mass?’ To put the relevance of this question in perspective, the origin of other basic properties of elementary particles – their electric charge, for instance – has been well understood for a while.”

To celebrate the first anniversary of the discovery, this year’s Summer Science Exhibition at the Royal Society in London included an exhibit on ‘Understanding the Higgs boson’, which featured several contributions from the Royal Holloway group, among others. PhD student Robert Cantrill, who worked on the Higgs discovery, said, “I feel extremely privileged to be involved and to work with some amazing people on this very historical research.”

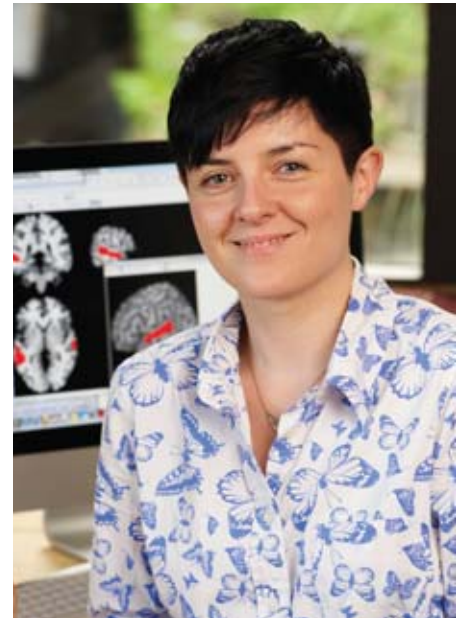
The journey of the LHC into the heart of matter is far from over. The Standard Model cannot be the final theory of elementary particles, as it does not provide answers to some remaining major questions. For example: ‘What is dark matter – which constitutes about 25% of the contents of the Universe – made of?’ and ‘How has the large asymmetry between matter and anti-matter in the Universe arisen?’ The LHC is currently undergoing upgrades to reach higher energy and higher intensity proton beams. When it resumes collecting data in 2015, it may well provide answers to these or other major questions.



The centre of the ATLAS detector.



# Finding a voice: How the brain processes vocal identity and emotion



By Dr Carolyn McGettigan,  
Royal Holloway Vocal  
Communication Laboratory

“  
T’ain’t what you  
say, it’s the way  
that you say it  
”

**T**he voice provides a powerful channel for expressing identity. It conveys information such as gender, age and place of birth, but crucially, it also expresses who we want to be. Consider the difference between talking to a friend on the phone, talking to a police officer who’s citing you for a parking violation, or speaking to an infant. While the words we use probably vary in each setting, the tone and style with which we deliver our words can also differ dramatically. We wanted to find out more about this process and how the brain controls it.

In our recent study, conducted in collaboration with colleagues at University College London, we explored the brain regions involved in performing spoken impressions of accents and impersonations of familiar individuals. Using functional magnetic resonance imaging (fMRI) to measure brain activity, we asked participants to repeatedly recite the opening lines of a familiar nursery rhyme in one of three ways: with their normal voice, by impersonating individuals, or by impersonating regional and foreign accents of English.

Our results demonstrate that when a voice is deliberately changed, the left anterior insula and inferior frontal gyrus (LIFG) of the brain—areas

long associated with control of spoken language output—show stronger activation than when speakers use their normal voices. We suggest that the activations reflect the speaker’s need to modify breathing patterns and the physical shaping of the vocal articulators (i.e. teeth, tongue and lips) in order to sound like someone else. When comparing the brain responses for impersonations of specific individuals against accents, areas in the left and right temporal lobes of the brain showed enhanced responses. Past research has found that listening to voices activates regions of the temporal lobe, but ours is the first study to investigate the brain regions involved in controlling vocal identity during speaking. We learned that, during the impressions of specific individuals, these regions worked together with the frontal lobe sites to execute the spoken impersonations.

Results from our study were published this year in the *Journal of Cognitive Neuroscience*, and we have already begun to expand upon our work. None of the original study’s volunteer participants were professional impersonators. Regardless of how convincing the subjects’ impressions were, the observed activations reflected the brain systems supporting their attempts at impressions.

The natural next step for us involves running the study with a group of professional voice artists. With the professionals, we can focus on questions about brain function in people who have exceptional control over their vocal system. Now, with a grant from the Royal Society, we will also look at vocal imitation in more detail in “non-expert” volunteers attempting to produce speech sounds from other languages. Learning to produce new sounds is a central aspect of language acquisition, and it is relevant to clinical settings, such as speech therapy following a stroke or head injury.

### Is he having a laugh?

Our research extends beyond spoken language to consider how the brain processes emotional vocal sounds, such as laughter and crying. A central part of our work is to explore factors affecting our interpretation of these sounds. It turns out that we spend much more time laughing during everyday conversations than we do in ‘formal’ humorous settings, like watching a comedy film or listening to jokes. The social laughter of conversation also happens to have different acoustic properties to the belly laughs of intense amusement.



Figure 2: Shading in orange shows brain regions that gave stronger activation when listening to posed laughs compared with authentic laughter. These regions are known to be involved in mentalizing – that is, trying to work out the thoughts and intentions of other people. The circled region was more active in participants who were better at telling real and posed laughs apart.

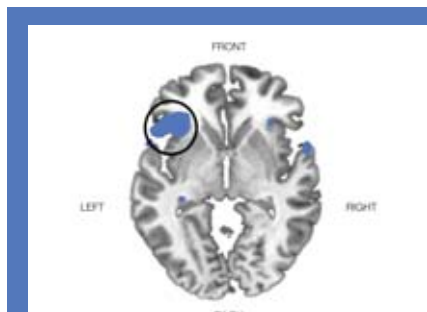


Figure 1: Shading in blue shows brain regions that gave stronger activation during impersonations than during normal speech. The images shows a slice through the brain, viewed as if looking down upon the brain from above. The circled activation includes parts of the left inferior frontal gyrus and insula. These regions showed enhanced interaction with auditory parts of the brain when participants attempted impersonations of specific familiar individuals (compared with performing general accents) – we suggest this reflects participants using an “auditory image” of that person’s voice to guide their impersonation.

Using fMRI, the study explored the brain responses of participants as they listened to two different types of laughter. Half of the laughs were recorded from people watching their favourite funny YouTube clips, while the other half were posed laughs made by the same people. In the fMRI experiment, the participants heard both sets of laughs, interspersed with other emotional and non-emotional sounds. None of the participants knew that the study was about laughter perception; they were asked simply to listen carefully to the sounds that were played. The results illustrated clear differences between the brain’s responses to genuine and posed laughter. Interestingly, we observed a set of activations in the frontal lobe at the midline of the brain, where the two hemispheres meet. Regions in this part of the brain showed stronger responses during posed versus genuine laughter. This suggests that the participants were automatically engaging “mentalizing” processes in an attempt to work out the emotional states and intentions behind the less genuine laughter. Some of these regions were engaged more strongly in participants who, when tested after the scan, were more accurate at distinguishing between genuine and posed laughs.

We constantly use signals like laughter in our daily interactions. Understanding how we produce and perceive these emotional cues is an important aspect of building a model of the social brain, especially as it relates to the role

of the voice in forming and maintaining bonds between individuals.

### Understanding individuals to understand the population

Why do some people find it particularly difficult to decipher accented or noisy speech signals? How does the brain of an expert beatboxer control their extraordinary vocal capabilities? These questions represent a central theme of our work: an interest in understanding individual differences in the performance of tasks. As cognitive scientists, we often focus on building models of cognition by describing the behaviour of groups of people. However, we can gain additional insights by looking at differences among individuals within these groups. Variability in perception is of great importance in particular clinical contexts, such as when the recipient of a cochlear implant (a type of hearing aid) learns to adapt to the auditory information received from the device.

Our overarching aim is to assert the study of vocal communication as an important part of the social neuroscience literature, rather than a subject limited to the fields of auditory perception or linguistics. We look forward to developing this work here in the Department of Psychology at Royal Holloway.

You can read more about our research at [www.carolynmcgettigan.com](http://www.carolynmcgettigan.com).



Movers & Shakers...

# The Designers

Alumni making their mark in the design world



## **The Pottery Designer - Emma Bridgewater CBE** **BA English, 1983 Royal Holloway College**

It all began with the search for the perfect present. Emma Bridgewater could not find a piece of pottery that would look at home in her mother's cosy kitchen. Having discovered this gap in the market, Emma sketched some shapes and patterns and set out to find a maker in the Potteries. Within a few months, her designs were snapped up by Liberty's, Harrods and The General Trading Co. and were being hand made in a small back street factory in Stoke-on-Trent.

Looking back, Emma recalls growing up in Oxford, the eldest daughter in a large family. She continues to draw inspiration from her mother Charlotte's memorably welcoming kitchen. One wall of the room was taken up with a large dresser, which gave a complete portrait of family life – Victorian meat plates and French café porcelain jostling with christening mugs, piles of mismatched plates, and Bovril mugs stuffed with felt tip pens, library cards and screwdrivers.

After graduating from Royal Holloway in 1983, Emma went to work for knitwear designers Muir & Osborne. There she became involved in every aspect of the small fashion company. This experience, combined with her quest for creating charming, cheerful pottery, planted the seeds she needed to launch her own business in 1985.

Shortly thereafter, she and her future husband Matthew Rice met while selling their products at London trade fair Top Drawer. The couple married in 1987, and their early family life - from their children to their chickens - became the inspiration for the Emma Bridgewater business. As the company expanded, Emma Bridgewater Ltd bought the business that had been manufacturing Emma's range of mugs, bowls and plates. They soon outgrew the works and moved to a sprawling Victorian factory on the banks of the Caldon Canal.

Emma and Matthew still design every piece of pottery themselves, and they are very proud of the fact that it is all made by hand, using an adapted 'recipe' for earthenware that was invented by Josiah Wedgwood 250 years ago. Today, Emma Bridgewater remains a family business employing over 200 people in Stoke-on-Trent, and it is pleased to contribute to Staffordshire's heritage by helping to keep the area's traditional skills alive. In bucking the trend of the decline in the potteries in the area; Emma Bridgewater has become the only large manufacturer to produce its entire range of pottery in England.

Fittingly, Emma serves as a trustee of the National Garden Scheme, Chairman of the English Heritage Foundation and a trustee of the historic Arkwright Mill in Cromford, Derbyshire. She has also been recently appointed as ambassador for UK industry championing manufacture in the UK as part of the Government's Make it in GB campaign. In recognition of her as an entrepreneur and champion of UK manufacturing, Emma has received several accolades, most notably a CBE for Services to Industry in 2013.



## The Shoe Designer - Rupert Sanderson

**BSc Geography, 1989 RHBNC**

In a moment of madness, or divine intervention, Rupert Sanderson resigned from a disastrous career in advertising to learn how to make shoes at the world-renowned Cordwainers College in East London. During the summer break of the two year course, Rupert rode a motorbike to Italy to visit as many shoe factories, tanneries and last makers as he could. In a very short time he was working in Italy, firstly for Sergio Rossi and then Bruno Magli. Rupert is very proud to have been able to work with the founders and their families of both these companies before they were bought by larger luxury goods companies – it has stood him in good stead with the close-knit Italian shoe-making community.

Rupert Sanderson founded his eponymous company after returning from working in Italy in 2001. His design philosophy is simply 'less is more'. Avoiding

augmentation and over-dressing the foot, he concentrates on perfecting the line, volume and material to flatter and lengthen the leg, making women feel sexier. His inspiration comes from the materials themselves: from the sensual curve and silhouettes of the lasts and heels, to the quality and finish of the best leather and fabrics.

By way of reinforcing his design principles, in July 2006 Rupert bought a controlling interest in the Italian factory he had been working with since his first collection. The skills and know-how built up over generations had to be safeguarded to ensure every pair of Rupert Sanderson shoes were the best they could possibly be. He has two London stores located in Mayfair and Knightsbridge and his shoes are available in over 100 department and specialist stores in fashion capitals around the world. In March 2010 Rupert opened an Asian flagship store in Central, Hong Kong, followed closely by the opening of his first Paris store and press office located in the Palais Royal. In March 2013 he opened a second Hong Store in the Elements Mall, Kowloon.

In 2008 Rupert Sanderson founded Fashion Fringe Shoes with Colin McDowell, with the aim of discovering and nurturing a new range of design talent.

Rupert Sanderson was awarded Accessory Designer of The Year at the British Fashion Awards 2008.

Shortly afterwards in February 2009, Rupert Sanderson was also awarded Accessory Designer of The Year at the Elle Style Awards. This award was voted for by the public as well as an industry panel and stands to highlight Rupert's rise in the fashion world.

Since Autumn/Winter 2009, Rupert Sanderson has designed the shoes for Karl Lagerfeld's main line collection. Rupert is now set to collaborate with some other big names in the fashion industry, from Parisian haute couturier, Maxime Simoens to young British talent, Osman Yousefzada.

Over the past decade, Rupert Sanderson has built up a loyal celebrity fan base, including stars such as Kate Moss, Astrid Berges-Frisbey, Gwyneth Paltrow, Freida Pinto, Keira Knightley, Kate Middleton and Emma Watson.

For Spring/Summer 2013 Rupert Sanderson launched his first handbag and sneaker collections. Inspired by his childhood music bag – the 'Music Bag' collection includes four key styles that will be reworked each season. To compliment his obsessive passion with the Italian craft of shoe-making, every pair of Rupert Sanderson shoes is named after a Daffodil. How very British...



# The Curiosity Project

## Our five year plan to create an enduring legacy

We are proud to present The Curiosity Project, our £25-million fundraising campaign to strengthen and secure the College's reputation as a crucible of free thinking and informed curiosity across a diverse range of subjects. Four key initiatives comprise Phase I of The Curiosity Project: renovating 11 Bedford Square, bolstering sport, building a new library and establishing a robust internship fund. Through an ambitious construction and development programme, we will create the optimal environment in which to nurture enquiring minds and to develop the global outlook, entrepreneurial spirit and social conscience of our students and staff.

### A revitalised London centre and alumni club room

Our circa 1780 Grade 1 listed building at 11 Bedford Square begs to be renovated and re-imagined as a creative centre, with revitalised teaching spaces. In addition to providing space for departments like Media Arts and Creative Writing, 11 Bedford Square will also become the 'nerve centre' of The Poetry Archive - co-founded by our own Sir Andrew Motion, this unique web-based resource makes poetry more widely accessible, relevant and enjoyable to all.

Alumni will enjoy access to these excellent new facilities, just a stone's throw from the British Museum. Supporters will also be welcomed through our doors to see how ideas and inspiration are flourishing within. We're particularly excited about the possibility of creating a new London club room in Bedford Square, to honour the merger that joined Royal Holloway and Bedford New College in 1985.



Our London facility, 11 Bedford Square



A new third generation (3G) football and rugby pitch will be installed

### New sports facilities to reflect our Olympic credentials

Back on the main campus, we have approved a sports development plan that reflects our Olympic credentials and contributes to the health and wellbeing of the entire campus community. We want to offer a range of facilities and activities that will encourage all students to adopt active lifestyles and other healthy habits - for life. At the same time, we remain dedicated to fostering the Olympic aspirations of our elite sportsmen and women by ensuring the long-term health of our Student Talented Athlete Recognition Scheme (STARS), a scheme that awards bursaries to our extraordinary student-athletes.

One of our main sports priorities is to install a new third generation (3G) football and rugby pitch, a first class playing surface for our competitive teams, not to mention those who just want to get fit or have bit of fun. The sports development plan also involves an overall upgrade to our sports hall. Our new facilities will be made available to the local community, including schools, sports clubs, Saturday and Sunday league teams and our corporate partners. Supporters at every level will take pride in the winning achievements of our students and alumni, who include inspirational performers such as triple Paralympic gold medalist, Sophie Christiansen OBE.

## A new kind of library is taking shape

Our third key initiative underpins the building at the heart of every educational institution: the library. Plans for this landmark building will stretch perceptions of what a library can be and do. Extensive use of glass will frame and reflect views of Founder's, while drawing light into the heart of the library, and its fractured roofline will echo the organic folded roof of the Windsor Building next door. These thoughtful design features will enable the library to sit comfortably in its historic setting.

Slated to be open 24/7, the library will become a hub for campus life, furnished with a mix of areas suitable for quiet, individual study, as well as spaces conducive to collaborative learning. The Careers and Employability Services will be situated near the main entrance, signalling our on-going commitment to helping students and recent graduates achieve their career ambitions. They will host a new Employer in Residence scheme and will expand their innovative employability enhancement activities with student clubs and societies through the Royal Holloway Passport Award. College Archives and Special Collections and the team that looks after them will also find a home in the new library.

Other amenities will include: access to a campus services team available to support registration and deal with course administration; an indoor street lined with storefronts such as a bookshop and café; electronic signage advertising jobs, internships and other placement opportunities; gallery space to showcase items from the Collections that illustrate Royal Holloway's rich history.



An impression of the new library as seen from Founder's

### The Cabinet of the Curious

Our trustees for The Curiosity Project are:  
Tony Hulatt (Chair), Brian Angers, Tony Askew,  
Mark Brett-Warburton, Sophie Christiansen, Maire Davies,  
Adrian Hall, Henry Pearson and Lavinia Sealy

## Providing a launch pad for success

The Curiosity Project's fourth initiative will open doors between brilliant students and cutting-edge companies. All too often, financial realities prohibit gifted students from seizing promising internship opportunities. Similarly, many exciting young companies can't afford to take advantage of the bright ideas that interns can bring. Our solution: to raise money for a £1 million Ignition Fund.

The Ignition Fund will enable talented students to take up internships in the UK and overseas, and relieve small businesses, start-ups and not-for-profits of the burden of internship expenses. Each year, we will designate approximately a substantial sum from the Ignition Fund to support interns and cover internship costs for companies. Individuals and companies who share our vision can partner with us by providing funding or internship opportunities of various scope and duration. Our supporters can benefit by receiving access to the incubation services and facilities we offer to local companies and by gaining access to businesses and organisations in markets they are looking to break into.



Through The Curiosity Project, our friends and alumni can join together to help move Royal Holloway from strength to strength. There are funding opportunities at every level - from naming our 3G pitch and sponsoring individual rooms and study spaces to buying a shield for the pitch hoardings or a brick for the new pathway connecting the library and Founder's Building. We have a lot of work ahead, but we are confident in our cause and your goodwill. Have we piqued your curiosity? If so, please contact us to learn more about a specific initiative or to discuss how you might like to become involved.

**To discuss funding opportunities, please call our Director of Curiosity, Sally Burton-Graham on 01784 276 413 or email [Sally.Burton-Graham@rhbc.ac.uk](mailto:Sally.Burton-Graham@rhbc.ac.uk)**



# The Bedford Society

The Bedford Society has organised and promoted three events since its inaugural lecture and reunion in April 2013.

Dear Bedford Society members,

As the Acting Chair of the Bedford Society Committee, I am writing to thank all our enthusiastic members who have supported the new Bedford Society this year. More than 500 people came to the launch of the Society at Senate House in April and to hear Dr Lawrence Goldman, the Editor of the *Oxford Dictionary of National Biography* talk about members of Bedford College who appear in the *Dictionary*. It was the only time I have been in the Beveridge Hall when there was standing room only! And then in September this year we were able to hold a meeting in our old buildings (now the home of Regent's University) and 300 alumni came to a reception, to hear Professor Joe Mordaunt Crook talk about the creation of Regent's Park. We have been extremely grateful for all the feedback that we have received following these events. Please keep looking at the Bedford Society webpages and tell us what you think. There will be a second newsletter next spring.

Meanwhile, we are formulating some very interesting plans. In the first place we will be holding a library talk, reception and supper at the University Women's Club in South Audley Street on 5 February 2014. On this occasion (which is planned as more intimate than our previous events and is limited to 60 guests), Dr Deirdre Palk will talk about a cache of letters which were sold for £25 in a London sale room a few years ago. These letters (175 of them) were written by Meg Smith, a student in the Chemistry Department of Bedford College in the 1930s, to her fiancé in Luton. The letters raise interesting questions about the options and opportunities available to women graduates in the years immediately before the Second World War. And in the summer we hope to have a talk about the art works that used to hang on the walls of Bedford College including, of course, the notable paintings which comprised the Herringham Collection.

Many of you know already that RHBNC has a base in Bloomsbury at 11 Bedford Square, opposite the house in which Bedford College was founded in 1849. The College has exciting plans for restoring this splendid building to a state closer to its original appearance, thus providing teaching space for Media Arts and Creative Writing as well as an alumni club room. Please see pages 26-27 for more details about these plans. Work will begin in the summer of 2014 and we look forward to involving many of you in this project.

So thank you for getting the Bedford Society off to such a great start. I look forward to seeing many of you at further gatherings and events in the year ahead.

**Professor Caroline Barron**

Emeritus Professor of the History of London, Bedford College and RHBNC 1968-2005

Our website is [www.rhbnc.ac.uk/alumni/thebedfordsociety](http://www.rhbnc.ac.uk/alumni/thebedfordsociety)



The back of 11 Bedford Square leading to the garden, the proposed home of our new alumni clubroom

## Bedford College in Regent's Park

### Lecture by Professor J. Mordaunt Crook, 30 September 2013

The evening of Professor Crook's talk at Regent's College was laced with nostalgia as Bedfordians visited the scenes of their youth. There were tours of the buildings and then the tour de force – Joe's lecture. He concentrated on John Nash's Regent's Park, the evolution of the plan and the architecture of the terraces and villas: 'posthumously Palladian' or 'Hollywood baroque'? There were surprises such as the influence of Prime Minister Spencer Perceval, the inspiration Nash drew from Paris and the bleak image of the Inner Circle as a coal depot in 1942. It was 32 years since Professor Crook had given a lecture in that theatre (he arrived at Bedford College as a Tutorial Research Fellow in 1962 and is now Professor Emeritus of Architectural History at Royal Holloway and Bedford New College). How fitting it was that he returned to delight the Bedford Society with all his customary wit and sophistication.

### Dr Penelope Hunting

BA History 1969, PhD Architectural History 1979



Professor J. Mordaunt Crook  
Photo: Ann Filton (History, 1974)

# Class Notes

Thank you to everyone who has shared their news with us. Class Notes can be emailed to [alumni@rhbc.ac.uk](mailto:alumni@rhbc.ac.uk) or sent to Class Notes, Development Department, Royal Holloway and Bedford New College, Egham, Surrey TW20 0EX.

The Editor reserves the right to edit or omit submissions and cannot be held responsible for the factual accuracy of Class Notes content.

1946

## Dorothy Rogers (née Pitman)

French with Latin, Royal Holloway College – Dorothy is very much retired and has three adult grandchildren. She is still in touch with Brenda Wood (née Hitchcock), who read French and Latin in her year. Greetings to any other contemporaries.

1948

## Lore Segal (née Groszmann)

English, Bedford College - Lore's new novel is entitled *Half the Kingdom*, see also the Alumni Books page in this issue.

## Sonja Zentner

French with German, Bedford College - Sonja was delighted to learn of the launch of the Bedford Society and to see its inaugural meeting last April so enthusiastically attended. She looks forward to following its development.

1949

## Mary Woolman (née Plummer)

General Science, Bedford College - Mary remembers her happy and eventful days at Bedford College. Despite living with spina bifida, she has had an extremely interesting life, including 16 years studying in East Africa. She welcomes letters via the Alumni Office from anyone interested.

1954

## Marika Blandin (née Pennington)

Botany, Bedford College - Marika recently translated the French text of the *catalogue raisonné* of the works by the French artist Gaston Balande (1880-1970), her husband's cousin. Volume one was published in September 2012 by the Association des Amis de Gaston Balande and volume two is in preparation.

1955

## Dr Valerie Galton (née Hamilton)

Physiology, Bedford College – For 52 years, Valerie has been a full-time faculty member of Dartmouth Medical School in the USA, where she has been doing thyroid research (supported by the National Institutes of Health), teaching endocrinology, running graduate programs and mentoring graduate students. She has no plans to retire, but for relaxation she keeps and rides horses, hikes and skis.

1956

## Reverend Jane Durell

Sociology, Bedford College – After graduating, Jane

gained her Cambridge Certificate in Religious Studies and then her Lambeth Diploma of Student in Theology (STh). She went on to serve the church for 28 years and in 1994 was among the first to be ordained a priest in Norwich. Bedford College stood her in good stead, she says.

## The Lady Heseltine (née Williams)

French and German, Bedford College - Lady Anne Heseltine is currently a trustee of The National Gallery, London, a trustee of the academic art journal *The Burlington Magazine* and a Fellow of the Ashmolean Museum, Oxford.

1957

## Ruth Cooke

History, Bedford College – Ruth is active leading her local meditation group and tending her garden. She is still in contact with fellow ex-residents of Reid Hall.

1959

## Jay Dean (née Burleigh)

Chemistry, Bedford College - Jay is enjoying being granny to two teenagers and really appreciates ongoing contact with old Bedfordians.

## Iris Litchfield

Mathematics, Royal Holloway College - Iris has just completed recording *Life's Journey*, her second CD of solo piano compositions. She has now recorded five CDs in the USA. Visit her website at [www.irislitchfield.com](http://www.irislitchfield.com).

## Ann O'Grady (née Buckley)

German with French, Royal Holloway College - Following the death of her husband in 2012, Ann moved to Leeds to live near her daughter, Alice and granddaughter, Maisie.

1960

## Emma Buckoke (née Alford)

French with Italian, Bedford College - Emma has retired from teaching special needs children and she now runs a U3A Italian group. She supports Combat Stress, Amnesty and Christian Aid.

1962

## Christine Maton (née Smith)

English, Bedford College – Christine has retired from teaching, but remains actively involved in the ministry as a licensed Lay Minister in Farnborough. She has been married to John for 47 years and they have four children, twelve grandchildren and three great-grandchildren. She would love to hear from any fellow students who remember her.

## Caroline van Tienen (née Maclure)

English and French, Bedford College - Caroline moved many times between the UK and the Netherlands when her Dutch husband worked for Unilever. She is now widowed, lives in Dordrecht and has a partner who is an artist in Amsterdam. Caroline has an unmarried son, who also lives in Holland, and a married son with two teenage children in Loughborough. She keeps busy with three voluntary jobs, including working for her local estate association.

1963

## Gerda Mayer

English & German, Bedford College – A collection of Gerda's poems recently appeared in Norway as *Allé Blad Har Mist Sitt Tre* (All the Leaves have lost their Trees), translated by Odveig Klyve and published by Nordsjoforlaget.

1967

## Caroline McCullagh

Geography, Bedford College - When Caroline joined Bedford College in 1964, she was told that they thought she was the first married undergraduate - and certainly the first with a child!

1968

## Dr Rene Branton (née Saran)

PhD Social Science and Administration, Bedford College - Rene is currently completing her reminiscences, provisionally entitled *Rene's Tree of Life*.

## Alan Ellis

Mathematics, Royal Holloway College – Alan married Professor Brenda Zimmerman in 2013 and they live in Oakville, Ontario. Alan recently co-founded an independent financial consulting company. He remains active and marked his 66th birthday by completing his first marathon at the Niagara International. He is also a member of the Oakville Historical, Oakville Camera and the Oakville Arts Societies.

## Dr Jonathan Fowler

Geology, Bedford College – Jonathan was a member of the team which received the 2012 Hugo Dummett Award for Excellence in Diamond Exploration and Development by the Association for Mineral Exploration British Columbia. This team was acknowledged for its perseverance and technical expertise in exploration that led to the development of the Victor diamond mine in Ontario.

## Ian Mucklejohn

English, Royal Holloway College - Ian's book, *A Dad For All Seasons*, was published in January 2013.





1969

**Elizabeth Gates**

English, Bedford College - Following a career as a freelance journalist, Elizabeth founded Lonely Furrow Company in 2005, a consultancy that helps people write memoirs, fiction and non-fiction. For voluntary sector organisations she runs free taster sessions in journal-writing and she is writing her second novel.

**Baroness Jenny Randerson (née Sinclair)**

History, Bedford College - Jenny became a Liberal Democrat Peer in 2011, having been a Member of the Welsh Assembly for 12 years, representing Cardiff Central. In September 2012 she became a UK Government Minister as Parliamentary Under Secretary of State for Wales and the Government Minister in the Lords for Northern Ireland.

**Dr Rosalind Winter**

English Language & Literature, Bedford College - Rosalind has published two novels, *Ready, Steady, Dig!* and its sequel, *Gnome or Mr Nice Guy*, plus a children's book, *The Mice of St Goran*. She is now working on a second sequel to *Ready, Steady, Dig!* and a novel based on *Beowulf*. She is still in touch with several Bedford contemporaries and would love to hear from others.

1970

**Juliet Entwistle (née Bristow)**

German, Royal Holloway College - Juliet is now retired after a career in education, teaching English, adults with literacy problems and young people with dyslexia and special needs. Contact her at [entprag@talktalk.net](mailto:entprag@talktalk.net) if interested in an informal reunion for German graduates (1969-71).

1971

**Gordon Taylor**

Chemistry, Royal Holloway College – Gordon became a software developer in the 1970s and is now enjoying retirement after 40 years working in computers, electronics and instrumentation. He is still living in New England with his American wife, but comes to the UK once or twice a year to visit old friends and make the most of the splendid hiking in the British Isles.

1972

**David Rigby**

Mathematics, Bedford College - David is Founder Director of Smart Coaching & Training, which he runs alongside his consultancy business, Riggours. He is also a presenter, producer and journalist for Bristol's community radio BCFmradio.com.

**Tim Speechley**

Geography, Bedford College - Tim recently retired after 36 years managing Fiat's vehicle legislation and certification affairs. He is now looking forward to more time pursuing hobbies and voluntary committee work.

1974

**Julia Robertson (née Richards)**

Mathematics, Bedford College - Julia has returned to her West Country roots and now lives in Somerset. Nearly retired, she still teaches Maths for the Open University.

1975

**Dr Majid Moghimi**

PhD Chemistry, Bedford College - Majid's contact address is [M.Moghimi2020@yahoo.com](mailto:M.Moghimi2020@yahoo.com).

**Dr Ann Williams OBE**

Zoology, Royal Holloway College – In August, Ann remarried and also retired as Principal of West Suffolk College.

1976

**Jocelyn Leigh**

Geography, Bedford College - After a career in librarianship, Jocelyn decided to prepare for retirement by taking a BA in Fine Art and has achieved a 2:1. She is still in Orpington, but plans to remarry and spend time in Rochester too.

**Helen Shubrook (née Williams)**

Social Science and Administration, Bedford College - Helen has taken early retirement and achieved a goal by moving to the coast with her husband. She would love to hear from friends from her days at Bedford College.

1977

**Venerable Amaro Bhikkhu**

Physiology and Psychology, Bedford College – Amaro became a Buddhist monk in Thailand in 1978 and was resident at Abhayagiri Monastery in California, where he was co-abbot for 14 years. He moved back to England in 2010, to take up the abbotship of Amaravati Monastery in Hertfordshire, the largest Buddhist monastery in Europe. He has written a dozen books, all of which are free distribution titles. Information about his monasteries and publications can be found at [www.amaravati.org](http://www.amaravati.org) and [www.abhayagiri.org](http://www.abhayagiri.org).

**Dr Heather Ingman**

French, Bedford College - Heather lectures in gender and women's literature and has published *Irish Women's Fiction: From Edgeworth to Enright* (Irish Academic Press, 2013).

**Bill Martin**

Music, Royal Holloway College - After a career spanning education, industry and the music business, Bill launched his strategic consultancy firm in 2012 to utilise the skills and experience picked up in these three sectors. See [www.billcmartin.co.uk](http://www.billcmartin.co.uk).

**Gail McKenzie (née Edwards)**

Botany and Zoology, Royal Holloway College - Gail has just returned to Devon and is working freelance in the area of Natural History, following on from museum work and a position at the BBC.

**Julia Pascal (née Paschale)**

English, Bedford College – Julia's play *Nineveh*, which explored the experience of four former soldiers, played at the Riverside Studios this year. See her website for more information, [www.juliapascal.org](http://www.juliapascal.org).

1979

**Annabel Bowerman (née Shepard)**

Social Science and Administration, Bedford College – Annabel is a Head Teacher in Uganda and says that educating and supporting children from missionary families, along with an international school population

of over 27 nationalities, is fascinating and keeps you "on your toes". Her four children are now building independent lives in the UK. Visitors are welcome if they would like to visit this beautiful country.

**Adrian Brown**

Mathematics, Bedford College – Adrian held planning roles with Transport for London before redundancy led him to explore the property business. He is now moving out of refurbishment and is building a buy-to-let property portfolio. He is also back with London Underground as a Train Service Planner. Adrian is married to Ruth and they have a son, Alexius, and live in Leigh-on-Sea. His travels have taken him to 60 countries, which may be revisited once Alexius is older.

**Andrew Saunders**

Mathematics, Royal Holloway College – Andrew works with his wife Jenny at BMS World Mission in Nepal.

1980

**Julia Cripps (née Hide)**

English Literature, Royal Holloway College – Julia is married to Simon and they one son, Liam, aged 12, and a dog called Rosie.

1981

**Liz Wilson**

MMus Historical Musicology, Royal Holloway College - Liz had an article about composer Herbert Howells published in *British Music Society News* and reprinted in *American Organist*.

1982

**Gonzalo Pinas**

General Biology, Royal Holloway College – Gonzalo would like to get in touch with anyone who remembers him.

1983

**Richard Leishman**

Biology & Zoology, Royal Holloway College - Richard is married with three children, the eldest of whom is at UEA and the youngest is in the first year of high school. He has worked in nature conservation in many parts of the UK, including Devon, north and south Wales, Norfolk, Lancashire, Arran, Argyll, Perthshire and Forfarshire. His interests include walking, photography and folk music.

**Jenny Ramsden MBE**

Mathematics, Bedford College - Jenny was awarded the MBE in the 2013 New Year's Honours List, for services to Further Education and to Mathematics education through the UK Mathematics Trust.

1984

**Professor Paul Lawson**

Biochemistry, Royal Holloway College - Paul is Professor of Microbiology at the University of Oklahoma. Prior to moving to the USA in 2005, he married his long time partner Jane, an artist and educator. In 2009 he was inducted as a Fellow of the Australasian College of Biomedical Scientists. Paul regularly returns to the UK and is in touch with John Beech, Barry Townsend, Bron Zolyniak, Mike Sales and Neil McIntosh.



## Bridget Sullivan

Zoology, Royal Holloway College - Bridget achieved a life milestone when she cycled 70 miles from London to Brighton to raise money for Norwood and the Down's Syndrome Association. Bridget was diagnosed with ME in 1995 and describes this achievement as "like winning the lottery". To visit Bridget's sponsorship link, please visit [uk.virginmoneygiving.com/nevergiveup](http://uk.virginmoneygiving.com/nevergiveup).

1985

## Alison Bates (née Faughey)

Modern History, Economic History and Politics, Royal Holloway College – See Christopher Bates, 1985

## Christopher Bates

Modern History, Economic History and Politics, Royal Holloway College – Christopher worked in the Sudan for a short spell and then became a teacher at St Edmund's School, Canterbury. He left to become Head of Politics at Kimbolton School and is now Deputy Head (Academic). He married alumna Alison Faughey in the College Chapel and their daughter is now at Royal Holloway, so they are well and truly a College family.

## Dr Geoffrey Quelch

Chemistry, Royal Holloway College - Geoffrey is now studying for a Law degree (JD) at the University of Denver, Colorado.

1986

## Veronica Brown

Sociology and Social Policy, RHBNC – Veronica is still teaching in primary education, still playing badminton, walking and generally keeping fit and loving life in the North.

1987

## Janet Frank (née Thatcher)

Chemistry and Physics, RHBNC - Janet moved to the Isles of Scilly with her husband, daughter and twin boys. She has become a postmistress and a B&B, shop and gallery owner; which is a change from teaching Physics.

## Dr Janet Frost

Physics, RHBNC - Janet was listed by the *Health Service Journal* as one of its inspirational women in healthcare. She has been Chief Executive of the NHS Health Research Authority since 2012 and was previously Director of the National Research Ethics Service.

## Clive Hayward

Drama & Theatre Studies, RHBNC - Clive has been a professional actor for the last 24 years. Throughout 2012, he played Bernard in *Yes, Prime Minister*, both on tour and in the West End. He is currently playing Horace Hardwick in the West End production of *Top Hat*. He has written and directed five professional pantomimes, and recently reworked his adaptation of *Billy Budd* for the stage.

## Roderic Morgan

MA Later Medieval Studies, RHBNC - Roderic has been attending a variety of courses, as well as continuing with voluntary work at a day centre, in an Oxfam bookshop and in the archives of M&S.

1988

## Maurice Baker

Computer Science, RHBNC - Maurice is now divorced after 22 years of marriage.

1990

## Karen Reitenbach (née Clark)

French, RHBNC – Karen was married in 2007 and had a daughter in 2009. She is happy working as a translator in a law firm in Paris.

1991

## Dr Lee Rotherham

French and Latin, RHBNC - Lee has been involved in a mad splurge of writing of late. Recent titles include *The EU in a Nutshell* (foreword by Dr David Starkey); *A Fate Worse Than Debt* (foreword by Pitt the Younger); *The Discerning Barbarian's Guidebook to Roman Britain - People to Visit and Places to Plunder*; and a pending survival guide to the Hundred Years' War. Available at all good booksellers, they make perfect props for wonky tables.

1992

## Keith Farnish

Geography and Mathematics, RHBNC - Keith is a radical environmental campaigner and writer, who is now firmly ensconced in the Scottish Borders with his family. His first book, *Time's Up!*, was published in 2009 by Green Books, and his new title, *Underminers: A Guide to Subverting The Machine*, was released by New Society Publishers in September 2013.

## Dr Robert MacGregor

Geochemistry, RHBNC - For the last six years Robert has worked for the Environment Agency as a nuclear regulator.

## Dr Russell Seymour

Ecology, RHBNC - Russell is Sustainability Manager at Lord's Cricket Ground. He worked with the London 2012 sustainability team when they hosted the Olympic archery last year and was there for England's Ashes win this year. He still lives in Reading with his partner Diana and is very keen to hear from anyone who remembers him.

1993

## Emma Land (née Knight)

English, RHBNC - Emma is working as a literacy teacher and a freelance copy-editor.

## Jacqueline Martinez (née Thornton)

Music, RHBNC – Jacqueline's daughter Helena was born in May 2012 and she joins siblings Lucy, Isabel, Teresa, Thomas and Nicholas. They all attend the College Garden Party each year as they enjoy it so much.

1994

## Carolyn Crowley (née Farrant)

French and German, RHBNC – Carolyn married Richard Crowley in 2004 and their daughter, Beth, was born in July 2011.

## Jarmila Halovsky-Yu (née Halovsky)

French and Italian, RHBNC - Jarmila is as busy as ever juggling a family, a new job and collaborating with Royal Holloway to help build its alumni mentoring scheme. To network or get back in touch, contact her at [jarmilahyu@gmail.com](mailto:jarmilahyu@gmail.com).

## Kathryn Kieschnick (née Elliott)

German, RHBNC - Kathryn recently moved to a town near Krefeld and is teaching again. Her children are both in their teens and are doing well.

## Dr Julie Peakman

MA Women's History: Gender & Society in UK and Europe, RHBNC – Julie has just published *The Pleasure's All Mine: A History of Perverse Sex*, which she describes as the first comprehensive history of sexual difference. Her sources are wide-ranging and include letters, diaries, memoirs, court records, erotic books, medical texts and advice manuals.

## Sean Scaplehorn

Computer Science, RHBNC - Sean has published *Marmalade SDK Mobile Game Development Essentials*, a book about video game programming.

1995

## Beth Menzies

Drama & Theatre Studies, RHBNC - Beth is currently on maternity leave with her five month-old daughter, Rowan, who is a sister for Angus, two. She lives in Crouch End, London and runs a photography business with her husband.

## Julie Renahan (née Mead)

French, RHBNC – Julie is living in Slovenia on a three year placement with her husband's company. She is improving her photography skills whilst working for a Slovene photographer, who she assists with marketing and PR. Her two children are Jack and Sophia, aged six and four.

## Andrea Rice (née Greenwood)

European Studies, RHBNC – Andrea has moved to Geneva with her children, Stefan Lucas and Leo, and is enjoying being an expat mum for now.

1996

## Diego Burton

Economics and Management Studies, RHBNC – Diego has been a Canadian Legal Resident since 2011 and Store Manager for Cool as a Moose, Coastal Culture Inc since 2012.

## Camilla Cohn (née Allen)

Italian, RHBNC - Camilla is having fun raising three children in the USA and is still active with running, tennis and teaching Spanish part-time.

## Isabel Ellis

Geography, RHBNC – Isabel is very involved with Surrey Archaeological Society; she runs the Artefact and Archive Recording Group (AARG) and heads on-site artefact processing teams at excavations.





## Linda Taylor

Drama and Theatre Studies, RHBNC - Linda is on a six-month sabbatical from the BBC and is working for Childline as a Schools Presentation Volunteer.

## 1997

### Jude Glazier (née Shaw)

Environmental Geology, RHBNC - Jude returned to the UK in December 2011 with her three year-old son, Ross, after ten wonderful years living in Canada. She is now back in Altrincham and enjoying reconnecting with everyone at weddings and christenings.

### Gordon Glover

Computer Science, RHBNC - Gordon has been at the Palo Alto startup Bill.com for two and a half years and is loving it. He was recently promoted to QA Manager.

### Christopher Johnson

Psychology, RHBNC - Chris obtained a Masters in Occupational and Organisational Psychology from Surrey University. Further studies in Energy Psychology and Past Life Regression Therapy, along with his passion for metaphysical literature, has resulted in his first book, *It's About You! Know Your Self*, published by O-Books.

## 1998

### Simon Richard Johnson

French and Management Studies, RHBNC - Richard is married with three children.

### Lucy Mayle

German, RHBNC - Lucy is living in West Sussex with her partner Stewart and is working at a primary school as the teacher in charge of a special support centre for children with autism.

### Rebecca Mosby (née Shephard)

German, RHBNC - She finished working for a German machinery import company last year and is currently being kept busy looking after two sons, Daniel and Luke, four and one.. She has been married to Andrew for seven years and lives in Hersham in Surrey. Rebecca is still in touch with her friends from Royal Holloway and they meet up several times a year.

## 1999

### Jane Forrest

English Literature, RHBNC - Jane's debut novel, *Orders from Above*, has just been published by Cosmic Egg Books. Set in a timeless Wiltshire village, it is the story of a private detective and a cosmic universal struggle between good and evil.

### Yong Fatt (Yangfa) Leow

Social Policy, RHBNC - Yangfa has published *I Will Survive: Personal gay, lesbian, bisexual & transgender stories in Singapore*, which brings together the experiences of 21 people who have survived extraordinary circumstances. Find out more at: <http://iwillsurvivesg.wordpress.com/>.

## 2000

### Christopher Gomez

Social Policy and Political Studies, RHBNC - Christopher has two children, Jessica and Casper, and has recently completed buying and converting his third property in Dulwich. He is part of a small company which is creating waves in the media world. Christopher has also created the Ruggerbeez network, a rugby club for children aged 2-7 based in parks across London. Find out more at [www.ruggerbeez.com](http://www.ruggerbeez.com).

### Corrina Gordon-Barnes (née Gordon)

English, RHBNC - Corrina runs her own business, YouInspireMe.co.uk, teaching marketing to solopreneurs, with a specialism in blogging. She is the author of *Turn Your Passion To Profit: a step-by-step guide to getting your business off the ground* and lives in Cambridge with her partner Sam.

### Yvonne Mason

MA Medieval Studies, RHBNC - Yvonne moved to mid-Wales with her husband and they have a daughter, whom they are home educating. Yvonne has set up her own business as a private teacher and tutor in History and English.

## 2001

### Sqn Ldr Graham Crow

Geology, RHBNC - Graham is living in Buckinghamshire this year, although he has spent most of his time since his promotion to Squadron Leader in various parts of the world on short notice. He is engaged to be married to Helen Blenkharn in June.

### Emma Loyns (née Crawford)

Music, RHBNC - Emma runs her own franchise, Monkey Music, and enjoys spending time with her two young daughters. She is keen for a 2001 reunion.

### Kathryn Moulds

Mathematics, RHBNC - Kate and Nick tied the knot after six years together. They were married in their favourite city, New York, on 30 May 2013.

### Ruth Simmons (née Taylor)

Drama and Music, RHBNC - Ruth married Nick Simmons in October 2013. She is currently working as a freelance stage manager.

## 2002

### Dr Fuensanta Monroy Hernandez

German and Management Studies, RHBNC - Fuensanta worked in various companies before reading for her PhD in Education. She's now teaching English as a foreign language and researching on teacher education at the Universidad Catolica San Antonio in Murcia, Spain.

### Dr Niamh O'Dwyer

Psychology, RHBNC - Niamh is working as a Clinical Psychologist at West London Mental Health NHS Trust.

## 2003

### Sarah Brygan (née Dickinson)

Geography, RHBNC - Sarah has two children, Emma born in October 2011 and Charlie in April 2013, and is still living in Swindon with her husband Steve. She is still working for ESRC as a Digital Communications Officer.

### Ria Parry

Drama and Theatre Studies, RHBNC - Ria is Joint Artistic Director of Iron Shoes, an Associate Company at the Bush Theatre.

### Dr Emma Robinson

MA Women, Gender, Culture: Histories 1500-Present, RHBNC (PhD 2008) - Emma's book, *Women, Travel and Identity: Journeys by Rail and Sea*, is published by Manchester University Press and is the end of a project that she began in the History Department in 2004.

## 2004

### Jo Hughes

Media Arts, RHBNC - Jo jointly won the Canadian Screen Award for Achievement in Visual Effects from the Academy of Canadian Film & Television for her work on *Resident Evil: Retribution*.

### Dr Miranda Leontowitsch

PhD Sociology, RHBNC - Miranda is Honorary Lecturer in Qualitative Research Methods at St George's, University of London. She has published *Researching Later Life and Ageing - Expanding Qualitative Research Horizons* (Palgrave Macmillan, 2012).

### Pamela Ramtohl

Psychology, RHBNC - Pamela did the PGCE Primary at Brunel University to qualify as a teacher, after which she completed her NQT year. She then worked for two years as a Security Officer for BAA at London Heathrow Airport. She gained an MA in Sociology and then worked for Groundwork Thames Valley, a non-governmental charity organisation for a one-year contract. Since then, Pamela has been a supply Primary School Teacher working in many different Primary schools across London and she currently lives in North London.

### Samantha Taylor

Geography, RHBNC - Samantha and her fiance Matthew Cloud welcomed the birth of their baby, Jack Taylor-Cloud, on 14 July 2013.

## 2005

### Laura Berry

History with Spanish, RHBNC - Laura is Editor of Your Family History magazine and works part-time as a historian and heritage specialist, managing two businesses: The House Detective and Vivat Heritage.

### Francis Dumbuya

MSc Social Work, RHBNC - Francis would love to know how fellow alumni are doing.

### Amy Hope

Psychology, RHBNC - Amy is a fundraiser for the charity Childhood First. She was previously at Barnardo's and has been working in the charity sector for five years. She writes proposals to trusts and foundations, and meets with prospective donors.

### Ruth Hopkins

MMus Music, RHBNC – The debut CD of Ruth's K'antu Ensemble has just been released and is available to purchase at [www.kantu-ensemble.co.uk/cd.html](http://www.kantu-ensemble.co.uk/cd.html).

### Luke Houghton

History, RHBNC - Luke taught English in Japan for three years.

### Natalie Remington (née Ball)

English and Drama and Theatre Studies, RHBNC - Natalie married Geoffrey Remington in September 2012 and they live in Wiltshire.

## 2006

### Dr Kieran Alden

Computer Science, RHBNC - Kieran completed his PhD in Computational Immunology at the University of York in 2012 and is now Research Fellow at the University of Birmingham, examining the effect of the gut microbiota on human health.

### Jon Mason

English and Drama and Theatre Studies, RHBNC - Jon trained as a social worker and psychotherapist. He is now Clinical Director of a third sector organisation in Birmingham that specialises in mental health interventions. He married in 2008 and his son, Benjamin, was born in 2009.

### Dr Danielle Park

History, RHBNC (MA 2008, PhD 2012) – Danielle's PhD thesis is entitled, *Under Our Protection, That of the Church and their Own'- Papal and Secular Protection of the Families and Properties the Crusaders Left Behind, c. 1095-1226*, and was supervised by Professor Jonathan Phillips.

## 2007

### Sunny Bali

MBA International Management, RHBNC - Sunny is engaged to Kayla Gill, having popped the question before a majestic sunset at the Cape of Good Hope, South Africa. They are holding their their Christian and Hindu wedding ceremonies in Florida.

### Richard Welch

MA Documentary by Practice, RHBNC – Rich is Program Manager and Festival Co-Director of the Antenna Documentary Festival in Sydney, Australia, see [www.antennafestival.org](http://www.antennafestival.org) for more information.

## 2008

### Christopher Foster

Politics and International Relations, RHBNC - Chris undertook internships with Honda Racing F1 Team and Ferrari, before setting up his own consultancy business with clients including Zytec Motorsport and Ginetta Cars. He joined marketing agency Market Engineering in 2011 and is an Account Director working on a number of interesting automotive and motorsport accounts. Chris also acts as an advisor to the motorsport and classic car industries through Christopher Foster Consulting, where his portfolio covers sponsorship acquisition, classic car brokerage and driver management.

### Rebecca Sherlock

European Studies (French) (MSc International Relations), RHBNC - Rebecca gained a Masters in International Public Management from Sciences Po Paris in 2011 and moved straight into a job at Interpol, where she had previously been an Intern Policy Analyst.

### Elaine Whiddon (née Sumption)

Physical Geography, RHBNC - Elaine married Gareth Whiddon (Geology, 2008) on 6 July 2013.

### Gareth Whiddon

Geology, RHBNC - See Elaine Whiddon, 2008.

## 2009

### Kate Cheesman (née Cooke)

Media Arts, RHBNC - See Michael Cheesman, 2010.

### Dr Michael Laing

Biomedical Sciences, RHBNC - Michael has finished his PhD in Neuroscience at the University of Bristol, where he studied how emotions can enhance the formation of long-lasting memories. He is now at the University of Pittsburgh studying the mechanisms of drug addiction, withdrawal and relapse.

### Carl Woodward

Postgraduate research in Theatre (Physical Theatre and Performance), RHBNC - Carl has been appointed as Youth Theatre Director at The Pound Arts Trust in Corsham. He has been working freelance at Salisbury Playhouse, Theatre Royal Winchester and Dorset School of Acting. His website is [www.carlwoodward.co.uk](http://www.carlwoodward.co.uk).

## 2010

### Michael Cheesman

MSci Physics, RHBNC - Michael and Kate Cheesman (née Cooke, Media Arts 2009) were married in June 2012 in Dorset with many alumni friends present. Kate works in PR and Michael has taken up a new position within his company, QinetiQ. The couple are moving to Edinburgh.

### Victoria Davis

MA History, RHBNC – Victoria is in her second year of an AHRC Collaborative Doctoral Award at the Institute of Historical Research, University of London and is working with the British Postal Museum and Archive. She also volunteers for both the Riding for the Disabled Association and the Royal British Legion.

### Robert Taylor

MA Ancient History, RHBNC – Robert is in his second year of a PhD at Birkbeck, University of London. His thesis is entitled *Tensions in Knowledge-construction in Pliny's Natural History*.

### Yong Zhang

International Bridging Diploma for Graduate Studies, RHBNC - Yong is studying English and Accountancy.

## 2011

### Rachel Barnes

Psychology, RHBNC - Rachel has started an MSc in War and Psychiatry at King's College, London.

### Dr Nikolaos Sideris

PhD Music, RHBNC - Nikolas won first prize at the Artistes en Herbe International Composition Competition in Luxembourg for his work *Piano Stories* for piano four hands. He is the owner of the newly launched music publishing house Editions Musica Ferrum, which features more than 50 works from 15 composers.

## 2012

### Miku Hirata

MA History, RHBNC - Miku returned to Japan to complete her PhD, but unfortunately the supervisor in Tokyo would not permit her thesis. She was very excited to read the articles in *Higher* on the suffragettes and 'A Room of One's Own', because her research is in women's history. She hopes to finish her studies this year.

### Gabriel Jabbour

MSc International Management, RHBNC - Gabriel is excited about his new position as a Trade Commissioner for the Embassy of Canada in Saudi Arabia. He says he couldn't have got to where he is today without Royal Holloway.

### Jonathan Scott

Music, RHBNC - Jonathan is working in Vietnam at the British International School in Ho Chi Minh City. He is also a busy freelance musician and finds life in Vietnam to be very different.

### Clare Summerskill

MA Theatre (Applied Drama), RHBNC - Clare's book, *Gateway to Heaven - Fifty Years of Lesbian and Gay Oral History*, was published by Tollington Press in 2012.

### Elizabeth Townsend

Music, RHBNC - Elizabeth was awarded the Cleveland Medal at the Manx Music Festival on the Isle of Man. The medal is given by the Cleveland USA Manx Society for the most outstanding singer in all classes and qualifies her as soloist for the Manx National Day Celebrations.

### Kimberley Wadden

French with International Relations, RHBNC - Kimberley did a three month unpaid internship at an events staffing company through Inspiring Interns, who then placed her as Communications Manager at A Mumford. She now plans big corporate events such as the BNC Events shows, the trade shows for the events industry. She loves the job and gets to meet lots of people involved in the UK and international event world.

### Natalie Wild

Music, RHBNC - Natalie is doing a secondary level Music PGCE. She often comes back to College, as her boyfriend conducts one of the orchestras.

### Shengxian Zhao

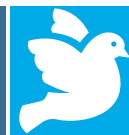
MSc Entrepreneurship, RHBNC - Shengxian is starting his own café-store business.





# In memoriam

The month and/or year of death  
are given where known



## Graduates of Bedford College

**Olga Whitlow** - Geography (1929-32). February 2013  
**Lillian Kay** - Mathematics (1932-35). June 2013  
**Mary Brain (née Ottley)** - Sociology (1938-40). June 2013  
**Lady Maud Alexander (née Collard)** - Mathematics (1938-41). September 2013  
**Clare Stephens (née Dawson)** - Mathematics (1939-42). May 2013  
**Eileen Shirley (née Greaves)** - Sociology (1942-44). March 2013  
**Dr Margaret Jackson** - Mathematics (1942-47). October 2012  
**Pamela Johns (née Thurgood)** - Geography (1946-49). August 2013  
**Mary Thomas** - Geography (1946-49). May 2013  
**Brigitte Hay (née Schatzky)** - German (1944-50). July 2013  
**Jasmine Miller (née Sidney)** - Zoology (1947-50). July 2013  
**Evelyn Farrell (née Kinsford)** - Classical Studies (1948-51). March 2013  
**Pamela Hayworth** - Geography (1948-51). April 2013  
**Dr Sheila Chown (née Sawyer)** - Psychology (1950-53). February 2013  
**Jennifer Strick (née Hathway)** - History (1955-58). April 2013  
**Dorothy Griffiths (née Todd)** - French (1957-60). 2013  
**Dr Janette Viggers (née Lacey)** - English (1959-62). May 2013  
**William Blacklock** - English (1975). April 2013

## Graduates of Royal Holloway College

**Elizabeth Seabrook (née Seabrook)** - Mathematics & Physics (1939-42).  
June 2013  
**Margaret Garland (née Arrall)** - Classics (1948-51). August 2013  
**Dr Juliet Frankland (née Brown)** - Botany (1949-52). June 2013  
**Margaret Cullinan** - General Arts (1953-56). April 2013  
**Jean Potter** - History (1956-59). June 2013  
**Vicky Mayes** - English (1957-60). October 2012

**Verena Russell (née France)** - Chemistry (1959-62). February 2013  
**Pamela Fletcher (née Taylor)** - Mathematics (1961-64). June 2013  
**Adeyemi Ajibade** - MA Drama & Theatre Studies (1984-85). January 2013  
**Mark Pusey** - Modern History Economic History and Politics (1982-85). August 2013

## Graduates of RHBNC

**Colin Archer** - English (1986-89). October 2013  
**Lynne Ellison** - MA History: Ancient & Medieval (1990-93). August 2012  
**Michael Macsweeney** - Modern History Economic History and Politics (1994-97). July 2013  
**Group Captain Ian Madelin** - MA Classical Studies (2001-02). October 2013  
**Sebastien Manterfield** - Management Studies (2001-03). January 2010  
**David Leiser** - Management Studies with Spanish (2004-07). January 2013  
**Christopher Mayled** - MMus Advanced Musical Studies (Historical Musicology) (2004-08). March 2013  
**Dr Anton Poot** - PhD History (2005-13). August 2013  
**Julie Gaunt** - CCERT Practice Teaching (Social Work) (2006-07). June 2013  
**Genevieve Gregory-Cullen** - Italian (2007-10). December 2012  
**Michael Gorman** - MA Literatures Of Modernity: Modernism, Postmodernism, Postcolo (2009-12). May 2013

## Staff

**Jesse Funnell** - Botany Department (1948-85). March 2012  
**Catherine Baulk** - English (1996-2002). September 2012  
**Dr David Bennett** - PhD History (1996-2003). October 2012  
**Justin McPhee** - MA Medical Sociology (2000-02). March 2011

## Obituaries of Staff

### Clive Allen (1938-2013) Bursar (1987-2000), RHBNC; Honorary Fellow (2003)



Clive Allen, who died on 9 October 2013, was Bursar of the College from 1987-2000, during which he led a £40 million programme of development. The Bedford Library, the award-winning International Building and the first two phases of the Sports Centre redevelopment enhanced

College facilities, while Runnymede I, Runnymede II and Highfield Court provided additional student accommodation. The modernisation and restoration programme for Founder's included the installation of fire detection and central heating, culminating in the restoration of the Chapel.

Clive trained as a mechanical engineer at Teeside University from 1954-59, and then at the University of Durham, where he was awarded First Class Honours in Civil Engineering in 1962. His first graduate job was in private practice as a consulting engineer. In 1972 he

moved to Edinburgh to become an Assistant Buildings Officer at the University and, subsequently, Deputy to the Buildings Officer.

Clive became an Honorary Fellow of Royal Holloway in 2003 and retained a keen interest in College affairs. His children Paula, Linda and Michael were all married in the College Chapel, thus cementing the close links of the whole family with the College. Clive will be remembered by his colleagues and friends as a man of kindness, wit and intelligence, but above all as a man of integrity.

### Dr Geoffrey Britton (1924-2013) English Department (1950-83), Bedford College



Dr Geoff Britton, who died on 19 July 2013, was a much loved teacher of generations of English students at Bedford College. He was also a well-known figure in the University of London as several times Chair of the Board of Studies in English.

Geoff must have been one of the youngest students at Birmingham University when he completed his first year in the English Department at seventeen, before being called up for military service. This took him to Australia as a radio mechanic, but the war

ended before he saw action and he returned to Birmingham to complete his degree and then move on to postgraduate work. His main interests were in medieval English language and literature and his PhD dissertation was an edition of *The Lindisfarne Gospels*. His first teaching appointment, in 1950, was to Bedford College, where he remained for the rest of his full-time academic career until taking retirement in 1983 when the English Department moved to Egham. From then until 1989 he taught part-time, mainly at Queen Mary and Westfield College in London but also sometimes at Egham.

Geoff taught mainly his beloved Chaucer and in this he had great success, inspiring active engagement with these major works from students less and less well-prepared in advance to cope with linguistic difficulties. They were

fortunate to have in him someone who combined both such an authoritative understanding of the language that he could make it seem completely accessible and a literary sensibility that brought the texts alive and revealed their infinite variety and skill and their moral profundities.

As a colleague, Geoff was generous thoughtful and supportive of others and particularly kind and considerate to junior staff, who remember him with gratitude. In retirement, Geoff continued to have a teaching role in many ways, as a Church of England lay reader at St Jude on the Hill near his home in Hampstead Garden Suburb. His family was always at the centre of his life and was a great source of strength to him. He is survived by his widow, Barbara, and their four children and seven grandchildren.

### Dr Sheila M. Chown (1931–2013) Psychology Department (1961-87), Bedford College & RHBNC



Dr Sheila Chown, who died in February, was educated at Bedford College, graduating with a first class degree in Psychology in 1953. Her PhD was on the formation of occupational choice in grammar school pupils, awarded by the University of Liverpool in 1959. She worked as a scientific officer at the newly set up Medical

Research Council Unit on Occupational Aspects of Aging in Liverpool for four years. In 1961 she joined the staff of the Psychology Department at Bedford

College, remaining there for the rest of her career; she was appointed Reader in Psychology in 1973.

Sheila's particular research interest was adaptation to change in relation to ageing. Highly cited articles in prestigious journals quickly established her reputation as an international expert on gerontology. This led to innumerable invitations to serve in an advisory capacity. In 1971 she was invited to the White House Conference on Ageing as a foreign observer, and hosted a meeting at Bedford College at which the British Society of Gerontology was founded.

Sheila was the bulwark of the Department, carrying a heavy administrative load with efficiency and good will. She particularly enjoyed postgraduate supervision, at which she excelled. Her students – many of them

now established in senior positions across the globe – appreciated her support and guidance.

Outside the Department, Sheila made a substantial contribution to the British Psychological Society, serving on many committees and holding the offices of Treasurer, Honorary General Secretary and Deputy President. She also served as a psychologist on Selection Boards for the Civil Service Commission for many years. She combined professionalism and efficiency with courtesy and kindness. Her efforts were not confined to the ivory tower, but contributed to the wider world in a number of different spheres. Many people have cause to be grateful to her.

### Alan Davies (1933-2013) Computer Science Department (1967-2006) Royal Holloway College & RHBNC



Alan Davies, who died on 7 September 2013, was one of the founders of our Computer Science Department. He served as Head of Department and played a crucial role in its development, continuing to be involved in departmental activities right up until this summer. His research interests lay in computer

modelling of large scale scientific problems, especially in the field of laser optics and wave guides. His collaborative

research work in the field of optical waveguides was important in leading to advances in the understanding of propagation phenomena in multimode waveguides. This work, and its practical application to new generations of waveguide devices and systems, led to many publications and conference presentations.

Alan initially worked at AWRE Aldermaston after postgraduate work in Theoretical Physics at UCL. He was subsequently appointed Lecturer in the Mathematics Department at Royal Holloway in 1967 and Senior Lecturer in the Computer Science Department in 1971. From 1969-71 he was additionally an Associate Professor in Computer Science at the University of Nebraska and from 1975-76 he was a Research Associate at the

University of Berkeley. He was also an Adjunct Professor at RIES, Wayne State University in Detroit from 1976-81.

Alan's boundless optimism was characterised by a wonderful sense of humour and a joy for life. Amongst his greatest strengths were his organisational abilities and his insistence on fairness. He was always considerate and ready to talk to anyone, no matter who they were. He particularly liked working with young people and several generations of his students have gone on to senior positions in universities and industry.

### Professor David Roberts (1943-2013) Visiting Professor, Department of Earth Sciences (1995-2013), RHBNC; Honorary Fellow (2001)



Professor David Roberts, who died on 6 July 2013, was one of the leading petroleum geologists of his age and was BP's authority on basin systems worldwide. He was also a very active Visiting Professor in our Department of Earth Sciences, teaching his Petroleum Systems course

both at Royal Holloway and for our MSc programme in Tyumen, Russia. He always provided great inspiration for the students taking his course, but he equally enjoyed spending time talking with staff, encouraging their research, and offering invaluable advice on all aspects of departmental life, something that was appreciated by a number of Heads of Department.

At the time of David's election as an Honorary Fellow of the College he was Global Exploration Advisor for BP. He was a very prominent member of the Petroleum Geoscience community and received

numerous awards from professional societies in the UK and the USA, reflecting his wider contribution to the discipline that went well beyond the limits of his company responsibilities. He published widely and was Editor-in-Chief of one of the main journals in the field. A recently published book on Regional Geology and Tectonics, to which many members of the Royal Holloway department contributed, is a fitting tribute to his work.



# New books by alumni

We review a selection of recently published books by alumni.  
Please send details of your books to [s.pickles@rhul.ac.uk](mailto:s.pickles@rhul.ac.uk).



James Dixon

(MA Modern History: Power, Culture & Society, 2005)

## ***Out of Birmingham, George Dixon (1820-1898), 'Father of free education'***

James Dixon sheds light on the life of George Dixon, a successful entrepreneur and Mayor of Birmingham who devoted much of his life to educational reform. The late Dixon's achievements have been heretofore lost in the shadow of his better known colleague Joseph Chamberlain. However, Dixon's leadership, as head of the Birmingham-based National Education League, helped to convince the new Liberal government of the need for change, which led to the introduction of Forster's Elementary Education Act of 1870. This piece of social legislation became the cornerstone for compulsory and free education in England and Wales. Whilst James Dixon happens to be the great-great-grandson of his subject, his writing remains free from sentiment and offers an informative account of educational reform in the nineteenth century.

Brewin Books, August 2013  
(paperback)

ISBN: 978-1858585048



Dr Bradley L. Garrett

(PhD Geography, 2012)

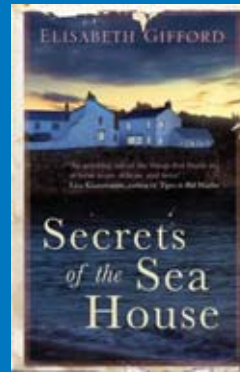
## ***Explore Everything: Place-Hacking the City***

Dr Bradley L. Garret defies those who think that the world leaves little left to explore. Instead he looks for adventure in the very cities where we live and work day in and day out. Through Garret's eyes, familiar urban landscapes offer countless opportunities for exploration. His curiosity drives him to evade security to explore each city's out of the way places, from forgotten tunnels to seedy outskirts. He also scales unfinished skyscrapers to gaze out over cities and ponder how to understand the twenty-first century metropolis. In his book, Garret shares these thoughts and challenges our right to access restricted urban spaces and considers how we might reclaim urban spaces. He also recounts some of his expeditions with the London Consolidation Crew, an urban exploration collective.

Verso Books, October 2013

(hardback)

ISBN: 978-1781681299



Liz Gifford

(MA Creative Writing, 2010)

## ***Secrets of the Sea House***

Liz Gifford's debut novel transports readers to the Hebridean island of Harris and a manor house shrouded in secret. In 1860, newly ordained Reverend Alexander Ferguson arrived on the island, oblivious to the fact that his time on Harris would entirely alter the course of his life. Years later, Ruth and Michael purchase Sea House with dreams of transforming it into a home bursting with family. As the couple begin to renovate their house, they make a disturbing discovery. A baby's skeleton, with its tiny legs fused together like a mermaid, lies buried beneath the house. Ruth can't stop wondering who buried the bones and why. She determines to solve the mystery, and, in doing so, finds that the answers may be linked to her own past.

Corvus, August 2013

(paperback)

ISBN: 978-1782391111

Also available as an e-book



Dr Adrian Jobson

(BA History 1994)

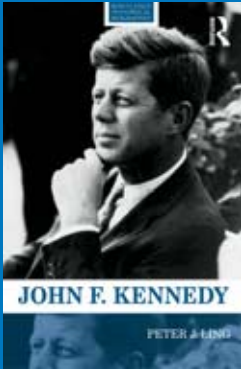
## ***The First English Revolution: Simon de Montfort, Henry III and the Barons' War***

Adrian Jobson chronicles the rise and fall of Simon de Montfort, the first leader of a political movement to seize power from a reigning monarch. By 1263, he and his band of English barons took most of south-eastern England and defeated King Henry III at the battle of Lewes in 1264. Following these victories, De Montfort took the helm as the de facto ruler of England, and the monarchy was close to complete abolition. De Montfort's triumph did not last long. Prince Edward escaped captivity and sought retribution successfully at the Battle of Evesham, where De Montfort met his end. Shortly thereafter, the monarchy was fully restored to Henry III. The intensity of the time pervades Jobson's thrilling narrative of this revolutionary period in English history.

Bloomsbury Continuum, August 2012 (hardback)

ISBN: 1847252265

Also available as an e-book



## Professor Peter Ling

(BA History, 1977  
Royal Holloway College)

### **John F. Kennedy**

Celebrated biographer Peter J Ling, Professor of American Studies at the University of Nottingham, delves into important questions surrounding John F Kennedy, the most idolized US president of the post-Second World War era. Wading through the immense body of Kennedy scholarship, Ling ponders the man and his presidency—from his policy goals and contribution to the political scene of the time, to the mystery of his death and the outpouring of grief that it elicited. He also explores the evolution of Kennedy's memory. Through his concise biography, Ling offers readers a new view of Kennedy. In doing so, Ling helps span the gap between the general public's overwhelmingly positive regard for the late president and historians' mixed reviews of Kennedy's term in office.

Routledge, October 2013  
(paperback)  
ISBN: 978-0415528863



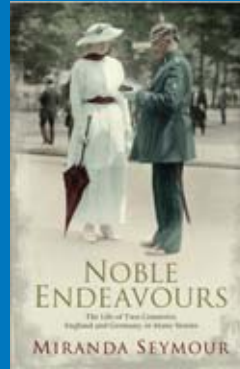
## Lore Segal

(BA English Literature, 1949  
Bedford College)

### **Half the Kingdom**

Within the corridors of Manhattan's Cedars of Lebanon Hospital, doctors have noticed an increase in patients with Alzheimer's. This is the backdrop of award-winning author Lore Segal's latest novel, *Half the Kingdom*. Characters from Segal's earlier novels return, and their lives intertwine in a dark comedy about life, death and aging in post-9/11 America. Beneath characters' paranoia and hysteria lie deeper fears about mortality and a failed healthcare system. In this tale of the absurd, people who are mentally sound one day wake up the next with symptoms of advanced dementia. Ailing parents and their grown children wrestle with feelings of devotion and frustration, upon finding that caregiver roles have been so suddenly reversed. Some believe that it is an epidemic, while others fear a secret terrorist plot.

Melville House, October 2013  
(hardback)  
ISBN: 978-1612193021  
Also available as an e-book



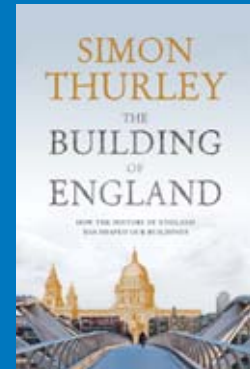
## Miranda Seymour

(BA English, 1981  
Bedford College)

### **Noble Endeavours: The Life of Two Countries, England and Germany, in Many Stories**

According to Miranda Seymour, "No two countries in Europe possess a stronger history of cultural and familial sympathy, trust and mutual respect than Britain and Germany." Seymour supports her claim in her new book about the history of England and Germany, and their relationship with one another, as told by those from all walks of life. Based on her five years of research, Seymour highlights the two countries' shared sympathies and aspirations from the 17th century onward. She points out that "Britain's close-knit relationship with Germany predates the Third Reich by over 200 years." Seymour scolds those who continue to insult and stereotype Germans in ways that would not be tolerated in relation to others, and she derides columnists' attempts to dredge up the past and reopen old wounds.

Simon & Schuster, August 2013  
(hardback)  
ISBN: 978-1847378255



## Dr Simon Thurley CBE

(BA History, 1985  
Bedford College & Honorary Fellow)

### **The Building of England: How the History of England Has Shaped Our Buildings**

England's buildings—from imposing Norman castles to modern homes—tell a story about the country's past, and their influence can be seen in architecture around the world. Dr Simon Thurley, Chief Executive of English Heritage, explores these ideas in his, beautifully illustrated book *The Building of England*. The book features over 500 drawings, photographs and maps that enrich Thurley's explanation of the significance of England's architectural history in connection with the country's cultural past and present. Thurley investigates well-recognisable architectural styles—Saxon, Tudor, Georgian, Regency, Victorian and Edwardian—and considers what these styles might reveal about peoples' ideas, beliefs and aspirations. He also notes how peoples' tastes led to architectural advancements, both in structural performance and aesthetic effect, of their respective periods.

William Collins, November 2013  
(hardback)  
ISBN: 978-0007301409



# Roll of Donors



We would like to express our sincere thanks and appreciation to all those who have supported the College over the past year.

This Roll of Donors lists those who have supported the College or the American Foundation for Royal Holloway and Bedford New College between 1st August 2012 and 31st July 2013. This includes both new gifts received during the Alumni Fund Campaign and regular gifts pledged during previous campaigns which were received during this fiscal year. The Roll also lists donors who supported memorials, individual scholarships, bursaries and other fundraising initiatives in the last year. If you are regularly giving by Direct Debit or Standing Order, your name will appear in the Roll of Donors each fiscal year that payments are made.

We would also like to thank our many donors who have chosen to remain anonymous.

Alumni donors are listed firstly by College and then by year of graduation (of their first degree, if applicable). Whilst every effort has been made to ensure that all gift details are correct, please inform us of any errors or omissions.

If you would like to make a gift to the College and to join our Roll of Donors, please contact the Development and Alumni Relations team on **+44 (0) 01784 414478** or email **alumni@rhbc.ac.uk**

## Giving Circles

The College has established giving circles to thank and recognise all its donors. We would like to publish the names of donors according to their giving circle in the forthcoming annual report and in subsequent issues of Higher magazine. Please let us know if you would prefer to be excluded from the giving circles or for your gifts to be anonymous. For more information about the giving circles, please visit **royalholloway.ac.uk/giving**

## The Alumni Cabinet

Our alumni trustees of The Alumni Fund are:

Su Bryant, Margaret Chadderton, Christine Chan, Dave Cobb, Jon Cutter, Doug German, Singh Gill, Lynette Goddard, Helen Groenendaal, Chris Howorth, James Lambert, Sarah Moffat, Clare Munton, Nigel Rata, Hollie White and Piers Wilson.

## Key

Red – new donors

Bold – 3 year consecutive donor

## Bedford College

### 1939

Mrs Margaret Williams (née Landon)

### 1947

Miss Molly Jones

### 1948

Miss Barbara Lees

Miss Patricia Raikes

Miss Sonja Zentner

Mrs Janet Fenwick (née Pelly)

Mrs May Gregory (née Philbey)

Mrs Ruth Ward (née Tagg)

### 1949

Miss Jane Neely

Mrs Barbara Abbott (née Clough)

### 1950

Miss Barbara Wadie

Miss Edith Chester

Miss Gwen Steel

Miss Laura Bristol

Mrs Lucy Channon (née Clarke)

Mrs Molly Hornby (née Taylor)

Mrs Peggy Awati (née Hyden)

Mrs Ruth David (née Oppenheimer)

Mrs Sheila Simmons (née McGill)

### 1951

Dr Ruth Griffiths (née Thresh)

Lady Hazel Giffard OBE (née Roberts)

Miss Betty Coles

Miss Valerie Evans CBE

Mrs Cynthia Richmond (née Goodliffe)

Mrs Margaret Burgess (née Johnson)

### 1952

Dr Jacqueline Simpson

Miss Elizabeth Fudakowska

Mrs Jean Rollason (née Woodford)

Mrs June Lewis (née Teasdale)

Mrs Margaret Dobson (née Marsh)

Professor Jennifer Shay (née Walker)

### 1953

Mrs Jennifer Hewitson (née Copeman)

Mrs Margaret Mills (née Green)

Mrs Marian Milne (née Ward)

Mrs Monica Coles (née Williams)

Ms Jean Batstone

### 1954

Miss Janice Hendey

Miss Joan Edwards

Mrs Hilary Stannard (née Chute)

### 1955

Dr Dorothy Foster

Mrs Liz Benton (née Hammond)

Mrs Molly Poulter (née Mountfort)

Mrs Muriel Brindley (née Hodgkinson)

Mrs Pat Taylor (née Pritchard)

Mrs Rosemary Pegg (née Gollifer)

Mrs Valerie Boyd (née Gould)

Ms Doris Turck

### 1956

Miss Charlotte Houlton

Miss Nancy Bridgford

Mrs Marianne MacQueen (née Packer)

Mrs Mary Hicks (née Jennings)

Mrs Pat Curtis (née Kille)

Mrs Pauline Potts (née Stow)

Mrs Sue Glasspool DL (née Goode)

### 1957

Miss Patricia Johnson

Mrs Anne Coppen (née Corker)

Mrs Barbara Hodgson (née Silburne)

Mrs Elaine Wade (née Cook)

Mrs Shirley Ellins (née Truswell)

### 1958

Dr Diana Barnes (née Campbell)

Miss Mary Shakeshaft

Mrs Carol Reader (née Barnes)

Mrs Gillian Bayliffe (née Gostling)

Mrs Jean Mitchell (née Talintyre)

Miss Jennifer Sherwood (née Allard)

Mrs Judith Eaton (née Kirby)

Mrs Margaret White (née Atmore)

Mrs Marielle Pender (née Schwabacher)

Miss Valerie Welsh (née Dean)

Ms Clare Goymier

### 1959

Dr Eileen Mason (née Temperley)

Mrs Ann Fuller (née Clark)

Miss Caroline Reynolds (née Bury)

Miss Janet Chamberlain (née Thistlewood)

Mrs Judith Bundy (née Pinner)

Mrs June Smith (née Parrott)

Mrs Rosalind Dolton (née Chamings)

Mrs Ruth Foxman (née Senior)

### 1960

Dr Daphne Self (née Davies)

Dr Thelma Fallon (née Neville)

Miss A Jean Norris (née Francis)

Mrs Angela Howorth (née Davies)

Mrs Anna Sladden (née Matthews)

Mrs Celia Whittome (née Goulding)

Mrs Georgina Nicholson (née Chilcott)

Mrs Heather Richardson (née Preston)

### 1961

Air Commodore Ruth Montague FRSA

(née Griffiths)

Mrs Diane Hible (née Inman)

Mrs Jean Golden (née Harris)

Professor The Reverend Frances Young OBE

(née Worrall)

### 1962

Dr Bridget Baker

Dr Eirian Davies

Miss Christine Mingay

Miss Marion Hardy

Mrs Angela Pearson (née Richards)

Mrs Anne Odams (née Harris)

Miss Caroline van Tienen (née Maclure)

Mrs Christine Maton (née Smith)

Mrs Elizabeth Hurfurt (née Ellis)

Mrs Florence Sale (née Hilton)

Mrs Gillian Clarke (née Grice)

Mrs Mary Shepherd (née Le Min)

### 1963

Miss Elaine Bimpson

Mrs Rosemary Hill (née Ladd)

Professor Pauline Smith

### 1964

Dr Elizabeth Dron

Dr Kathryn Brown (née Underhill)

Dr Mary Munro-Hill (née Munro)

Dr Sylvia West (née Brown)

Mrs Brenda McWilliams (née Chapman)

Mrs Carolyn Faulder Bainton (née Calburn)

### 1965

Dr Therese Cory (née Khouri)

Emeritus Professor Karen Lyons (née Hamilton-Smith)

Miss Angela Hobsbaum

Miss Florence Rayner

Miss Janet Turner

Miss Rachel Whittaker MBE JP

Miss Rosemary Bowman

Mrs Barbara de Ferry Foster (née Robson)

Mrs Janet Hunnisett (née Stevenson)

Mrs Jean Waldman (née Wadsworth)

Mrs Joan Gowling (née Izzard)

Mrs Liz Slater (née Raymont)

Mrs Shane Godbolt (née Spanner)

Mrs Tessa Roxburgh (née Bredy)

### 1966

Mrs Carol Bostock-Smith (née Masters)

Mrs H Capon

Mrs Sylvia Jones (née Heller)

### 1967

Dr Ann Priston OBE JP (née Vodden)

Miss Ena Johnson

Miss Jill Iveson

Miss Nicola Marlow

Miss Anne Stuart (née Pilkington)

Mrs Caroline Garthwaite (née Willbourne)

Mrs Christine Peach (née Mohr)

Mrs Jeanne Langley (née Soloman)

Mrs Susan Chesters (née Still)

Mrs Valerie Button (née Davey)

The Baroness Warwick of Undercliffe

### 1968

Dr Elizabeth Margosches

Miss Frances Dimond

Miss Jackie O'Rourke

Miss Marlene Burt

Mrs Alison Steedman (née Craine)

Mrs Angela Rogers (née Smith)

Mrs Ann Edet (née Benoy)

Mrs Janet Vann (née Lavers)

Mrs Jean Conley (née Adams)

Mrs Penny Wood (née Irish)

Mrs Rosemary Hill (née Gardner)

Mrs Sally Walker (née Bailey)

Mrs Sandra Periton (née Gale)

Mrs Sarah Tyacke CB (née Jeacock)

### 1969

Dr Mike Golden

Mr Tim Coghlan

## Fencing Cub



The money kindly provided by the alumni will allow for the Royal Blades Fencing Club to provide more lamés for our three teams of fencers. A lamé is a conductive jacket worn by foil and sabre fencers which defines the target area in these two weapons. The lamé allows for scoring of hits in a bout to register via the electric current; this is known as 'electric' fencing. In Sabre Fencing the lamé covers the body from the waist up and in foil fencing the entire torso is covered. The main impact this will have will be to allow all three teams of fencers to fence electric at the same. Currently the Club only has enough lamés to provide two of the teams' full electric kit.

We are extremely pleased to receive this Alumni Fund grant as it will allow a greater number of club members to fence electric which vastly improves an individual's skill compared to fencing non electric. This will also transfer into the club training more experienced members which will increase the number of BUCs points scored in University matches and improve the legacy of the Royal Holloway Fencing Club.

**The Fencing Club**

Mrs Anne Almond (née Evans)  
 Mrs Christine Mortimer (née Allinson)  
 Mrs Jean Fisher (née Thwaites)  
 Mrs Lorna Smart (née Howson)  
 Mrs Meryl M Darkins (née Morris)

### 1970

Miss Judith Hodson  
 Miss Pat Howell  
 Mr Brian Roe  
 Mrs Margaret Du Boulay

### 1971

Dr Susan Bradbury  
 Mrs Bridget Doughty (née Singleton)  
 Mrs Susan Whitham (née Green)  
 Mrs Vivienne Ferris (née Rowbury)

### 1972

Dr Ann Wroe (née Bristow)  
 Mr Jonathan Hale  
 Mr R Lanwarn  
 Mrs Chris Foote (née Lewis)

### Mrs Hilary Freeman (née Faker)

Mrs Nini Murray-Phillipson  
 Ms Val Dunford (née Williams)

### 1973

Dr Carol Varlaam  
 Dr Greg Chapman  
 Mr Barry Jupp  
 Mr Bryn Gittins  
 Mr Ian Bruton  
 Mr John Skinner  
 Mr Richard Bradbury  
 Mr Rob Childs  
 Mrs Elizabeth Cairncross (née Bridgland)  
 Mrs Patricia Crowson (née Hunter)  
 Mrs Sue Holmes (née Lucas)  
 Mrs Yvonne Craggs (née Charlton)

### 1974

Mr Alan Peasgood  
 Mrs Julie Waldron (née Oliver)  
 Mrs Marie Erwood MBE (née Burman)  
 Mrs Wendy Congreve  
 The Reverend Canon John Brown

### 1975

Dr Astrid Gregor (née Weld)  
 Miss Janet Hunt  
 Mr Anthony Kaiser  
 Mrs Priscilla Lawrence (née Stock)

### 1976

Mr Adrian Machiraju  
 Mr Anthony Loring  
 Mr David Robinson OBE  
 Mr Stephen Stewart  
 Mrs Carolyn Hill (née Whittle)  
 Mrs Nicola Fox (née Perkins)  
 Ms Jocelyn Leigh  
 Professor Megan Holmes

### 1977

Miss Aruna Gooneratne  
 Miss Miriam Braham  
 Mrs Eileen Vielvoye  
 Mrs Gaynor Easter (née Lawton)  
 Mrs Hilary Clifton (née Wilson)  
 Mrs Jane Jones (née Parry)  
 Mrs Rachel Scurr (née Harker)  
 Mrs Sally Keith (née Border)  
 Mrs Wendy Mullins (née Miles)  
 Professor Martin Buck FRS

### 1978

Miss Vivienne Perkins  
 Mr Crispin Manners  
 Mr Roy Harrow  
 Mrs Mohana Mahes  
 Mrs Paola Antonioni-Nutt (née Antonioni)

### 1979

Dr Brigitte Vale  
 Miss Clare Blakeway-Phillips  
 Mrs Belinda Smith (née Richards)  
 Mrs Caroline Alexander (née Hill)  
 Mrs Evelyn Ross (née Joseph)

### 1980

Miss Gillian Wood  
 Miss Jennifer Cook  
 Mrs Antonia Cooper

Mrs Christian O'Morchoe (née Forbes)  
 Mrs Linda Caldwell (née Harmes)  
 Mrs Sarah Caldwell-Nichols (née Lovering)  
 Mrs Valerie Duggan (née Cowmeadow)  
 Ms Gill Ereat

### 1981

Dr Marion Thompson  
 Miss Elizabeth Sherbrooke  
 Mr David Matthews  
 Mr Geoffrey McCann  
 Mrs Helen Holmes  
 Mrs Kelly Cole (née Thompson)

### 1982

Miss Janis Coatsworth  
 Mr Federico Bonfanti  
 Mrs Christine Black (née Sheehan)  
 Mrs Deborah Fisher (née Westover)  
 Mrs Denise Purdy (née Forno)

### 1983

Mrs Katy Kemp (née Evison)  
 Mrs Mirella Gilpin (née Hogan)  
 Mrs Suzanne James (née Morrison)  
 Ms Ruth Mercer

### 1984

Miss Cathy Daw  
 Miss Vera Freeburne  
 Mr Clive Brown  
 Mrs Louisa Warren (née Zacaroli)  
 Mrs Sally Jones (née Wortelhook)

### 1985

Dr Clive Edmonds  
 Mr Christopher Wright  
 Mr Paul Dorman  
 Mrs Adele Hayward (née Price)  
 Mrs Hala Alireza

### 1986

Dr Angela Aitken (née Crew)  
 Dr Keith Maslin  
 Mr Alexander Thomas  
 Mr Francis Langmead  
 Mr Matthew Edwards  
 Mr Nicholas Edwards  
 Mrs Diana Boxall (née Everitt)  
 Mrs Donna Lincoln-Ohrstrand  
 Mrs Helena Horgan (née Willis)  
 Mrs Kate Sabisky (née Brasher)  
 Mrs Katharine Gibbon (née Shaw)  
 Mrs Susan Jones (née Atkinson)  
 Mrs Wendy Dopheide (née Draper)  
 Ms Christina Strunks  
 Ms Claire Allen

### 1987

Dr Robert Gilmore  
 Dr Ursula Lawrence (née Byrne)  
 Miss Alicia Francis  
 Mr Claudio Marioni  
 Mr Roderic Morgan  
 Mr Sanjay Patel  
 Mrs Christine Titman (née Grant)  
 Mrs Heather Marchant (née Rees)  
 Mrs Judith Santry (née Glanville)  
 Mrs Judith Talbot (née Kirkbride)  
 Mrs Kathryn Maple (née Wyatt)  
 Mrs Sally Powell (née Evans)



Mrs Sarah Shafto (née Sharpe)  
**Mrs Soulla Kakoullis (née Koundouri)**  
**Ms Suzie Silver**

## 1988

**Miss Jeni Willsher**  
**Mr David Myles**  
Mr Dominic Dibiasé  
**Mr Jeremy Macdonald**  
Mr Jonathan Cordery  
**Mr Michael Cock**  
**Mr Michael Tuckett**  
Mrs Christine Wilkinson (née Gandhi)  
**Mrs Felicity Kay (née Caunter)**  
Mrs Julia Rouse (née Robinson)  
Mrs Pamela Hornsby  
**Mrs Ruth Hosker (née Chesmore)**  
Mrs Vronwyn Hutch (née Thompson)  
Ms Clair Michael  
Ms Helen Grime

## 1989

Dr Regina Pauli  
Miss Fiona Pugsley  
Miss Patricia Nnoka  
**Mr Aiden Coloe**  
Mr Andrew Newton  
**Mr Kurt Benson**  
**Mr Riz Ullah**  
Mrs Cathy Johnson (née Halford)  
Mrs Julia Blades (née Law)  
**Mrs Ramona Lamport (née Khambatta)**  
**Mrs Trudi Oseman (née Russell)**  
Ms Lynda Tanner (née Bird)

## 1990

Dr Ruth Kirk (née Lee)  
**Miss Alison Hope**  
**Miss Annabel Fleming**  
**Miss Nicky Matthews**  
**Mr Al Stanton**  
**Mr Christopher Noble**  
**Mr Daniel Walker**  
Mr Geoffrey Finch  
**Mr Justin Paul**  
Mr Patrick Busby  
**Mr Timothy Hayes**  
**Mrs April Harper**  
Mrs Caroline Clarke Fleming (née Clarke)  
Mrs Elizabeth Oxborrow-Cowan (née Oxborrow)  
Mrs Sylvia Fennell (née Fletcher)

## 1991

Miss Helen Nicholson (née Farr)  
**Mr Christopher Dunne**  
**Mr Jeremy Piper**  
**Mr Neil Colman**  
**Mr Peter Harwood**  
**Mr Peter Keating**  
Mr Russell Adfield  
Mrs Claire McCann (née Watchman)  
**Mrs Giny Jack (née Robson)**  
**Mrs Penelope Gravestock (née King)**  
Ms Kathryn Kneale

## 1992

Dr Joanna Watkins (née MacNamara)  
Miss Sara de Neut  
Mr Christian Marriott  
**Mr David Overton**  
**Mr Gursharanjit Gill**

**Mr Keith Farnish**  
**Mr Paul Basham**  
**Mr Paul Kittel**  
**Mr Peter Hind**  
**Mr Prushad Patel**  
Mrs Bridget Radford (née Reeves)  
**Mrs Hazel Brown**  
**Mrs Julia Mitchard (née Barrett)**  
Mrs Katharine Brindley (née Armitage)  
**Mrs Linda Burke (née Kennedy)**  
**Mrs Mandy Warren (née Pelly)**  
**Mrs Stephanie Paparizos (née North)**

## 1993

**Dr Louise Thomas**  
**Dr Timothy Powell**  
**Miss Michelle Gahagan**  
**Mr Alasdair Coutts-Britton**  
**Mr Daniel Hilton**  
**Mr Phil Davies**  
Mr Simon Herbert  
**Mr Tony Lynch**  
Mrs Elizabeth O'Sullivan  
Mrs Felicity Osmond (née Osmond)  
**Ms Sarah Atchia-Green (née Atchia)**

## 1994

**Dr Adrian Jobson**  
**Dr Jonathan Durrant**  
**Dr Richard Aw**  
**Dr Richard Lloyd**  
Miss Linda Massie  
**Miss Sara Hollowell**  
**Mr Barry Payne**  
Mr Daniel Bell  
**Mr Edward Hammond**  
**Mr Guy Wheeler**  
Mr Jonathan Daniels  
Mr Mohammad Negargar  
Mr Naresh Shah  
Mr Sassan Farahani  
**Mr Scott Matthewson**  
Mr Scott Rose  
Mr Sean Scaplehorn  
**Mr Timothy Reeve**  
**Mr Tobin Wallace-Sims**  
Mrs Clare Breed (née Smith)  
Mrs Deborah Templing (née Pope)  
**Mrs Margaret Kidd**  
Mrs Sarah Chapman (née Carrell)  
**Ms Rosemary Ritchie**

## 1995

Dr Naomi Barker  
**Dr Nina Parish**  
**Dr Penny Tucker (née Holland)**  
**Miss Allison Verrall**  
Miss Cristina Harrison  
Miss Lara Jelliff  
Miss Lisa Chandler  
**Mr Andrew McCrum**  
Mr David Miles  
**Mr Declan White**  
**Mr Francis Ruiz**  
**Mr Jamie Gavin**  
**Mr Kwong Loke**  
Mr Piers Wombwell  
**Mr Tom Courtenay-Evans**  
**Mrs Alison McKinlay (née Aldridge)**  
Mrs Andrea Metcalfe (née Prichard)  
Mrs Andrea Rice (née Greenwood)

**Mrs Catherine Pomeroy (née Parry)**  
Mrs Claire Miles (née Farrell)  
Mrs Clare Cohen  
**Mrs Eileen Soden**  
Mrs Jacqueline Debromhead (née Phillips)  
**Mrs Jane Gibney**  
**Mrs Linda Stasiuk**  
**Mrs Victoria Adams (née Watt)**

## 1996

Dr Anthony Griffin  
Dr Carolyn McMillan (née Barltrop)  
**Miss Deborah Monksfield (née Davis)**  
**Miss Helen Groenendaal**  
**Miss Janet Carlsson**  
Miss Kate Wilson  
**Mr Andrew Fairmaner**  
**Mr Chris Howorth**

## Competing at an international level Taekwondo



Taekwondo is a Korean Martial art and it is the most popular martial art in terms of the number of practitioners worldwide. I compete in the Poomsae aspect, where focus, finesse and stability are needed to show off a sequence of movements to the best of the athlete's ability. I have practised Taekwondo for twelve years and have ten National titles, and have medalled in competitions across the globe and have represented Great Britain at five previous World Championships and two European Championships. I have been selected to represent Great Britain at the World Taekwondo Poomsae Championships in Bali, Indonesia and the donation from the Alumni Fund is enabling me to follow my passion and compete at the highest level possible in my sport. I am hoping to break into the Top 8 at the World Championships, which would make me the first British athlete in my division to achieve this.

**Guntur Dwiarmein** (Economics and French undergraduate)

## RHUL Bears Hockey Club



The RHUL Bears Hockey Club has more than 100 active members this year, with three ladies' teams and two men's teams competing in the BUCS and LUSL leagues. Maintaining their safety is a key priority in this high-risk sport and with the help of the Alumni Fund we have been able to purchase four face masks for penalty corners and a replacement goalkeeper's mask for the ladies' teams. The face masks will be distributed between the two first teams in the club and will help to prevent facial injuries during short corners, where the defensive players are more vulnerable if the ball is lifted at the goal. The club currently owns two ladies goalkeepers' kits and two men's kits, although some of these are incomplete. The helmet on one of the ladies kits broke during our last season, leaving the wearer more vulnerable to injury. With the donation from the Alumni Fund we have been able to replace this helmet and ensure that we are keeping our players as safe as possible. The Hockey Club, especially the goalkeepers, would like to thank the Alumni Fund for providing us with the means to provide the highest level of protection we can give to our players.

**The RHUL Bears Hockey Club**

**Mr Dan Savill**  
**Mr James Harden**  
 Mr Obinna Ogbuehi  
**Mr Peter Brown**  
**Mr Piers Wilson**  
 Mr Sergio Solorzano  
 Mr Timothy Pipe  
 Mrs Karin Cutler  
 Mrs Kirsty Alke  
 Mrs Mary Crawley (née McGillicunny)  
**Mrs Nan Robertson**  
**Ms Julia Beer (née May)**

### 1997

**Dr Mark Lloyd Davies**  
 Miss Anna Mignot  
 Miss Ciara Roberts  
**Miss Eleri Davies**  
**Miss Helen Taylor**  
**Miss Lilian Kan**  
 Miss Mahbuba Chowdhury  
**Miss Violet Lake**  
**Mr Andrew Everitt**  
**Mr Anthony Faulkes**  
 Mr Ashley Huish  
**Mr Craig Hassey**  
**Mr James Hill**  
**Mr Jamie Carroll**  
**Mr Jason Duncan**  
**Mr Jonathan Hayes**  
**Mr Martin Nowak**  
**Mr Michael Maccarthy**  
 Mr Nicholas Perryman  
**Mr Paul Lewis**  
**Mr Philip Cox**  
**Mr Tris Hillier**  
**Mrs Jenny Knight (née Humphreys)**  
 Mrs Myrnel Abdullahi (née Flanders)  
 Mrs Nicola Faulkner (née Ford)  
**Mrs Sarah Harris (née Merryman)**  
**Ms Deana Murfitt**

### 1998

Dr James Yorke  
 Dr Michael Durban  
 Miss Adele Cross  
**Miss Clare Phillips**  
 Miss Elena Phylactou  
**Miss Emily Burningham**  
**Miss Laura Tucker**

Miss Sophie Gilbert-Desvallons  
 Mr Alex Sherman  
**Mr Charles Brook**  
 Mr Mohammed Chaudry  
 Mr Ollie Bishop  
 Mr Paul Chu  
 Mr William Thomas  
 Mrs Angela Watts (née Bloor)  
**Mrs Ann Andrews**  
 Mrs Helen Close (née Britton)  
 Mrs Lucy Butcher (née Hieatt-Smith)  
 Mrs Sarah Travaglini (née Osterbery)

### 1999

Miss Katie Armstrong OBE (née Armstrong)  
**Mr Chris Conneely**  
**Mr David Preston**  
**Mr David Pybus**  
**Mr Hugh Willoughby**  
 Mr Martin Beck  
 Mr Martin Le Blanc  
**Mr Nick Harris**  
 Mr Ralph Gottman  
**Mr Saul Grant**  
 Mrs Heidi Bishop (née May)  
 Mrs Jo Montague-Smith (née Smith)

### 2000

Dr Sarah Hamlyn-Wright  
**Miss Alex Dean**  
 Miss Iliana Stamogiannou  
 Miss Inês Trindade  
 Miss Nathalie Muller  
 Miss Pamela Thompson  
**Miss Sarah Carty**  
 Miss Serena Van Sickle  
 Mr Dale Lewis  
**Mr Douglas Errington**  
**Mr Edward Stevenson**  
**Mr James Adams**  
 Mr John Maskell  
 Mr Markus Siivola  
 Mr Michael Harris  
 Mr Rajiv Bajoria  
 Mr Rick Travers  
**Mr Stephen Rouse**  
**Mr Stuart Barnes**  
**Mr Tsz Chun Lui**  
**Mr William Brooksopp**  
**Mrs Caroline Towe (née Travis)**

Mrs Jo Smith (née Field)  
 Mrs Josephine Smith  
**Mrs Marie-Helene Smith (née De Almeida)**  
**Mrs Naomi Davies**  
 Ms Jane Chappell (née Jones)  
**Ms Janet Smith**  
 Ms Zoe Edwards

### 2001

Dr Andreas Meitanis  
 Dr Pirkko Koppinen  
**Miss Katherine Clements**  
 Mr Akihiro Kanamori  
**Mr Andrew Hainault**  
**Mr David Cropley**  
**Mr David Shepherd**  
**Mr Matthew Parker**  
**Mr Myooressh Maheswaran**  
**Mr Stephen Hatfield**  
 Mr Stuart Small  
**Mrs Abiola Folorunso**  
 Mrs Carey Dodah (née Evans)  
**Mrs Christine Briggs**  
 Mrs Ellie Watts (née Thomas)  
**Mrs Emma Cardoso (née Smith)**  
**Ms Louise Jones**

### 2002

**Miss Julia Bates**  
**Mr Andrew Stephenson MP**  
 Mr Charles Chantler  
**Mr Christopher Wayne**  
**Mr Joel Barrick**  
**Mr Jonathan Hewines**  
**Mr Oliver Rippier**  
 Mr Paul Symes  
**Mr Robin Emerson**  
**Mr Steven Perkins**  
 Mrs Gemma Dixon (née Barnetson)  
**Mrs Katharine Boddy (née Marshall)**  
**Mrs Victoria Ryan (née Breslin)**

### 2003

Dr Joanne Dickson  
 Miss Stephanie Foxwell  
 Mr Graham Clarke  
**Mr Howard Spargo**  
**Mr Matthew Searle**  
 Mr Raminder Dhendsa  
 Mr William Bird

Mrs Victoria Kingstone (née Pallot)

## 2004

**Dr Dennis Nigbur**  
**Miss Charlotte Cox**  
Miss Ella Paremain  
**Miss Jacqueline Bolton**  
**Miss Rachel Chillag**  
Mr Andrew Radford  
**Mr Gerald Moulton**  
**Mr Graeme Brookes-Butt**  
**Mr Iain Pavely**  
**Mr Liam Tullberg**  
**Mr Paul Bowen**  
**Mr Peter Le Grys**  
Mr Robert Beecroft  
Mr Robert Epstein  
Mrs Christine Lever  
**Mrs Doreen Bravery**  
Mrs Lorraine Hope  
**Mrs Rachel Hamlyn (née Beynon)**

## 2005

**Dr Benjamin Golant**  
Miss Amy Hope  
Miss Katie Bracher  
**Mr Jonathan Broad**  
**Mr Michael Arnell**  
Mr Paul Kinninmont  
Mr Stephen Hughes  
**Mr Vincent Hughes**  
Mrs Margaret Bird

## 2006

**Miss Katie Orr**  
Mr Andrew Van Cuylenburg  
**Mr Colin Hodge**  
Mr David Millinger  
Mr Shagun Madhikarmi  
Mrs Kate Higgins (née Willson)  
Ms Andra East

## 2007

Miss Amy Fode  
Miss Amy Knowles  
**Miss Claire Leonard**  
Miss Clementine Mortelman  
Miss Eleanor Jayne Grey  
Miss Gemma Ainge  
Miss Hsiu-Chin Liu  
**Miss Martina Owusu-Boahen**  
**Miss Rachel Buckle**  
Miss Sarah Nield-Dumper  
**Miss Yasamin Alabaf-Sabaghi**  
Mr Christopher Grammer  
**Mr Christopher Hunter**  
Mr Guido Reinke  
**Mr Iain Davis**  
**Mr Joff Manning**  
**Mr John Parry**  
Mr Matthew Quish  
Mr Paul Davis  
Mr Simon Arnell  
**Mrs Elizabeth Edmunds**  
Ms Julia Shore

## 2008

Miss Bryony Hammond  
Miss Ceyhan Djevat  
Miss Danielle Blackie  
Miss Emma Cussans

**Miss Erin Walters**  
**Miss Francesca Gardiner**  
**Miss Joanne Costa**  
Miss Manpreet Brar  
Miss Naomi Jane (née Donald)  
**Miss Stephanie Gardiner**  
Mr Adam Cadoo  
Mr Adam Morley  
**Mr Alexander Kahn**  
**Mr Daniel Langley**  
Mr Jahan Khan  
Mr Nassim Malti  
Mr Stefan Chrysostomou  
**Mr Zeeshan Zakaria**  
**Mrs Gloria Gonzalez-Vallejo**  
Mrs Rachel Richardson (née Stockham)

## 2009

Miss Annette Miller  
Miss Eloise Pinchera  
Miss Francesca Napier  
**Miss Helen Carey**  
**Miss Jennifer Parkes**  
Miss Jennifer Sullivan  
Miss Laura Clemens  
**Miss Maria-Luiza Dumitrescu**  
Miss Natalie Sykes  
**Miss Ruth Naylor**  
Mr Benjamin Phillips  
Mr Duncan McLaughlan  
Mr Graham Carton  
Mr James Wilder  
**Mr Mario Creatura**  
Mr Mick Andrew Bre Delap  
**Mr Peter Chapman (née Chapman)**  
Mr Will Deane

Mrs Kelly Jones  
**Ms Ancuta Asandei**  
**Ms Regina Atsu**

## 2010

Dame Ann Bowtell DCB  
Miss Caroline Daw  
Miss Fiona Redding  
**Miss Jennifer Rich**  
Miss Joanna Swiatek  
Miss Rachel Pearson  
Mr Bilal Abbasi  
Mr Kuldeep Sungher  
Mr Yasir Abbasi (née Abbasi)

## 2011

Miss Anastasia Bugrova  
Miss Ashleigh Brown  
Miss Ellie Watts  
Miss Jennifer Mark  
**Miss Katy Wellicome**  
Miss Maryam Al-Faruque  
Miss Narin Aker  
Miss Rebecca Lawrence  
Miss Sophie Aynsley  
Mr Bruce Rhodes  
Mr Christophe Hobden  
Mr David Cobb  
Mr David Griffin  
Mr Duncan Eaglesham  
Mr Guy Dunkley  
**Mr Nick Stylianou**  
Mr Rajiv Badal  
Mr Samuel Hancock

## RHUL Bears American Football Flag Football



We would like to thank the Alumni Fund and their donors for funding our 'Flag Football in Schools' project. This donation will allow the club to set up a flag football league, a five-a-side, non-contact version of American football open to both genders, within surrounding schools with the aim of increasing young people's participation in sport. This project will see members of the club go to local schools to teach flag football before giving the schools all the resources necessary to run the initiative on their own. The funding will allow the team to provide and donate all the necessary equipment to the schools including American footballs and flag belts whilst giving the opportunity to members of the club to pursue coaching opportunities at the schools. We also hope to be able to host a summer tournament at Royal Holloway allowing for the schools to compete against one another. This project will be run with the goal of encouraging teenagers to stay in sport, offering them a fun, new and unique activity to what they are currently offered in schools. With the success of our newly formed Women's team, who finished second nationally last season, we hope to particularly engage young females who are up to six times more likely to drop out of sport than boys.

**The RHUL Bears American Football Club**



## Community Action London Student Volunteering Fortnight



Community Action has just celebrated 10 years of service to the community, during which more than 50,000 hours of volunteering have been completed. Each year London universities join forces to offer students a wide range of exciting volunteering opportunities, and to raise the profile of student volunteering. Royal Holloway formed part of the West London team, who used local shop units to interact with the general public, promote student volunteering through various displays and planned activities, and as a base for a number of good deeds within the community. Community Action used a well-positioned unit in Egham High Street in November, a busy time of year for shoppers in the run up to Christmas. This is the first time Community Action has organised such a venture, and it was only made possible through the generous support of the Alumni Fund.

All student volunteering contributes towards achieving the Royal Holloway Passport Award, the team involved with leading this initiative received Passport Gold points.

**The Community Action Team**



### 2012

Dr Kate Sherratt  
Miss Catriona Burniston  
**Miss Gemma Hunt**  
Miss Ilona-Jade Errington  
Miss Lavinia Singer  
Miss Natalie Wren  
Miss Rebecca Johnson  
Mr Aleksander Romaniuk  
Mr Ashley Coates  
Mr Daniel Garbutt  
Mr Jack Baker  
Mr Kenneth Aruwa  
**Mr Lewis Bassett-Butt**  
**Mr Rohit Chopra**  
Ms Melissa Jack

### 2013

Dr Anton Poot  
Dr John Prebble

### Miss Patricia Brown

Mr James Allman-Talbot  
Mr John Wenger  
Mrs E. Joy Whitfield  
Mrs Ndifreke Umoren

## Royal Holloway College

### 1940

Mrs Thora Nicol (née Burnley Jones)

### 1943

Miss Ann Harold  
Miss Gillian Harris

### 1944

Miss Betty Belton  
Mrs Margaret Green (née Hall)

### 1945

Dr Jan Harding (née Ansell)

### 1946

Miss Elaine Dando  
Mrs Enid Cowie (née Hulin)

### 1947

**Dr Doreen Cooke (née Hardy)**  
Mrs Dorothy Barnes (née Raistrick)  
**Mrs Jean Beedie (née Adams)**  
Mrs Jeanne Brown (née Davies)

### 1948

Mrs Diana Williams (née Tidman)  
Mrs Elizabeth Nash (née Valentine)

### 1949

**Miss Dorothy Stevens**  
Miss Joy Taylor  
**Miss Margaret Graham OBE**  
Mrs Hanna Singer (née Cohn)  
**Mrs Joan Trobe (née Richards)**  
**Mrs Margaret Pretty (née Armstrong)**  
**Mrs Susan Stiff (née Gill)**

### 1950

**Dr Joyce Andrews (née Toothill)**  
**Dr Sonia Parkinson (née Graham)**  
**Mrs Audrey Fisk (née Sanders)**  
**Mrs Doris Scotford (née Stephenson)**  
Mrs Jean Hewson (née Potter)  
**Mrs Joyce Crosfield (née Leigh)**  
**Mrs Molly Johnson (née Brown)**  
**Mrs Ruth Clarke (née Godwin)**  
**Mrs Sheila Hawton (née Fletcher)**

### 1951

Dr Mary Rice (née Restell)  
**Miss Audrey Hebb**  
**Miss Audrey Isherwood**  
**Miss Elizabeth Richards**  
**Miss Elizabeth Turley**  
Miss Enid Fisher  
**Miss Margaret Boaden**  
**Miss Sarnia Butcher**  
Mrs Elizabeth Lowe (née Jones)

### 1952

Dr Jeanne Buchanan (née Burford)  
Lady Maureen Robson (née Bullen)  
Miss Brenda Carpenter  
Miss Jean Forrester  
**Miss Marjorie Mellor**  
Miss Nina Trippier  
**Mrs Enid Simon (née Major)**  
**Mrs Joan Warrington (née Dixon)**  
**Mrs Joyce Maxfield (née Fothergill)**  
**Mrs Margaret Lander (née Hosking)**  
**Mrs Mary Herbert (née Chadwick)**

### 1953

Dr Monica White (née Mahoney)  
Miss Dorothy McArdell  
**Miss June Simpson**  
**Miss Patricia Cook**  
Mrs Barbara Braithwaite (née Young)  
Mrs Jean Eccleston (née Wilkins)  
Mrs Jean Hepton (née Turnham)  
**Mrs Margaret Hare (née Marschner)**

**Mrs Mary Larner (née Skutt)**

Ms Oonagh Lahr

## 1954

**Miss Dorothy Turley**

**Miss Elspeth McIntosh**

**Miss Jill Newlyn**

**Mrs Althea Leonard (née Foster-Brown)**

Mrs Brigid Knighton (née Carrothers)

Mrs Jacqueline Farley (née Wigmore)

Mrs Margaret Charles (née West)

**Mrs Margaret Kemp (née White)**

**Mrs Rosemary Bond (née Holt)**

**Mrs Sheila Cooper (née Gray)**

## 1955

**Miss Joan Barnett**

Miss Margaret Ash

**Miss Molly Thornton**

Miss Monica Smith MBE

**Miss Pat Moss**

Miss Ursula Rigg

**Mrs Elizabeth Williams (née Noyes)**

**Mrs Jean Langtry-Langton (née Leadbeater)**

Mrs Margaret Bindon (née Taylor)

**Mrs Margaret Seccombe (née Searle)**

Mrs Vivienne Hubbard (née Robinson)

**Ms Ann Deamer (née Jones)**

## 1956

Miss Annette Hall

Miss Gwyneth Thomas

**Mrs Anne Dockree (née Blease)**

Mrs Jennifer Cropley (née Hills)

Mrs Margaret Amsdon (née Burrell)

**Mrs Mary Grady (née Milnes)**

Mrs Patricia Jenkins (née Evans)

**Mrs Priscilla Gosnell (née Hughes)**

Mrs Rachel Hunter (née Roberts)

**Mrs Rosemary Mace (née Bougourd)**

**Mrs Sheila Keefe (née McKeone)**

## 1957

**Miss Beryl Bedford**

**Miss Enid Castle OBE JP**

**Miss Marjorie Sadler**

**Miss Pamela Grayson**

Miss Sylvia Newberry

**Mrs Barbara Mortlock (née Goulden)**

**Mrs Jacqueline Oliver (née Cross)**

## 1958

**Miss Mary Franklin**

Miss Sonia Norman

**Mrs Christine Medlow (née Reeve)**

Mrs Dorothy Bourne (née Norman)

**Mrs Eileen Adkins (née Start)**

Mrs Elizabeth Johns (née Neal)

Mrs Ishbel Kenningham (née Robertson)

**Mrs Monica Heywood-Kenny (née Lea)**

Mrs Ruth Miller (née Kenchington)

Mrs Ruth Waller (née Pearson)

Mrs Susan Stevenson (née Quibell)

Mrs Sylvia Lymbery

Mrs Vivienne Blackburn (née Smith)

## 1959

**Dr Elizabeth Brennan**

**Miss Ann Weeks (née Perry)**

**Miss Frances Wood**

Mrs Ann Bartlett (née Beermann)

**Mrs Beryl Lang (née Turner)**

**Mrs Betty Turner (née Cakebread)**

**Mrs Dorothy Wedge (née Grieves)**

**Mrs Elizabeth Walters (née Peck)**

Mrs Helen Simpson (née Wiseman-Shardlow)

Mrs Janet Morrell (née Yorke)

Mrs Jennifer Pilling (née Hobbs)

**Mrs Joan Glanville (née Denham)**

**Mrs Joan Smith (née Brand)**

Mrs Jocelyn Crocker (née Smith)

**Mrs Marion Cooper (née Andrews)**

**Mrs Sheila Fellows (née Carpenter)**

## 1960

**Mrs Anne Cooper (née Taylor)**

**Mrs Dzintra Gregory (née Blankenburgs)**

**Mrs Helen Marshall (née Wright)**

**Mrs Jean Routley (née Milton)**

**Mrs Jenifer Teasdale (née Done)**

**Mrs Jennifer Parry (née Hall)**

**Mrs Kay Huxham (née Burgess)**

**Mrs Mary Green (née Karn)**

Mrs Susan Turnbull (née Westhead)

Mrs Yvonne Le Grys (née Adams)

**Mrs Yvonne Morris (née Airdrie)**

**Ms Grace Crowhurst**

## 1961

**Miss Beryl Williams**

**Miss Gwendoline Coxon**

**Mrs Brenda Hill (née Kennedy)**

Mrs Christine Edwards (née HawkrIDGE)

Mrs Daphne Hall (née Senior)

**Mrs Dawn Bruin (née Perham)**

**Mrs Hilary Ballard (née Richards)**

**Mrs Janice Stocker (née Harvey)**

Mrs Marian McBride (née Young)

**Mrs Megan Miller (née Davies)**

**Mrs Pauline Moore (née Sabin)**

## 1962

Dr Shirley Hopkinson

**Miss Margaret Everitt**

**Mrs Ann Hulme (née Granger)**

**Mrs Ann Smith (née Sturgess)**

**Mrs Anne Jordan (née Miller)**

**Mrs Christine Topliss (née Gaultier)**

**Mrs Muriel Long (née Perkins)**

Mrs Pat Fletcher (née Tayler)

Mrs Valerie Lee (née Jenkin)

## 1963

**Miss Margaret Chadderton**

**Mrs Helen Cooper (née Mitchell)**

**Mrs Helen Outram (née Lewis)**

**Ms Leonora Polmouner**

## 1964

**Dr Owen Facey**

Dr Richard Hancock

**Miss Anne Dunton**

**Mrs Caryl Travess (née Jones)**

**Mrs Catriona Cleverley (née Hilton)**

Mrs Helen Davies (née King)

**Mrs Jean Partington (née Stewart)**

Mrs Krysia Cowell (née Pluta)

**Mrs Lynda Barker (née Robins)**

**Mrs Margaret Huntington (née Line)**

Mrs Tessa Wood (née Ormandy)

Mrs Valerie Colonna (née Taylor)

**Mrs Yvonne Burnett (née Klein)**

**Ms Ann Boon**

## 1965

**Miss Sally Mason**

**Mrs Caryll Martin (née Hall)**

**Mrs Christina Koenig (née Milward)**

Mrs Gillian Kingsman (née Hunt)

Mrs Jill Leggetter (née Dobson)

Mrs June Tresise (née Darlison)

Mrs Maria Twist (née Kurkiewicz)

**Mrs Rachel Smith (née Shaw)**

**Mrs Thelma Rowland (née Thompson)**

## 1966

Miss Diana Fawcett

**Mrs Angela Clarke (née Cook)**

**Mrs Anne Gardner (née Davis)**

**Mrs Diane Edmundson (née Bateman)**

**Mrs Gillian Davies (née Brewer)**

**Mrs Jean Tidy (née Watt)**

**Mrs Judith Bogie (née Sullivan)**

**Mrs Lucy Quinn (née Gower-Jones)**

Mrs Ruth Rice (née Perkins)

**Mrs Valerie Saint (née Smith)**

**Reverend Susan Johnson**

## 1967

Miss Jean Cooper

**Miss Judith Bucke**

**Mrs Carolyn Shaw (née Clark)**

Mrs Doreen Lindup (née Hacking)

**Mrs Irene Watson (née Birkbeck)**

Mrs Juliet Field (née Venables)

Mrs Sheila Hartley (née McJannet)

## 1968

**Dr Christine Hodgetts (née Randall)**

**Dr Robert Pearce**

**Miss Gillian Davey**

**Miss Liz Mountain**

**Mr Andrew McClure**

**Mr Andrew Plant**

**Mr Charles Turner**

**Mr Graham Almandras**

**Mr John Phillips**

**Mrs Christine Davies (née Mather)**

**Mrs Geraldine A Wickson (née Groombridge)**

**Mrs Joan McLean (née Buckley)**

Mrs Marianne Devereux (née Bailey)

**Mrs Tricia Bengé (née Christie)**

## 1969

Dr Cherrill Spencer

**Dr Laurence Julien**

**Miss Judith Rogerson**

**Mr Alan Stone**

**Mr Brian Lupton**

**Mrs Barbara Mangles (née Walker)**

Mrs Jean Bransby (née Barnaby)

Mrs Mary Birch (née Measures)

Mrs Pamela Stewart (née Carr-Woods)

**Mrs Sarah Woolhouse (née Briggs)**

**Mrs Susan Flowerday (née Cotter)**

Ms Carolyn Saunders (née Grant)

**Professor Alastair Hay OBE**

## 1970

**Dr Alan Buckle**

## Insanity Radio FM Going into the community



Insanity Radio 103.2FM is the College's student-run radio station. We are run by a committee of 17 students and currently have over 130 presenters who run weekly shows. In 2012, we began broadcasting on a Community Radio licence, also supported by the Alumni Fund, allowing us to broadcast on 103.2FM as well as 1287AM. This makes us one of only seven student radio stations to broadcast on an FM frequency. Unfortunately, our annual budget is somewhat limited; two thirds of it goes straight to our licensing costs leaving around £750 each year for investment in equipment, much of which is needed to maintain our studio equipment. The money granted by the Alumni Fund will allow us to purchase industry-standard equipment for outside broadcasts. Outside broadcasts allow us to engage directly with our audience, and we plan to do these from around campus and at local events. This grant will benefit both students and the local community by allowing them to engage more directly with Insanity Radio. As our primary captive audience is currently students, we hope that by covering local events we will help students integrate more with the local community.

**The Insanity Radio Team**

**Dr John Feltwell**  
Dr Nick Chandler  
**Miss Diana Randall**  
**Mr Christopher Nowakowski**  
**Mr Donald MacIntyre**  
**Mr Dougal Powrie**  
**Mr John Calder**  
Mr Peter Underwood  
**Mr Tim Stubbs**  
**Mrs Anne Whiteley (née Bailey)**  
**Mrs Bobby Smith (née Stockdale)**  
**Mrs Chris Ruge-Cope (née Ruge)**  
**Mrs Linda Smith (née Percy)**  
Mrs Mags Blackburn (née Young)  
Mrs Rosemary Ingram (née Scott)  
**Mrs Susan Haynes (née Steele)**  
**Ms Suzanne Beech**

### 1971

**Dr John Lillington**  
Dr Peter Cox

**Dr Tim Davies**  
**Miss Frances Thompson**  
**Mr Adrian Waddingham CBE**  
**Mr Bob Metcalfe**  
**Mr Gordon Taylor**  
Mr Iain Stinson  
**Mr Jim Reeve**  
Mr Stephen Smith  
**Mrs Denise Cannon (née Harris)**  
**Mrs Faith Boothroyd (née Millward)**  
Mrs Fran Payne (née Creed)  
**Mrs Julia Draper (née Catchpole)**  
**Mrs Kate Adair (née Hetzel)**  
Mrs Marilyn Burkett (née Taylor)  
Mrs Rhiannon Craig (née Jenkins)  
**Mrs Sarah Quail (née Peacock)**  
Mrs Susan Johnston (née Moseley)  
**Mrs Wendy Wilson (née McDonald)**  
Ms Rosemary George

### 1972

Dr Christine Rogers (née Waller)  
**Dr Robert Perkin**  
**Miss Glynis Owen**  
Miss Janet Pearson  
**Mr Brent Wilkinson**  
**Mrs Anita Fagan (née Hawkins)**  
Mrs Barbara Swift (née Worton)  
Mrs Christine Venables (née Hargreaves)  
**Mrs Gillian Crisp (née Cumber)**  
**Mrs Heather Carrington (née Cowell)**  
**Mrs Margaret Graham (née Dickson)**  
Mrs Sue Reeder (née Watson)  
Ms Rosemary Brotherhood  
**Professor Anne-Christine Davis**

### 1973

Dr Denise Lodge (née Lancaster)  
**Dr Martin Collier**  
**Dr Philip Jones**  
**Mr Alan Freeland**  
**Mr Bernard Gilhespy**  
**Mr Christopher Mills**  
**Mr Philip O'Brien**  
Mr Richard Stephens  
Mrs Annette Crook (née Bell)  
Mrs Christine Blacow (née Gibbon)  
**Mrs Elizabeth Tooke (née Valentine)**  
Mrs Janet Hutton (née Pulman)  
Mrs Joyce Tones (née Kyley)  
**Mrs Judith Powles (née Huse)**  
**Mrs Margaret Nicholls (née Bolton)**  
**Mrs Marjorie Gibbs (née Frost)**  
**Mrs Moira Digby**  
Ms Janice Ansbergs (née Crichton)

### 1974

**Dr Rowena Bunning (née Jones)**  
Dr Valerie Quarmby  
Miss Dora Marshall  
**Mr Andrzej Zieleniewski**  
**Mr Geoff Allan**  
Mr John Keelty CBE  
**Mr Jon Cutter**  
**Mr Kevin Mellor**  
**Mrs Ann Epps (née Bourdon)**  
**Mrs Helen Keelty (née Findlater)**  
**Mrs Joanne Stone (née Lee)**  
**Mrs Lesley Burch (née Campbell)**  
Mrs Linda Butler (née Fielding)

**Mrs Linda Gibson (née Beaumont)**  
Mrs Pam Pyke (née Gowen)  
**Ms Kay Bader**

### 1975

**Dr Ian Calvert**  
**Dr Margaret Edwards**  
**Dr Piers Plummer**  
Miss Ruth Newcombe  
**Mr Fraser Henderson**  
**Mr Graham Pearcey**  
**Mr Iain Ross**  
**Mr John Holden**  
**Mr Stephen Page**  
**Mrs Alison Woodhouse (née Collie)**  
**Mrs Elaine Bennington (née Medcalf)**  
**Mrs Elizabeth Cleary (née Goodchild)**  
**Mrs Helen Mudd (née Storey)**  
**Mrs Margaret Kingman (née Bright)**  
**Mrs Susan Robertson (née Oliver)**  
**Ms Elizabeth Taylor**

### 1976

**Mr Andrew Seal**  
**Mr David Wallace**  
**Mr David Watt**  
**Mr James Watkins**  
**Mr John Beresford**  
**Mr Keith Hider**  
Mr Keith Penfold  
**Mr Richard Puzey**  
**Mrs Anna Lipa (née Worth)**  
**Mrs Christine Thompson (née Oldland)**  
**Mrs Dorothy Druitt (née Adams)**  
**Mrs Gill Aitchison (née Green)**  
**Mrs Helen Janes (née Everson)**  
**Mrs Jenny Jones (née Upton)**  
**Mrs Margaret Forster (née Adey)**  
Mrs Melanie Michel (née Williams)  
Ms Jill Tombs (née Preston)

### 1977

**Dr Frances Gawthrop (née Trimming)**  
Dr John Goodwin  
**Miss Alison Pickard**  
Miss Gillian Sheldrick  
Miss Wendy Sutcliffe  
**Mr Fatahi Onibudo**  
**Mr John Mead**  
Mr Martin Dowling  
**Mr Richard Boreham**  
Mr Stuart Brown  
**Mrs Jacqueline Eriksson (née Hill)**  
**Mrs Jan Hall (née Bees)**  
**Mrs Katie Reeve (née Mathews)**  
Mrs Mary Myatt (née Ward)  
**Mrs Penny Williamson (née Whitburn)**  
**Ms Maire Davies (née Golden)**  
**Ms Sarah Potter**

### 1978

**Dr Janet Morter (née Holmes)**  
**Miss Liz Newton**  
Miss Susie Fletcher  
**Mr Gary Spruce**  
**Mr Martin Pickersgill**  
**Mr Paul Scarff**  
**Mr Peter Harrington**  
Mr Sean Russell  
**Mr Simon Jackson**



Mr Steve Long  
Mr Tony Hulatt  
Mrs Carol Maloney (née Sloman)  
Mrs Dawn Jewson (née Pierce)  
Mrs Elizabeth Jackson (née Gilbert)  
Mrs Fay Naylor  
Mrs Fiona Crutchley (née Hardy)  
Mrs Heather Hermes (née Haynes)  
Mrs Helen Jones (née Telfer)  
Mrs Jane Dawson (née Harvey)  
Mrs Jill McAdam (née Reffold)  
Mrs Joan Lewis (née McCarthy)  
Mrs Ruth Lloyd (née Jenkins)  
Ms Catrina Taylor

### 1979

Miss Sally Davis  
Mr David Aspinall  
Mr Edward Littlewood  
Mr John Coatsworth  
Mr Mark Isherwood  
Mr Nicholas Carr  
Mr Richard Crisp  
Mrs Anna Elliott (née Smith)  
Mrs Daphne Brooks (née Lobjoit)  
Mrs Gillian Edney (née Pinchbeck)  
Mrs Helen Harrington (née Clark)  
Mrs Janet Bates (née Yeo)  
Mrs Jill Cattell (née MacKenzie)  
Ms Elizabeth Tyte  
Ms Karen Ellison (née Sherwood)  
Professor Ewart Keep

### 1980

Miss Ann Cooper  
Miss Susan Bullock FRAM  
Mr Gary Pritchard  
Mr Malcolm Summers  
Mr Malcolm Walker  
Mr Philip Edwards  
Mr Simon Hall  
Mrs Deb Fisher (née King)  
Mrs Elizabeth Banister (née Charter)  
Mrs Joanna Bowley (née Biscombe)  
Mrs Julie Lambert (née Wilson)  
Mrs Karen Ponulak (née Bristow)  
Mrs Liz Rodgers (née Croom)  
Mrs Phyllis Fox (née Dobson)  
Mrs Sara Heaysman (née Nisbet)  
Mrs Sarah-Jane Docherty (née Deed)  
Ms Ceri Richards  
Ms Lynne Bailey

### 1981

Dr Mark Turner  
Miss Anthea Nembhard  
Mr Alexander Dennison  
Mr David Matthews  
Mr Graham Thomas  
Mr Stephen Clarke  
Mrs Helen Scott Taylor (née Crann)  
Mrs Jane Clark (née Smart)  
Mrs Susan Graham (née Goddard)  
Mrs Teresa Whiston (née Bishop)  
Mrs Zoe Jackson (née Moore)  
Ms Lurlyn Hudson

### 1982

Dr Andrew Pullen  
Dr Victor Olisa  
Miss Susan Ramm  
Mr Andrew Cribbin  
Mr Glyn Taylor  
Mr Paul Tyreman  
Mr Steven Lunn  
Mr Stuart Harris  
Mr Stuart Thompkins  
Mrs Gill Derrett (née Howard)  
Mrs Gillian Woodcock (née Ross)  
Mrs Jacqueline Hurden (née Clark)  
Mrs Jacqueline Cave (née Francis)  
Mrs Julia Lucas (née Fox)  
Mrs Meg Sanders (née Tombs)  
Ms Catherine Hamp  
Ms Julie Carter (née Philp)

### 1983

Dr John Lynn  
Dr Malcolm Marsh  
Mr David Johnson  
Mr John Phoenix  
Mr Maurice Gifford  
Mr Mervyn Cousins  
Mr Peter Lewis  
Mr Simon Hadlington  
Mr Sudhir Tailor  
Mrs Carolyn Parry (née Dike)  
Mrs Dorothy West (née Spencer)  
Mrs Sally Harrop (née Eaton)  
Ms Ladan Esfahani  
Ms Rosie Nixon

### 1984

Dr Penny Lewns (née Goodridge)  
Mr Alastair Gambling  
Mr Dave Heeney  
Mr Nigel Franceschi  
Mrs Alison Deansmith (née Dodd)  
Mrs Charmian Johnson (née Hearne)  
Mrs Claire Kennedy (née Mauvan)  
Mrs Valerie Benfield (née Allen)  
Ms Bettina Hughes  
Professor Robert Fraser FRSL

### 1985

Dr Adrian Warman  
Miss Elissa Swinglehurst  
Mr Alex Voice  
Mr Christopher Bates  
Mr Paul Caira  
Mrs Gill Denham (née Yarker)  
Mrs Ruth Chown (née Cooper)  
Mrs Susan McGowan (née Lawrence)  
Mrs Tracey Gardener (née Pomroy)  
Ms Alice Dallosso  
Ms Gill Earle

### Friends of the College

Cllr Geoffrey Woodger  
Dr Allan Irvine  
Dr Carol Cobb  
Dr David Hilling MBE  
Dr Fui Mee Quek  
Dr H Shevket  
Dr Julian Richardson  
Dr Kai Cheng  
Dr Kenneth Mackenzie

Dr Nita Yadava  
Dr Peter Warren CBE  
Dr Richard Killpack  
Dr Roy Waight  
Dr Steve Stevens  
Dr T Garrett  
Miss Audrey Miller  
Miss Janet Dagnall  
Miss Kathryn Griggs  
Miss Laura Merron  
Miss Sally Mellersh  
Mr Alan Durrant  
Mr Alastair Kerr  
Mr and Mrs Graham Medcalf  
Mr Andrew Perrins  
Mr Anthony Cummings  
Mr Barry Nunn  
Mr Bernard Perry  
Mr Blaise Cardozo  
Mr Bob Foster

## Royal Holloway Debating Society Debating Team Open 2013



We would like to thank Alumni Fund donors for contributing to the success of the Royal Holloway Open 2013. Your help made it possible to re-establish the Royal Holloway Debating Open as an integral part of the debating circuit. Running an Open is a time-consuming challenge and the Alumni Fund sponsorship increased our confidence in the project. As we did not have a debating competition last year, we were keen on setting up a process that would ensure continuity and establish the Royal Holloway Open as an important date in the debating calendar. Even though it was our first Open in two years, we had the pleasure of welcoming 150 debaters from all over Great Britain and due to its great success we believe that even more teams will apply for next year's Open.

The Royal Holloway Debating Society



**Mr Colin Taylor**

Mr Colin Tutt  
Mr David Haddow

**Mr David Hunter**

Mr David Plastow  
Mr David Powell  
Mr David Spence

Mr Dennis Crompton

**Mr Dennis Roberts****Mr Derek Le Helyer-Holloway**

Mr Derek Moore  
Mr Donald Clarke

**Mr Douglas Brooks**

Mr Eric Leprince-Ringuet  
Mr Frederick Tranter

**Mr Gordon Lee-Steere DL****Mr Graham Davies****Mr Henry Laprun**

Mr Henry Stephens

**Mr Howard Hughes****Mr Hugh Rees**

Mr Ian Hodgson

**Mr James Holt**

Mr James Pitman

Mr Jeffrey Duley

Mr Jerry Brownlee

Mr Jim Burrell

**Mr Joachim Funk****Mr John Follett****Mr John Kelly****Mr John Pipe**

Mr John Ruppert

Mr Keith Schrod

Mr Leonard Goldstein

Mr Les Turnbull

**Mr Martin Martinez**

Mr Martyn Tanner

**Mr Michael Smith****Mr Michael Walsh****Mr Neal Adolphus**

Mr Nicholas Marks

Mr Paul Bosonnet CBE

**Mr Paul Donnelly**

Mr Peter Hutchinson

**Mr Peter Stothart**

Mr Raymond Maw

**Mr Richard Mann**

Mr Richard Spink

**Mr Rob Fairbrother****Mr Robert Bartlett****Mr Robert Crease****Mr Robin Scott**

Mr Roger Harben

**Mr Roger Woodward**

Mr Roy Fairs

Mr Roy Heathfield

**Mr Rupert Gough****Mr Timothy West CBE****Mr Valentino Rota**

Mr William Williamson

Mr Yazan Mufti

Mrs Agatha Kalisperas

**Mrs Amita Kushal****Mrs Angela Merenda**

Mrs Berylann O'Brien

**Mrs Beverly Doyle**

Mrs Cait Kidd

Mrs Catherine Scholes

**Mrs Clare McConkey****Mrs Colette Bee****Mrs Debra Atkin**

Mrs Denise Llewellyn

Mrs Eirini Daniolou

Mrs Eliza Kwong

Mrs Erminia Giambrone

**Mrs Gillian Russell**

Mrs Hazel Perrott

**Mrs Hetty de Wit**

Mrs Jane Obin

Mrs Jean Edwards

**Mrs Jill McKenzie**

Mrs Josephine Mullen

**Mrs K E Finch**

Mrs Karen Martinez

**Mrs Karen Price****Mrs Lauren Parker****Mrs Mandy Acaster**

Mrs Margaret Bull

Mrs Margaret Spink

Mrs Marie Coveney

**Mrs Marlene Hobsbawm****Mrs Mary McElligott**

Mrs Mona Al-Khatib

Mrs Naoko Carter

Mrs Ola Oshodi-Glover

Mrs Ruth I Caleb-Landy

**Mrs S Thornton****Mrs Sally Burton-Graham**

Mrs Sarah Prosser

**Mrs Shan Turner****Mrs Sonya Perkins****Mrs Sue Heath****Mrs Sung Ahn****Mrs Susan Arthur****Mrs Susan Jones****Mrs Sylvie Milochevitch**

Mrs Ylva Parfitt

**Mrs Yvonne Peet****Ms Ceridwen Roberts**

Ms Debbie Lalor

**Ms Elaine Capizzi****Ms Marion Miliband****Ms Rona Epstein****Ms Sandra Shulman****Ms Sheila Miller****Ms Ulrike Buettner-Germaschewski****Professor David Hiley****Professor Derek Blundell****Professor Francis Robinson CBE DL****Professor Gavin Drewry****Professor Helen Gilbert****Professor John Creaser****Professor Jose Fiadeiro**

Professor Lionel Pike FRCO

**Professor Liz Valentine**

Professor Nicol Spence

Professor Pamela Jane Broadbent

**Professor Paul Layzell****Professor Sir Eric Ash**

Professor Stephen Hill

**Revd. Dr Arnold Browne****Companies****Banco Santander**

British Telecommunications PLC

City Music Society

Ernst & Young

Intel Corporation

Ministry of Education and Culture, Cyprus

**USA Scholarship Spotlight**

Meet Lani, one of this year's five recipients of the American Foundation Excellence Scholarship. Thanks to the support from our alumni and friends in the US, each student receives £3,000 toward tuition fees. All US Scholars are fulltime postgraduate students enrolled in intensive, yearlong Master's programs. Having earned a BS in Communication from the University of Central Florida, Lani came to Royal Holloway to pursue an MA in Documentary by Practice in the Department of Media Arts. During this intensive yearlong program, she will learn from award winning documentary filmmakers and high profile TV, film and cross platform commissioners. She attends classes on the College's main campus and in its London facility, 11 Bedford Square, which, as Lani excitedly notes, "is literally next door to so much art and culture." Not long before Lani left for England, her mother suffered a broken leg, putting a squeeze on the family finances. The scholarship means that Lani has a bit more breathing room to focus on her studies and to participate in the myriad student societies, like the ballet group that she attends weekly.

You can join The American Foundation for Royal Holloway and Bedford New College, Inc. (a US non-profit 501(c)(3) organisation) in supporting brilliant students like Lani. For more information, please contact [info@afrhbc.org](mailto:info@afrhbc.org).

Trustees of the American Foundation for Royal Holloway and Bedford New College:

Preston Bryant, Chair  
Sunny Bali  
Rohini Chandrabhatla  
Bruce Eshbaugh  
Ingram Losner  
Angela Slater Arnold.



# Internships open doors and minds

## The Ignition Fund

While some of the most gifted students cannot afford to take up the placement opportunities available to them, some of the most exciting young companies and inspiring not-for-profit organisations cannot afford to take advantage of the bright ideas that interns can bring. To solve both of these problems, we are launching The Ignition Fund.

We aim to build a £1 million-pot from which we will commit £50,000 each year to two important areas:

- Helping gifted but cash-strapped students to take up internships in the UK and overseas, and to launch their careers
- Covering the internship expenses of exciting small businesses (SMEs), start-ups and not-for-profits who would benefit from welcoming exceptional young graduates into their workplace

We are looking for gifts from individuals and companies who share our belief that candidates should be placed according to ability rather than family contacts or privilege.

Our ambition is for exceptional students from every department to have the life-changing, career-enhancing opportunities that internships can offer.

### Some benefits for supporters

- Access to our beautiful campus and its unique facilities for your corporate entertaining
- Access to the services available to companies via The Royal Holloway Enterprise Centre
- Access to global SMEs and start-ups, providing opportunities to network and engage with core markets
- Benefits for individuals by sponsoring students directly



If you would like to help please contact Lauren Parker on 01784 414991 or [Lauren.Parker@rhul.ac.uk](mailto:Lauren.Parker@rhul.ac.uk)

## Be like Ash

Ash Mishra (MBA International Management, 2003) co-founded Strategic Asia and is CEO of the company's European Office. His consultancy provides advice facilitation services to governments, international organisations and private businesses, and he was Special Advisor to Asia House for the London 2012 Olympic Games.

Ash has led the way with The Ignition Fund, providing us with initial funding and two internships with his company, because he benefits from having two inspiring undergraduates bringing new ideas to Strategic Asia, as well as supporting the fund for the future.





# Dates for your diary



Highlights from our programme of events for 2014. Admission is free, unless specified. Please register for all our lectures by going to [royalholloway.ac.uk](http://royalholloway.ac.uk) and clicking Events



## Midweek Music (during term time) Wednesdays 1.15-1.45pm

The Choir of Royal Holloway performs in the College Chapel. Programme details can be found on the Choir's website: [chapelchoir.co.uk](http://chapelchoir.co.uk)

## Alumni Sports Day Saturday 11 January 2014

Our annual competition between students and alumni in a wide variety of sports. Come and cheer on the alumni as they try to regain the Hancock Cup.

Tickets £10. For more information email [sports@rhbc.ac.uk](mailto:sports@rhbc.ac.uk)

## Dabis Lecture Tuesday 11 February 2014

*On Translating Aristotle's Ethics* by Professor Sir Anthony Kenny, University of Oxford

Picture Gallery, 6.15pm

## Special Interest Lecture Thursday 13 February 2014

*Thomas Holloway's College – The First 125 Years* by Richard Williams

Windsor Building Auditorium, 6.15pm

## Stevenson Science Lecture Monday 17 February 2014

*The Birth of Machine Cryptanalysis at Bletchley Park* by Dr Joel Greenberg, Bletchley Park Trust

Windsor Building Auditorium, 6.15pm

## Sarah Fox Recital Friday 21 February 2014

A soprano of international standing, alumna Sarah Fox took part in the Three Sopranos Concerts in 2010 and 2012, and returns with a programme of well-loved favourites.

Windsor Building Auditorium, 7pm

Tickets £25 (£5 Royal Holloway students), to book phone the Events Office on: **01784 443004**.

## Royal Holloway Science Festival 24 February-1 March 2014

Take part in hands-on activities, demos, talks, live experiments and more in our popular celebration of science. Activities for all ages.

For more information email: [lucy.yeomans@rhbc.ac.uk](mailto:lucy.yeomans@rhbc.ac.uk)

## Hayes-Robinson Lecture Tuesday 4 March 2014

*Martin Luther, Aggression and Masculinity* by Professor Lyndal Roper, University of Oxford

Windsor Building Auditorium, 6.15pm

## Hellenic Lecture Tuesday 11 March 2014

*The Substance and the Shadows: Reflections on British-Greek Relations over two Centuries* by Sir Michael Llewellyn-Smith KCVO, CMG, former British Ambassador to Greece

Windsor Building Auditorium, 6.15pm

## STARS Gala Dinner Tuesday 18 March 2014

Our celebrity sports dinner. Tickets are £65 or £585 for a table of ten, including 10% discount. For details and to register your interest, email [alumni@rhbc.ac.uk](mailto:alumni@rhbc.ac.uk)

## New York Alumni Dinner April 2014

Join us for our second annual dinner for friends and alumni in the US. For details and to register your interest email [alumni@rhbc.ac.uk](mailto:alumni@rhbc.ac.uk)

## Singapore Alumni Dinner May 2014

Our annual dinner for alumni in Singapore. To register your interest and be sent future details of the date and venue email [alumni@rhbc.ac.uk](mailto:alumni@rhbc.ac.uk)

## College Garden Party & Alumni Tea Sunday 8 June 2014

South Quad, Founder's Building, 1-5.30pm

Admission to the Garden Party is £1. Ticket details for the Alumni Tea in Founder's Dining Hall will be advertised on our website: [royalholloway.ac.uk/alumni](http://royalholloway.ac.uk/alumni)

## Magna Carta Lecture Tuesday 17 June 2014

Windsor Building Auditorium, 6.15pm

*Magna Carta in British History: Memory, Inventions and Forgetting* by Professor Linda Colley CBE, Princeton University

## Summer Reception June 2014

We will be inviting all our donors to an evening drinks reception with canapés in the Picture Gallery, to thank them for their on-going support and to explain how that support has impacted the College.

## Hong Kong Alumni Dinner November 2014

Join us for our annual dinner for alumni in Hong Kong. To register your interest and be sent future details of the date and venue email [alumni@rhbc.ac.uk](mailto:alumni@rhbc.ac.uk)



## MBA Christmas Lunch December 2014

Join us for our annual lunch for MBA alumni and students. To register your interest and be sent future details of the date and venue email [alumni@rhbc.ac.uk](mailto:alumni@rhbc.ac.uk)

# Postgraduate Open Evening

Interested in returning to study at Royal Holloway?

Come along to our Postgraduate Open Evening on 21 January 2014. The evening will give you the opportunity to:

- learn more about our Postgraduate taught programmes for 2014 entry
- gain Information on scholarship and funding opportunities
- meet with current students, course directors and admissions staff
- tour our beautiful parkland campus – it may have changed a bit since you were here
- enjoy some refreshments

## Alumni bursaries

Bursaries are automatically given in the first year to all alumni of Royal Holloway and Bedford New College.

£500 for UK/EU students £750 for overseas students



**Picture Gallery,  
Royal Holloway, Egham, Surrey**



**4.00 – 7.00pm  
Tuesday 21 January 2014**



**Book your place at:  
[www.rhbnc.ac.uk/openevening](http://www.rhbnc.ac.uk/openevening)**



# Curious about what the future holds for the College?

## You can be a part of it by planning a gift in your Will.

Planning a gift in your Will to Royal Holloway and Bedford New College offers you the opportunity to invest in the future and to take part in the life of the College for years to come. Plus, giving in this way enables you to merge your financial planning and charitable giving aspirations.

Your gift has the potential to provide the College with the flexibility to support new projects and initiatives that will help us continue to strengthen our standing as a top research university, maintain the splendour and heritage of our campus, and enhance our students' university experience.

When the time is right for you, I am here to help. I look forward to hearing from you.

With thanks,

Sarah Nikkel

Major Gifts and Legacies Manager

[sarah.nikkel@rhbnc.ac.uk](mailto:sarah.nikkel@rhbnc.ac.uk)

+44 (0)1784 276611

